

The Brandywine Valley

Experience Chateau Country



Longwood Gardens

Tour the original homes of the du Pont descendants which are now museums and gardens.



Hagley Museum and Library



Winterthur, An American Estate

THE INN AT MONTCHANIN VILLAGE

has been recognized by The Pennsylvania Horticultural Society for its outstanding public plantings and for improving life through horticulture.



Tony Mottola, Horticulturist at The Inn at Montchanin Village

Experience the gentle comfort and beauty of a restored 19th Century hamlet. The 28 guest rooms and suites are situated in 11 restored buildings among landscaped gardens and pathways. This historic village was once part of The Winterthur Estate. Also located at The Inn is Delaware's award winning restaurant, Crazy Kat's.

For information about our Chateau Packages call us at 1-800-269-2473 or visit www.montchanin.com

Wilmington, Delaware



The Heart of The Brandywine Valley



CHESTER COUNTY

Brandywine Valley & Beyond

OFFICIAL VISITORS GUIDE

FALL & WINTER 2006



Longwood Gardens
QVC Studio Tours
Wineries
7,000 Hotel and B&B Rooms



sleep in



things to do

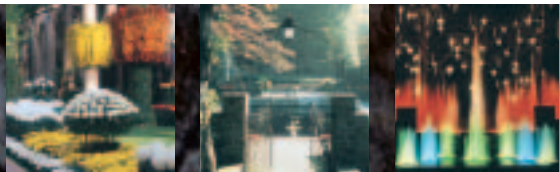


eat out



retail therapy

Discover



Mendenhall Hotel
Rt. 52, Mendenhall, PA 19357
For reservations call 610-388-2100
www.mendenhallinn.com



Concordville Hotel

Best Western Concordville Hotel
Rt. 322 & Rt. 1, Concordville, PA 19331
For reservations call 610-358-9400
www.concordville.com



Holiday Inn Express Hotel & Suites of the Brandywine Valley
Rt. 1 & Rt. 202, Concordville, PA 19331
For reservations call 610-358-1700
www.concordville.hiexpress.com

BRANDYWINE SAMPLER I

Deluxe Accommodations for One night, Breakfast*, Godiva chocolates, Admission for two to the following attractions:

- Winterthur Museum** \$120.00*
- Chadds Ford Winery & Brandywine River Museum** \$128.00*
- Winterthur Museum & Brandywine River Museum** \$135.00*
- Longwood Gardens** \$135.00*
- Longwood Gardens & Winterthur Museum** \$145.00*

BRANDYWINE SAMPLER II

Deluxe Accommodations for One night, Breakfast*, Godiva chocolates, Admission for two to Winterthur Museum, Brandywine River Museum, Hagley Museum, Longwood Gardens and discounts on other attractions.

\$169.00*

BRANDYWINE SAMPLER III

Deluxe Accommodations for Two nights, Breakfast*, Godiva chocolates, Admission for two to Winterthur Museum, Brandywine River Museum, Hagley Museum, Longwood Gardens and discounts on other attractions.

\$269.00*

BREAKFAST
Mendenhall/Concordville Hotel
Full Hot Breakfast Buffet
Holiday Inn Express Hotel & Suites
Deluxe Continental Breakfast.

SPECIAL DISCOUNTS
Jan 1st - March 31st 15% off Mon-Sat
April 1st - June 30th 10% off Mon-Thur
July 1st - Sept 10th 15% off Mon-Thurs
10% off Fri-Sat
Sept 11th - Oct 31st 10% off Mon-Thur
Nov 1st - Dec 30th 10% off Mon-Thur
15% off Fri-Sat
Sunday Special
15% off Every Sunday

Above not valid with any other discounts, promotions, Valentines Day weekend, etc., New Years Eve, and discounts apply to Deluxe Accommodations only, no upgraded room type.

*All hotels are minutes from the above attractions. Call for reservations today! *Rates subject to change*



welcome to Chester County

Dear Visitor,

Chester County invites you to explore its area attractions, museums, historic districts, wineries and more. Choose from one of our many hotels or B&Bs, and stay overnight in the countryside. Under an hour from Philadelphia, "Dutch" Country and the State of Delaware, we invite you to spend a long weekend here, extend your business trip or use it as a central location to experience the entire *Brandywine Valley and Beyond*.

The Brandywine Valley is home to **Longwood Gardens**, celebrating its Centennial in 2006, the **QVC Studio Tour**, the **Brandywine River Museum**, **Winterthur** and **Valley Forge National Historic Park**.

There are over 7,000 hotel and B&B rooms offering accommodations for all types of budgets. We hope you stay overnight and lengthen your visit, seeing as much as you can of what the area has to offer. Dine in one of our many restaurants (try the local mushrooms!), and taste the authentic flavors dished-up daily. Indulge in a glass of regionally grown Chester County wine, visit one of our wineries, or stop at one of the local breweries for a hand-crafted beer.

In between visiting the local attractions, tasting the wineries and eating at our restaurants, don't forget to shop Chester County. Stop at one of our premium malls, like **Exton Square** or the **King of Prussia Mall**, or see what's inside one of our antique, gift and boutique shops.

Charming communities like West Chester, Kennett Square and Phoenixville look forward to welcoming you to Chester County, *The Brandywine Valley and Beyond*.

Enjoy!



Donald A. Mancini
Donald A. Mancini
Chairman,
Chester County Board
of Commissioners



Carol Aichele
Carol Aichele
Commissioner



Andrew E. Dinniman
Andrew E. Dinniman
Commissioner



Jesse Walters
Jesse Walters
President,
Chester County Conference
& Visitors Bureau



Dawn Dowling
Dawn Dowling
Chair,
Chester County Conference
& Visitors Bureau

STATE SENATORS

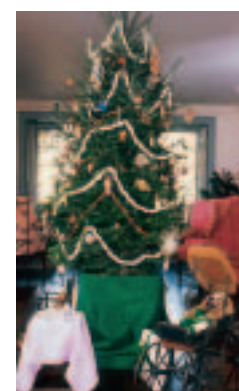
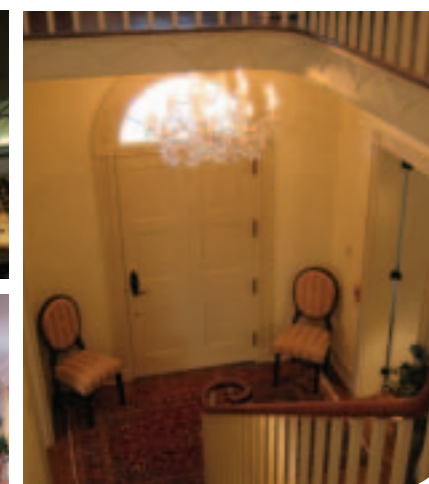
- David Brightbill
- Edwin Erickson
- Dominic Pileggi
- John Rafferty Jr.
- Robert Thompson
- Noah Wenger

STATE REPRESENTATIVES

- Stephen Barrar
- Robert Flick
- Tim Hennessey
- Arthur Hershey
- Tom Killion
- Chris Ross
- Carole Rubley
- Curt Schroder
- Elinor Taylor

CONTENTS

FALL & WINTER 2006



so much to see & do In the Brandywine Valley

One option could be to spend your day visiting Longwood Gardens, seeing the paintings inside the Brandywine River Museum and having lunch at Simon Pearce and watching their in-house glass blowing (also offered for sale in their gift shop) . After a relaxing lunch, you could head into the historic district of Kennett Square or West Chester and enjoy a rich, small-town atmosphere offering shops galore. Not only are there many sights to see in the boroughs of Kennett or West Chester, but there are many restaurants to choose from. Enjoy dinner at the State Street Grill or the Kennett Steak and Mushroom restaurant in Kennett Square or the Iron Hill Brewery or Baxter's in West Chester.

Another day could be spent at QVC taking the QVC Studio Tour, afterwards visiting The American Helicopter Museum. Minutes from Exton Square or King of Prussia Mall, you can stop in between and have lunch at the Ship Inn, Vickers Tavern or the White Horse at the Sheraton Great Valley. An evening could follow in the historic district of Phoenixville with a movie at the Colonial Theatre or dinner theatre at Lily Langtry's in the Radisson Valley Forge.

Strolling through Winterthur and its mansion, seeing the Delaware Art Museum and having lunch at Buckley's Tavern and dinner at the Green Room in the Hotel DuPont are other Brandywine Valley treasures that can't be missed.

It is our natural beauty as well as the hospitality, culture and arts of the area that bring people back again for a memorable overnight visit.



**CHESTER COUNTY
CONFERENCE AND VISITORS BUREAU**
17 Wilmont Mews, Suite 400
West Chester, Pennsylvania 19380
Phone (610) 280-6145 Fax (610) 280-6179

(800) 228-9933

Jesse Walters, President
Greg Edevane, Director of Sales & Marketing
Matt DiFilippo, Director of Communications
Jan Reeps, Director of Membership/
Visitors Center Director
Catherine Sassa, Administrative Assistant/Receptionist
David Edevane, Administrative Assistant/Mail Fulfillment
Mike Doyle, Bookkeeper
Nina Kelly, Housing Bureau Director
Brenda Keller, Brandywine Valley Program

Information on Chester County and the Brandywine Valley is available 24 hours a day.

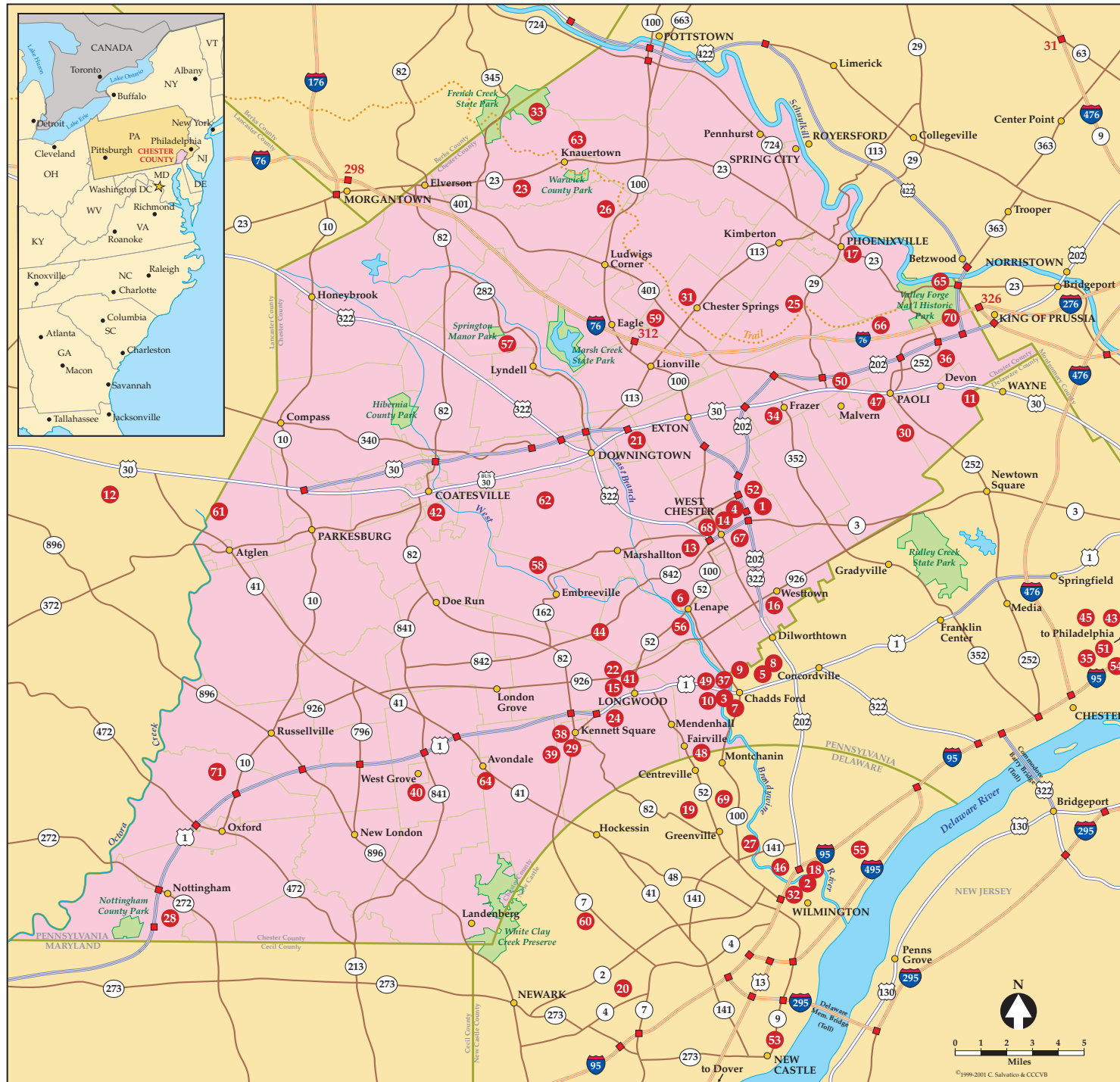
Our Internet address is:
www.brandywinevalley.com



bird's eye view	4
things to do	6
history and culture start here...	14
...and continues here	17
more to do	20
sleep in	26
eat out	37
retail therapy	43
just in case	46

bird's eye view

index of attractions



- | | | |
|--|--|---|
| 1 American Helicopter Museum | 31 Historic Yellow Springs | 61 Twin Brook Winery |
| 2 Bank One Center on the Riverfront | 32 Historical Society of Delaware | 62 United Sports Training Center |
| 3 Barns-Brinton House | 33 Hopewell Furnace | 63 U.S. Hot Air Balloons |
| 4 Brandywine Ballet | 34 Immaculata University | 64 Va La — Family Farmed Wines |
| 5 Brandywine Battlefield | 35 Independence Visitors Center | 65 Valley Forge National Historical Park |
| 6 Brandywine Picnic Park | 36 Jenkins Arboretum | 66 Wharton Esherick Studio |
| 7 Brandywine River Museum | 37 John Chad's House | 67 West Chester University |
| 8 Brinton 1704 House | 38 Kennett Symphony Orchestra | 68 West Chester Railroad |
| 9 Chadds Ford Historical Society | 39 Kennett Underground Railroad Center | 69 Winterthur, An American Country Estate |
| 10 Chaddsford Winery | 40 Kreutz Creek Vineyard | 70 World of Scouting Museum |
| 11 Chanticleer Gardens | 41 Longwood Gardens | 71 Wyncote Golf Club |
| 12 Cherry Crest Farm Amazing Maize | 42 Lukens National Historic District | |
| 13 Chester County Art Association | 43 Mann Center for Performing Arts | |
| 14 Chester County Historical Society | 44 Marlborough Valley Corn Maize | |
| 15 Chester County Visitors Center | 45 National Constitution Center | |
| 16 Cheyney University | 46 Nemours Mansion & Garden | |
| 17 Colonial Theatre | 47 Paoli Battlefield | |
| 18 Delaware Art Museum | 48 Paradox Vineyards Tasting Room | |
| 19 Delaware Museum of Nat. History | 49 Pennsbury-Chadds Ford Antique Mall | |
| 20 Delaware Park | 50 People's Light & Theatre | |
| 21 Downingtown Country Club | 51 Philadelphia Museum of Art | |
| 22 Folly Hill Vineyards | 52 QVC Studio Park | |
| 23 French Creek Ridge Vineyard | 53 Read House | |
| 24 Gateway Stables | 54 Ride the Ducks | |
| 25 Great Valley Nature Center | 55 Rockwood Museum | |
| 26 Green Valleys Association, Welkinweir | 56 Simon Pearce | |
| 27 Hagley Museum | 57 Springton Manor Farm | |
| 28 Herr's Snack Factory Tour | 58 Stargazers Winery | |
| 29 Historic Kennett Square | 59 The Mill at Anselma | |
| 30 Historic Waynesborough | 60 Three Little Bakers | |

MILEAGE chart

Atlantic City	95
Baltimore	90
Boston	330
Cleveland	400
Harrisburg	80
Lancaster	45
New York	115
Philadelphia	35
Pittsburgh	285
Richmond	235
Washington, D.C.	120

Chester County Visitors Center

Make your first stop the Chester County Visitors Center, built circa 1865, located in front of the entrance to Longwood Gardens off US 1. Personal assistance waits to help you with lodging reservations and information on places to see and restaurants at which to dine. Find out about current events or off-the-beaten path shops. See the free exhibit inside, which documents the Visitors Center involvement in the Underground Railroad. Don't forget to pick-up free literature on hundreds of area businesses.



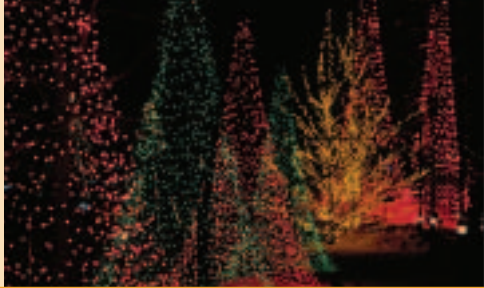
Chester County is accessible by air, train or car. All major airlines fly into Philadelphia International Airport, and taxi, limousine or shuttle service is available. Amtrak provides service to 30th Street Station in Philadelphia and Wilmington, DE. SEPTA is the regional local carrier providing bus routes into West Chester and around Philadelphia. The Brandywine Valley is easily accessible by car via major routes I-95, I-76, I-276, the Pennsylvania and New Jersey Turnpikes, US Routes 30, 202 and 322.

Chester County, Pennsylvania

CHESTER COUNTY CONFERENCE AND VISITORS BUREAU
 17 Wilmont Mews, Suite 400
 West Chester, Pennsylvania 19380
 Phone (610) 280-6145 Fax (610) 280-6179

CHESTER COUNTY VISITORS CENTER
 Route One near Longwood Gardens
 Kennett Square, Pennsylvania 19348
 (800) 228-9933
 Phone (610) 388-2900 Fax (610) 388-6241

things to do



Consider fall and winter activities in planning your getaway to Chester County. **Longwood Gardens**, the **Brandywine River Museum**, **Winterthur** and most other area attractions offer special events during the holiday season. The **QVC Studio Tour** is good any time of the year as are other indoor attractions in the area like the **Delaware Art Museum**. Dinner theatre, other cultural, indoor exhibits and holiday house tours are just a few of the things to do during the fall and winter months in Chester County.

BALLOONING

US Hot Air Balloon Team

A once-in-a-lifetime experience. Relax; enjoy the exhilaration of floating effortlessly over the upper reaches of the Brandywine River valley. AM/PM rides available. Call (800) 763-5987 to reserve your flight. MC,V,AX,D. www.ushotairballoon.com.

BOATING

Adventure Crafters

609 Price St., West Chester, PA 19382 (610) 692-2146; Fax: (610) 436-5597; www.adventurecrafters.com E-mail: rscschack@adventurecrafters.com. A unique adventure travel company based in West Chester, PA, we provide safe access to water and mountain sports through planning, education and our enthusiasm for outdoor adventure.

Brandywine Outfitters, Inc.

2096 Strasburg Rd., Mortonville, PA 19320 (610) 486-6141 or (800) CANOES8 Fax: (610) 486-1068; www.canoepa.com E-mail: info@canoepa.com. Campground for groups; kayak/canoe rentals, company parties, still water rentals and special occasion events for up to 160 people.

Northbrook Canoe Co.

1810 Beagle Rd., West Chester, PA 19382 (610) 793-2279. Canoes, kayaks, tubing, splash boats; open April-Oct from 9 am, 7 days/wk. Advance reservations for all trips necessary. Call ahead and let us help you plan a wonderful day on the Brandywine.

Marsh Creek State Park

Dept. of Conservation and Natural Resources Bureau of State Parks 675 Park Rd., Downingtown, PA 19335 (610) 458-5119

CHURCHES

Temenos

1564 Telegraph Rd., West Chester, PA 19382 (610) 696-8145. A service of the Swedenborgian Church, which teaches that Divine Presence and Power may be found in all world faiths. Services held in "The Farm House" Sundays 10:30 am by Rev. Susannah Currie.

DINNER THEATRES

Lily Langtry's Restaurant & Showplace

Radisson Valley Forge Hotel, 1160 First Ave., King of Prussia, PA 19406. (877) 783-LILY; Fax: (610) 768-0183 www.lilylangtrys.com; E-mail: info@lilylangtrys.com Lily Langtry's Dinner Theater offers fresh Las Vegas style shows, viewed in a spectacular Victorian setting. Enjoy a delicious four-course meal before the show.

Three Little Bakers Dinner Theatre

3540 Three Little Bakers Blvd., Wilmington, DE 19808 (800) 368-3303 or (302) 368-1616; Fax: (302) 452-2535 www.tlbinc.com. Spectacular Broadway musicals and celebrity events at affordable prices for everyone to enjoy. Family hospitality in a 980-seat theatre with spacious tiered seating, sumptuous buffet style dinners and delicious desserts.

ENTERTAINMENT/CULTURAL

Andre Harvey Studio

Breck's Mill, 101 Stone Block Row, Top Floor, Greenville, DE (302) 656-7955; Fax: (302) 656-7974; www.andreharvey.com E-mail: info@andreharvey.com. Andre Harvey's work is displayed in the historic 1814 Breck's Mill, downstream from Hagley Museum, overlooking beautiful waterfalls; Over 40 bronzes and 18K gold jewelry. Represented in national and international collections.

Background Music, Inc.

26 Skyview Ln., Thorndale, PA 19372-1136 (610) 466-7938; Fax: (610) 466-7938 Background music as you like it: small groups for your nicer parties.

Bank One Center on the Riverfront

800 S. Madison St., Wilmington, DE 19801. (888) 862-ARTS Fax: (302) 425-4897; www.riverfrontwilmington.com E-mail: info@riverfrontwilmington.com. Conveniently located on the I-95 corridor, this grand and spacious facility houses traveling art and historical exhibitions.

Brandywine Ballet Company

317 Westtown Rd., Suite 5, West Chester, PA 19382 (610) 692-6402; Fax: (610) 696-0975 www.brandywineballet.com; E-mail: info@brandywineballet.com An extraordinary company performing throughout the county, the Brandywine Ballet presents a mix of classical and contemporary ballets including an annual production of The Nutcracker at West Chester University.

The Brandywine Singers

105 Hampshire Ct., West Chester, PA 19380 (610) 470-0870; E-mail: bhchoraldept@comcast.net West Chester's exciting 30 member vocal ensemble, founded in 1993, presents annual winter and spring concerts throughout the region, featuring the finest choral masterworks of every era.

Cecil County Tourism

One Seahawk Dr., Suite 114, North East, MD 21901 (800) CECIL-95; (410) 996-6292; Fax: (410) 996-6279 www.seececil.org; E-mail: sturner@ccgov.org. Welcome home to Cecil County, "a short drive to lasting memories," offering a beautiful landscape of rolling hills, equestrian countryside, waterfront towns, antiques/collectibles, along with incredible restaurants and inns.



Chester County Concert Band

403 Cumbrian Ct., West Chester, PA 19382
(610) 344-7213; Fax: (302) 885-8657; www.cccb.org
E-mail: clarinetcdw@comcast.net. A 23-year-old community band of over 70 musicians from the area. Presents concerts throughout the year. Repertoire includes light classics, marches, big band, and show tunes. New members welcome.

Chester County Day

C/o The Chester County Hospital, 701 East Marshall St., West Chester, PA 19380. (610) 431-5301; Fax: (610) 738-2830
www.cchosp.com. Tour of historic and interesting homes, gardens and landmarks in Chester County. Always the first Saturday in October! Organized by the Women's Auxiliary to benefit The Chester County Hospital.

Chester Springs Studio

1690 Yellow Springs Rd., Chester Springs, PA 19425
(610) 827-9999; www.chesterspringsstudio.org
Chester Springs Studio is a vibrant visual arts center serving our community through exceptional exhibitions, courses, workshops, summer camps and artist residencies at sites in Yellow Springs and Coatesville.

Coatesville Area Arts Alliance, Inc.

120 Reservoir Rd., Coatesville, PA 19320
(610) 384-2535; Fax: (610) 384-2535 (call first)
www.CthreeA.org; E-mail: CthreeA@brandywine.net
Promotes the Arts and the Artists by staging one-of-a-kind events in Chester County and beyond. We make Art a Happening! Check our exciting web site to see how.

Coatesville Christmas Parade, Inc.

PO Box 1166, Coatesville, PA 19320
(610) 384-2677. The Annual Coatesville Christmas Parade will be held the first Saturday in December. Six string bands, high school bands, floats, cartoon characters, marching units; Largest parade in the county.

Colonial Theatre

227 Bridge St., Phoenixville, PA 19460
(610) 917-1228; www.thecolonialtheatre.com
E-mail: thecolonialtheatre@yahoo.com. Owned/operated by the Association as a non-profit corporation showcasing art/independent film in historic 1903 Vaudeville House. Open every evening for film/music; Sat and Sun classics, special children's programs.

Delaware Park Racetrack & Slots

777 Delaware Park Blvd., Wilmington, DE 19804
(800) 41-SLOTS (85687); (302) 994-2521; Fax: (302) 355-1292
www.delpark.com. Hot Slots! Swift Horses! Championship Golf! Fast Action! Live thoroughbred racing April thru Nov; picnic grove, playground; simulcasting year-round, restaurants, White Clay Creek Clubhouse, 18-hole golf course; FREE parking, FREE Admission.

General George Washington

102 Spinnaker Ln., Kennett Square, PA 19348
(610) 444-4637; www.gwashington.net. Inspirational speaker and entertainer who brings to life the real George Washington relating his thoughts and experiences that made him "the indispensable man" and "the father of his country."

Great Valley Nature Center

Rte. 29 & Hollow Rd., PO Box 82, Devault, PA 19432
(610) 935-9777; Fax: (610) 935-0130; www.gvnc.org
E-mail: gvncee@nni.com. Providing environmental education and outdoor recreation programs for schoolchildren (pre-school-grade 12) and the general public of the Greater Philadelphia region.

Greystone Hall

West Chester, PA 19380. (610) 696-1272; Fax: (610) 696-0949
www.greystonehall.com. Banquets, receptions, meetings; A stately mansion on a 450-acre country estate offering an elegant alternative setting for meetings and corporate entertainment; special tours.

Historic Sugartown

697 Sugartown Rd., Malvern, PA 19355. (610) 640-2667
Fax: (610) 725-1745; E-mail: jnagy@accessible.com. Historic Sugartown is a restored crossroads village dating from the late 18th century providing an exceptional example of a self-sufficient community in the late 18th and early 19th centuries.

Independence Visitor Center

1 N. Independence Mall West, 6th & Market Sts., Philadelphia, PA 19106. (800) 537-7676; (215) 925-6101
Fax: (215) 925-6106; www.independencevisitorcenter.com
E-mail: Kries@independencevisitorcenter.com. Located in America's most historic square mile, info on over 4,000 local attractions, FREE maps, directions, concierge service, tickets to local attractions, convenient underground parking, public restrooms, gift shop and cafe.

Herr's Snack Factory Tour

20 Herr Dr., Nottingham, PA 19362. (800) 63-SNACK
www.herrs.com; E-mail: Jennifer.Arrigo@herrs.com. Free, guided tour of the snack factory, warm potato chip samples provided. Herr's Gift Shop and Chipper's Cafe are located in the Visitor Center—reservations suggested, handicapped/stroller accessible.

Holland Art House

113 W. Market St., West Chester, PA 19382. (610) 701-9330
www.HollandArtHouse.com. Large European style gallery; striking/colorful Contemporary Art by Dutch 21st Century Masters; Oils/Acrylics (up to 14'x7'); Works on Paper, Sculpture, Serigraphs, Photographs and Industrial Design objects. Tue-Thur: 1-5, Fri-Sat: 1-8.

Kennett Amateur Theatrical Society, Inc.

PO Box 673, Kennett Square, PA 19348. (610) 444-3129
www.callkats.com. KATS Presents "The Priare," a play by Rea Redifer at Anson B. Nixon Park in Kennett Square. For info visit www.callkats.org.

Kennett Symphony of Chester County

105 S. Broad St., PO Box 72, Kennett Square, PA 19348
(610) 444-6363; Fax: (610) 925-1599; www.symphony.kennett.org
E-mail: info@kennettsymphony.org. Celebrating our 65th Season with concerts in West Chester, historic Kennett Square and beautiful Longwood Gardens. See you at the Symphony!

The Mann Center for the Performing Arts

123 S. Broad St., Suite 1930, Philadelphia, PA 19109
(215) 546-7900 ext 125; Fax: (215) 546-9524; www.manncenter.org
E-mail: jgriesemer@manncenter.org. The region's premier outdoor cultural arts venue features pops, jazz, family, orchestral series and musical theater. On-site pre-concert dining is available and internationally inspired concessions provided by Frog Commissary Catering.

The Mushroom Festival, Inc.

PO Box 1000, Kennett Square, PA 19348; (610) 925-3373
www.mushroomfestival.org; E Mail: info@mushroomfest.com
Sept. 10th and 11th, Fun, Food & Fungi; Help taste and judge the Soup Cook-off, attend cooking or growing demos, mushroom judging, art show, car show, street festival with entertainment or the farm tours.

Pennsylvania Ballet

1101 S. Broad St., Philadelphia, PA 19147. (215) 551-7000
Fax: (215) 551-7224; www.paballet.org. One of the nation's leading ballet companies, performs five productions each season that include classic favorites and new works, as well as the Philadelphia holiday tradition, "The Nutcracker."

People's Light and Theatre Company

39 Conestoga Rd., Malvern, PA 19355
(610) 644-3500; www.peopleslight.org. One of America's premier regional theatres, People's Light brings together theatre artists of the highest caliber with large and diverse audiences to celebrate an increasingly complex world.

Pottstown Symphony Orchestra

PO Box 675, Pottstown, PA 19464. (610) 32-MUSIC
www.pottstownsymphony.org. A fully professional symphonic orchestra serving Northern Chester County performing classical, holiday and pop concerts throughout the region. We have exciting concerts and special events planned. Great music, closer to home!

QVC Studio Tour

1200 Wilson Dr., West Chester, PA 19380
(800) 600-9900; Fax: (610) 701-1423; www.qvctours.com
Broadcasting live 24 hrs/day. A guided walking tour is an informative look inside the world's largest electronic retailer. Watch Live TV in action! Tours are every hour every day 10 am-4 pm.

Ride the Ducks

Corner of 6th & Chestnut Sts., Philadelphia, PA 19106
(215) 227-DUCK (3825); www.phillyducks.com
E-mail: dmeglino@phillyducks.com
Philadelphia's ORIGINAL Duck Tour, is an amphibious sight-seeing tour, which takes you through the heart of Philadelphia's historic district, down South St., then to Penn's Landing for a Cruise on the Delaware River. 7 days/week, mid-March/Nov.

Riverfront Wilmington

Located along Interstate 95, just 30 minutes from Philadelphia.
(877) 92-RIVER; www.riverfrontwilmington.com. Unique entertainment destination where you'll enjoy restaurants, shops, sports, cultural attractions as you stroll along the Riverfront. Learn about the history of the Christina River on a water taxi tour.

Schuylkill River Heritage Area

140 College Dr., Pottstown, PA 19464
(484) 945-0200; Fax: (484) 945-0204; www.schuylkillriver.org
E-mail: info@schuylkillriver.org. Manages National and State Heritage Area programs that build partnerships to revitalize the Schuylkill River Valley's communities and restore its natural resources. Sponsors the annual Schuylkill River Sojourn.

TurtleDove Folk Club.

PO Box 701, Unionville, PA 19375; 800-Turtled
Fax: (610) 869-4403; www.turtledove.org
E-mail: folkbloke@hotmail.com. Founded in 1996, TurtleDove Folk Club presents 12-15 events per year featuring blues, bluegrass, folk, Celtic and world music.



Sister County—Cheshire County, England



In 1980 the Cheshire Youth Band from Cheshire County, England, came to Chester County to perform. The idea of having a continuing cultural exchange between the two counties was born, and an official "Sister County" relationship was formed. Over the years the relationship has matured through sharing economic, educational and tourism ideas. Within the past year, representatives from Cheshire County toured Chester County visiting with area government, tourism and attraction representatives.

One of the striking similarities between the two counties is the capital city of Cheshire, Chester, was the name that William Penn originally used to name our county. Other similarities are:

Similarity	Chester County, PA	Cheshire County, England
Population	433,501	681,000
Anchor Attraction	Longwood Gardens	Tatton Park and Garden
Lodging	Both have roughly 7,000 hotel or B&B rooms to choose from	
Demographics	Both counties enjoy more affluent households than other parts of their respective regions	
Environment	Both counties are dedicated to the preservation of open space, warm hospitality and an authentic local culture	
Education	Both counties offer a choice of universities such as West Chester University in Chester County and the City of Chester College in Cheshire	
On the Web	Brandywinevalley.com	VisitChester.com

Unionville Community Fair, Inc.

PO Box 298, (Rte. 82 on the Unionville High School Grounds) Unionville, PA 19375-0298. (610) 347-1726
www.unionvillecommunityfair.org
E-mail: Dianne@therryaffiliates.com. This fair has plenty for the family to enjoy, from Fair Queen contest, parade, petting zoo, cattle, llama and horse shows to hayrides, gardening seminars and baking contests. Oct 6,7,8.

Greater Wilmington Convention & Visitors Bureau

100 West 10th St., Suite 20, Wilmington, DE 19801-1661
(302) 652-4088

ENTERTAINMENT/SPORTS

Ice Line

700 Lawrence Dr., West Chester, PA 19087. (610) 436-9670
Fax: (610) 436-4622; www.iceline.info; E-mail: cbang@iceline.info
Ice Line quad-rink facility provides ice skating and hockey entertainment. We host public skate, games, tournaments and parties. We house an arcade, gym, pro-shop and restaurant. Fun for the whole family!

United Sports Training Center

1426 Marshallton-Thorndale Rd., Downingtown, PA 19335
(610) 466-7100; Fax (610) 466-9314; www.G02USTC.com
Most comprehensive multi-sports facility on the East coast, USTC services a multitude of sports for instruction, leagues, camps, clinics and tournaments. Professional enrichment programs offered for companies/organizations encouraging leadership/teamwork.

EQUESTRIAN

Devon Horse Show & Country Fair

PO Box 865, Devon, PA 19333. (610) 964-0550
Fax: (610) 964-1608; www.thedevonhorseshow.com
E-mail: dhs@fast.net. Drawing spectators from around the world, this is a ten-day horse and carriage show with a country fair atmosphere reflecting local traditions/lifestyles of the Philadelphia Main Line. May 26–June 2, 2006.

Gateway Stables, Inc.

949 Merrybell Ln., Kennett Square, PA 19348
(610) 444-1255; Fax: (610) 444-7588; www.gatewaystables.com
E-mail: moreinfo@gatwaystables.com. Trail rides for all ages, camps, lessons, boarding, Girl/Boy Scout clinics, family rides, corporate outings. Reservations requested. A portion of all proceeds goes to The Juvenile Diabetes Research Foundation.

The Laurels at Landhope International Autumn Celebration

Glen Willow & Woodview Rds., West Grove, PA
(610) 486-0710; Fax: (610) 486-6814; www.laurelscde.com
E-mail: Laurelslandhope@aol.com. Laurels at Landhope International delivers a weekend of diverse fun filled family entertainment, International carriage Driving, Dog Agility, Boutique Shopping, Dixieland Jazz, outstanding food, in country setting. Sept 9,10,11, 2005.

Ryerss Farm for Aged Equines

1710 Ridge Rd., Pottstown, PA 19465. (866) 469-0507
(610) 469-0533; Fax: (610) 469-0537; www.ryerss.com
E-mail: ryerss@aol.com. Ryerss Farm, founded in 1888, houses 100+ aged and abused horses is an excellent day trip for families, school groups, senior centers, etc. Call for more information and hours.

GOLF

Downingtown Country Club

85 Country Club Dr., Downingtown, PA 19335
(610) 269-2000; Fax: (610) 269-2004; www.golfdowntown.com
E-mail: proshop@golfdowntown.com. Nestled in the rolling hills of Chester County, this George Fazio designed championship golf course features tree-lined fairways; firm, fast greens protected by deep bunkers, heavy roughs; Bar/Grill in clubhouse.

Hartefeld National Golf Club

One Hartefeld Dr., Avondale, PA 19311.
(610) 268-8800; Fax: (610) 268-7425; www.hartefeld.com
E-mail: info@hartefeld.com. Designed by Tom Fazio, this par 72 championship, daily-fee course winds through rolling hills of Southern Chester County. Full-service facility offers golf packages for groups from 16–200.

Three Little Bakers Country Club

3542 Three Little Bakers Blvd., Wilmington, DE 19808
(302) 737-1877; Fax: (302) 737-5745; www.tlbinc.com. Superbly conditioned Edmund Ault design traverses rolling terrain along Pike Creek; features bent grass tees, fairways with large undulating greens; four sets of tees, tight, demanding, challenging all skill levels.

Wyncote Golf Club

50 Wyncote Dr., Oxford, PA 19363
(610) 932-8900; Fax: (610) 932-8197; www.wyncote.com
E-mail: wyncote@wyncote.com. Award-winning Scottish golf course with full service range, pro-shop and clubhouse. Highest rating in Zagot's Golf Survey 2003; Multiple tees, excellent conditions, challenging golf.

RAILROADS

The West Chester Railroad

Market St. between Matlack & Franklin
West Chester, PA 19380
(610) 430-2233; www.westchesterrr.net; E-mail: jgfun59@aol.com
Located in the heart of the beautiful Chester Creek Valley, the West Chester Railroad operates between West Chester and Glen Mills. The scenery is breathtaking and the ride relaxing and magnificent.

RECREATION/SPECIAL EVENTS

Brandywine Picnic Park

Route 52, PO Box 70
Pocopson, PA 19366
(610) 793-3198; Fax: (610) 793-1814
E-mail: info@picnic.com; www.picnic.com
Beside scenic Brandywine River, BPP is the largest all-inclusive picnic area in the region. You'll be talking about the great food, amusements and fun time you had for years to come!

Chester County Parks & Recreation

601 Westtown Rd., Suite 160
West Chester, PA 19382
(610) 344-6415; Fax: (610) 344-5469
www.chesco.org/ccparks E-mail: ccparks@chesco.org
We serve the community by protecting and managing open space while interpreting natural and cultural resources. We enhance the quality of life through educational programs and recreational opportunities and partnerships.

Cherry-Crest Farm/Amazing Maize Maze

150 Cherry Hill Rd., Ronks, PA 17572
(717) 687-6843; Fax: (717) 687-8143
www.cherrycrestfarm.com
E-mail: maze@cherrycrestfarm.com
Discover a cornfield of great family fun; 5 acre corn maze, hayrides, petting zoo, dairy tours, food, special events. Fall harvest Saturday festivals—pumpkins, mums, popcorn and lots of fun!

WEST CHESTER RAILROAD

• SPECIAL HOLIDAY OF SPEC DEPART CHARTER

FPO
New To Be
Scanned
100%

LECT FALL &
OR SCHEDULE
RES.
GATIONS

610-430-2233
www.WestChesterRR.net



French Creek State Park

843 Park Rd., Elverson, PA 19520. (610) 582-9680
www.dcnr.state.pa.us/stateparks/parks/french.htm
 E-mail: lwilliams@dcnr.state.pa.us. 7,475 acre state park with modern cabins, 201 campsites, swimming pool, hiking, mountain biking, boating, fishing, orienteering, two-disk golf courses, group tenting. Reservations: 1-888-PA Parks.

Hibernia County Park

1 Park Rd., Wagontown, PA 19376. (610) 383-3812
 19th century iron plantation landscape including over 1000 acres of woodlands, meadows, play lots, trails, pavilions, camping, 90-acre lake for fishing/boating. Guided tours of ironmasters' Hibernia Mansion by appointment.

Marlborough Valley Corn Maze

Route 842 and Indianhanna Rd., Unionville, PA 19375
 (610) 347-1314; www.cornfieldmaze.com. 9-acre maize, petting zoo, food, hayrides, corn cannon, mini maize, pumpkin carve, bonfires, flashlight maize, Thurs/Sun: 10 am–5 pm, Fri/Sat: 10 am–10 pm. Haunted maize/Oct. Minutes from West Chester and Kennett Square.

Marsh Creek State Park

843 Park Rd., Elverson, PA 19520. (610) 582-9692
www.marshcreeksp.state.pa.us; E-mail: marshcreeksp@state.pa.us
 State Park 1705 acres, swimming pool, hiking, picnicking, mountain biking, 535 acre lake with boating and fishing.

Nottingham County Park

150 Park Rd., Nottingham, PA 19362. (610) 932-2589
 Over one square mile in size, one of the largest serpentine barrens on the East coast. Popular park near the PA-MD state line with pavilions, hiking and rare plant species.

Springton Manor Farm

860 Springton Rd., Glenmoore, PA 19343. (610) 942-2450
 300 acres, part of a William Penn Manor, in agricultural use since the 1700s; Animals, fishing, hiking, gorgeous vistas, special events, educational programs, Victorian garden, Butterfly House; Manor House available for weddings, private parties.

Stroud Water Research Center

970 Spencer Rd., Avondale, PA 19311. (610) 268-2153
 Fax: (610) 268-0490; www.stroudcenter.org. A global leader in freshwater research and public education of watershed restoration, this beautiful facility along the banks of the White Clay Creek is one of Chester County's hidden treasures. Tours by appointment.

Struble Trail

Three mile trail parallels the scenic east branch of the Brandywine Creek for jogging, walking and biking. For trail access information call (610) 942-2450.

Warwick County Park

382 County Park Rd., Pottstown, PA 19465
 (610) 469-1916. Four miles west of Rte. 100 off Rte. 23 in N. Chester County; 538 acres; nature study, fishing, hiking; provided timber to make charcoal used in the 18th and 19th century. Portions of the French Creek and horse-shoe trail extend through property.

West Chester Cycling Classic

2 W. Gay St., Suite 200, West Chester, PA 19380
 (610) 696-4046; Fax: (610) 696-9110
www.ironhilltwilightcriterium.com. Organizational host of the Iron Hill Twilight Criterium, a professional cycling race in downtown West Chester. In 2006, it will be held June 10.

West Chester Recreation Department

401 East Gay St., West Chester, PA 19380
 (610) 436-9010; Fax: (610) 436-0009
www.west-chester.com
 E-mail: recreation@west-chester.com
 Provides recreational programming for The Borough of West Chester, East Bradford Twp. and Westtown Twp. We provide recreational programming for adults and children. All are welcome!

WINERIES

Brandywine Valley Wine Trail

www.bvwinetrail.com
 Seven premium wineries in Southern Chester County; visit, tour, taste!

Chaddsford Winery

632 Baltimore Pike, Chadds Ford, PA 19317
 (610) 388-6221; Fax: (610) 388-0360
www.chaddsford.com; E-mail: cfwine@chaddsford.com
 Visit Pennsylvania's most acclaimed winery, taste nationally recognized wines like Chardonnay, Merlot and Pinot Grigio. Located between Longwood Gardens and Brandywine River Museum. Open daily 12–6; tours, tastings, sales.

Folly Hill Vineyards

700 Folly Hill Rd., Kennett Square, PA 19348
 (610) 388-5895; Fax: (610) 388-2685
www.follyhillvineyards.com
 E-mail: sherrysowers700@comcast.net
 Charming vineyard, 200-year-old Quaker farmhouse backs into Longwood Gardens; Bring a picnic, walk, just relax. Sales and tastings in the stone carriage house. Open 11am–6 pm Sat and Sun; weekdays by appointment.

French Creek Ridge Vineyards

200 Grove Rd., Elverson, PA 19520. (610) 286-7754
 Fax: (610) 286-7772; www.FrenchCreekRidge.com. Beautiful winery and vineyards in historic setting; specializing in premium, dry wines, award winning champagnes and a luscious dessert wine; Tasting and sales Wed.–Sun. Noon–5 pm.

Kreutz Creek Vineyards & Winery

553 S. Guernsey Rd., West Grove, PA 19390. (610) 869-4412
 Fax: (610) 869-6349; www.kreutzcreekvineyards.com
 E-mail: kreutzcreek@aol.com. Enjoy our handcrafted wines while picnicking in our scenic vineyard located in beautiful Southern Chester County. Open Sat & Sun 11am–6 pm or daily by appointment.

Paradocx Vineyard

452-464 Chesterville Rd., Landenberg, PA 19350
 (610) 255-5684; www.paradocx.com
 E-mail: paradocx.hoffman@verizon.net. Paradocx Vineyard carefully farms 30 acres of premium Vinifera grapes producing small lots of select wines currently available at Paradocx Vineyard Tasting Room at 544 Kennett Pike, Fairville, PA.

Stargazers Vineyard

1024 Wheatland Dr., Coatesville, PA 19320
 (610) 486-0422; www.stargazersvineyard.com
 E-mail: stargazers@kennett.net. Family winery based on European model of growing/making wine; Wine Shops at Country Butcher, Kennett Square and Morning Glories, Oxford; Tasting/sales at winery Sundays 10am–6 pm or by appointment.

Twin Brook Winery

5697 Strasburg Rd., Gap, PA 17527
 (717) 442-4915; Fax: (717) 442-8669; www.twinbrookwinery.com
 Picturesque estate winery! Stroll through vineyards and visit our beautifully restored 19th century barn, housing winemaking facilities and a rustic yet elegant tasting room. Open daily; Mon–Sat 10 am–6 pm, Sun 12–5 pm.

Va La Family Farmed Wines

8822 Gap Newport Pike (Rte. 41), Avondale, PA 19311
 (610) 268-2702; www.valavineyards.com. Va La specializes in horrendously tiny batches of unusual wines made from the unholy marriages of Italian and French varieties. Fri 12–5:29 pm; Sat and Sun 12–5:58 pm.

CHADDSFORD WINERY

Great Wines

Visit this charming country winery on a small estate in Chadds Ford. Tour the winemaking and barrel aging cellars, taste the current vintage of nationally acclaimed wines, and bring a picnic to enjoy on the scenic grounds. Open everyday, 12–6 p.m.

Great Times

Upcoming Special Events:
 September 24 & 25: Harvest Fest
 Spiced Apple Sundays in October
 Holiday Open House in December

CHADDSFORD WINERY
 Route 1, Chadds Ford
 610-388-6221
 See more events at:
www.chaddsford.com

Brandywine Valley Wine Trail

VISIT WINE COUNTRY!
 Lush leafy vineyards.
 Barrel-filled cellars.
 Charming tasting rooms.
 World class wines. You'll find it all in the rolling hills and scenic countryside of Southern Chester County, Pennsylvania, where our six premium vineyards and wineries are located. Come taste our current vintage!

SPECIAL EVENTS:

SEPTEMBER 24 & 25:
 Brandywine Harvest Festival

OCTOBER 29:
 Winemaker's Harvest Dinner

EVERY WEEKEND IN MARCH
 Barrels on the Brandywine

Chaddsford Winery
Folly Hill Vineyards
Kreutz Creek Vineyards
Paradocx Vineyard
Twin Brook Winery
Va La Vineyards

WE'RE CLOSER THAN YOU THINK!

Visit us at www.bvwinetrail.com
 for more information, map & brochure

history & culture start here...



Englishman, Quaker and explorer William Penn established **Chester County** in 1682. It was one of the three original Pennsylvania counties, along with Philadelphia and Bucks. In 1799, the population of Turk's Head was 374. Renamed to West Chester, it was and still is the county seat. The historic districts of **Phoenixville** and **Coatesville** boast America's earliest iron and steel forges. In 1885, in **Kennett Square**, two florists began growing mushrooms. Today, we are the **Mushroom Capital of the World**. Chester County was the first stop on the "freedom train" for freed slaves. And of course the **Brandywine Valley** was home to battles such as the **Battle of the Brandywine** and the **Paoli Massacre**.

1756 Uwchlan Meeting House

PO Box 212 (5 N. Village Ave.), Lionville, PA 19353-0212 (610) 363-9726. A 1756 Quaker Meeting House that in the past was a grade school, a military hospital during the Revolutionary and Civil Wars and is currently a treasure for community functions.

American Antique Ice Tools Museum

933 Bridle Ln., West Chester, PA 19382. (610) 436-5774. Unique museum educating about the ice industry from as early as the 1800s; Includes ice trucks, ice wagons, ice hand tools, ice boxes, ice cards and ice industry photos.

Abraham Feters-White School Preservation Society

723 N. Pottstown Pike, Exton, PA 19341. (610) 827-7364 www.feters-whiteschool.org; E-mail: info@feters-whiteschool.org Restoration of 1863 one-room schoolhouse located at Rte. 100 and Worthington Rd., Exton. Restoration in-process to "bring back to life" this historic building as a community meeting center. Brochure Available.

Berwyn Veterans Memorial

PO Box 100, Berwyn, PA 19312. (610) 889-9966 Fax: (610) 889-9969; E-mail: info@berwynveteransmemorial.com The Berwyn Veterans Memorial, Route 30 in Berwyn, is the largest memorial of its kind in Chester County. Visit this memorial to honor our veterans and to cherish our freedom.

Brandywine Battlefield Park

U.S. Route 1, Chadds Ford, PA 19317. (610) 459-3342 Fax: (610) 459-9586; www.ushistory.org/brandywine E-mail: erump@state.pa.us. The Battle of Brandywine on Sept. 11, 1777 was the largest single day land battle of the American Revolution. Tours include two historic houses: the Ring House used by General Washington as his headquarters, and the Gilpin House.

Chadds Ford Historical Society

Creek Rd. (old Route 100), 1/4 mile north of U.S. Route 1, Chadds Ford, PA 19317. (610) 388-7376 www.chaddsfordhistory.org E-mail: info@chaddsfordhistory.org Barn Visitors Center—Vintage photo exhibit, "Changing Times: Chadds Ford People and Places," weekdays 9 am-2 pm. Two 18th century house-museums: John Chadd's House, Barnes-Brinton House—tours, costumed guides, weekends May-Sept, 1-5 pm, or appointment.

City of Coatesville

1 City Hall Place, Coatesville, PA 19320. (610) 384-0300 Fax: (610) 384-3612; www.coatesville.org E-mail: mainstreet@coatesville.org. Chester County's only city is located along the Brandywine Creek and Historic Lincoln Highway. Victorian architecture, Lukens Historic District, one of the country's oldest steel mills—a must see place!

Downingtown Area Historical Society

PO Box 9, Downingtown, PA 19335. (610) 269-1167 Fax: (610) 2691248; www.downingtownhistoricalsociety.org E-mail: cgrigson@aol.com. The permanent home for the Downingtown Area Historical Society is the Ashbridge House (c1709). It is a research center and historical education facility.

East Vincent Township

262 Ridge Rd., Spring City, PA 19475. (610) 933-4424 Revolutionary War Soldiers Cemetery, Rte. 23 & Hill Church Rd., just west of Phoenixville. This small cemetery contains the graves of 22 unknown soldiers who died in the adjacent German Reformed Church in 1778.

French & Pickering Creeks Conservation Trust, Inc.

3340 Conventryville Rd., Pottstown, PA 19465. (610) 469-0150 Fax: (610) 469-6459; www.frenchandpickering.org E-mail: office@frenchandpickering.org. Coventry House: Early 18th century iron master's house on a 27-acre site next to an old burying ground. Tradition holds that Benjamin Franklin tested the first "fireplace" stove here.

Graystone Society, Inc.

76 S. First Ave., Coatesville, PA 19320. (610) 384-9282 Fax: (610) 384-9022; www.graystone.org. Lukens Historic District. Historic homes of the Lukens and Huston families, founders of Lukens Steel Co., Brandywine Mansion—1750; Terracina—1850; Graystone Mansion—1889; Lukens Main Office—1902. Guided tours—call for appt. (610) 384-9282.

Greenbank Mill Associates, Inc.

500 Greenbank Rd., Wilmington, DE 19808. (302) 999-9001 Fax: (302) 999-1279; www.greenbankmill.org E-mail: greenbankmills@aol.com. Experience Delaware in the early republic (1790-1830) at this 300-year-old gristmill, textile mill and farm site. History comes alive with the 18-foot water wheel, heritage livestock and hands-on activities.

Historic Kennett Square

PO Box 333, Kennett Square, PA 19348. (610) 444-8188 Fax: (610) 444-4798; www.historickennettsquare.com E-mail: ksrtf@kennett.net. Walk historic Kennett Square's tree lined streets and enjoy browsing, dining and shopping. Visit the outdoor Farmer's Market every Friday and the Art Stroll on the First Friday of the month.

Historical Society of Delaware

505 Market St., Wilmington, DE. (302) 655-7161 Fax: (302) 655-7844; www.hsd.org E-mail: hsd@hsd.org Market St., Wilmington, which includes the Distinctively Delaware™ exhibit. Operates the Read House & Gardens in New Castle, DE, a grand, federal mansion built in 1801 and the Delaware History Museum.

Historical Society of the Phoenixville Area

204 Church St., Phoenixville, PA 19460 (610) 935-7646; www.phoenixvillehistoricalsociety.org E-mail: hspa@allvantage.com. Preserving the history and heritage of the Phoenixville area, the Society operates a museum, archives and library. Open Wed & Fri, 9 am-3 pm. First Sundays, 1-4 pm, and By Appointment. Free Admission.

Historic Waynesborough

2049 Waynesborough Rd., Paoli, PA (610) 647-1779; Fax: (610) 647-1015; www.madanthonywayne.org E-mail: info@madanthonywayne.org. Georgian style country manor; ancestral home of Revolutionary War hero, Major General Anthony Wayne; Museum shop, outdoor weddings, Carriage House for meetings. Open Mid-March thru Mid December. Wed-Thu 10-4; Sat 10-1; Sun 1-4. Admission.

Historic Yellow Springs, Inc.

1685 Art School Rd., PO Box 62, Chester Springs, PA 19425 (610) 827-7414; Fax: (610) 827-1336; www.yellowsprings.org E-mail: inquiries@yellowsprings.org. A living 145 acre community serving as a historical health spa, revolutionary war hospital, soldier's orphan school, etc. This quaint village is a monument to history. Programs and events scheduled throughout the year.

Hopewell Furnace National Historic Site

2 Mark Bird Ln., Elverson, PA 19520 (610) 582-8773; www.nps.gov/hofu E-mail: hofusuperintendent@nps.gov. Restored iron plantation interpreting the work and lifestyles of early industrial America.

Kennett Underground Railroad Center

505 S. Broad St., PO 202, Kennett Square, PA 19348 (610) 347-2237; www.undergroundrr.kennett.net E-mail: undergroundrr@kennett.net. Learn about Kennett's part in the Underground Railroad in this small museum. Shop for books, maps, souvenirs. Phone or see our website for open hours, events and guided tours of local sites.

Lukens National Historic District

50 South First Ave., Coatesville, PA 19320 (610) 383-7707; Fax: (610) 384-3396; www.lukenshistoricdistrict.org E-mail: admin@stewarthuston.org. A collection of homes and an office building associated with the growth of the Lukens Steel Company and the Lukens-Huston families who owned and operated the company from the early 1800s to the late 1900s.

The Mill at Anselma Preservation and Educational Trust

1730 Conestoga Rd., PO Box 42, Chester Springs, PA 19425 (610) 827-1906; Fax: (610) 827-7345; www.anselmamill.org E-mail: info@anselmamill.org. Anselma's Working c. 1747 grist mill explores Chester County's rich agricultural and technological past through tours and flour grinding demos. Open Sat 10 am-4 pm; Sun 1-4 pm; May-Nov. See Events Calendar for demo schedule.

Paoli 250

PO Box 550, Paoli, PA 19301 (610) 889-1640 x101; Fax: (610) 695-2764; www.paoli250.org E-mail: edauble@aol.com. Celebrating 250 years of Paoli! Celebrating 250 years of Paoli's history, and embraces our future with various events; projects designed to engage the entire community. We welcome your time, treasure and/or talent.



Lukens Executive Office Building 1902



Terracina 1850

HUSTON PROPERTIES, INC.
INVITES YOU TO TOUR
THE LUKENS NATIONAL
HISTORIC DISTRICT

CALL 610-383-7707 FOR INFORMATION



Brandywine Mansion ca. 1750



Graystone Mansion 1889



Paoli Battlefield Historic Park

Monument & Wayne Aves., Malvern, PA 19355
 (610) 644-2602; www.ushistory.org/Paoli. Site of the Paoli Massacre, Sept. 20, 1777. Interpretive signs guide visitors through the actual battlefield, restored as it looked in 1777. 19th century monuments mark the American soldiers' grave. Open year round.

Valley Forge National Historical Park

1400 North Outer Line Drive, Valley Forge, PA 19482
 (610) 783-1077; www.nps.gov/vafo
 Commemorates the 1777-1778 winter encampment of General Washington's Continental Army. The park is located at Rte. 23 and N. Gulph Rd. in Valley Forge. Welcome Center and Washington's Headquarters open 9am-5 pm daily.

West Chester Downtown

PO Box 3109, West Chester, PA 19381. (610) 738-3350
 Fax: (484) 843-2250; www.downtownwestchester.com
 E-mail: mjohnstone@westchesterbid.com or emcquire@malcolmj.com. West Chester ... The Perfect Town—with 75 retail shops, 10 art galleries and 45 restaurants.

Welkinweir

1368 Prizer Rd., Pottstown, PA 19465. (610) 469-7543
 Fax: (610) 469-2218; www.greenvalleys.org/welkinweir.asp
 Welkinweir, where sky meets water, offers both extensive naturalistic areas, which serve as a refuge for wildlife and an arboretum with ornamental gardens and specimen trees. On the National Historic Register.

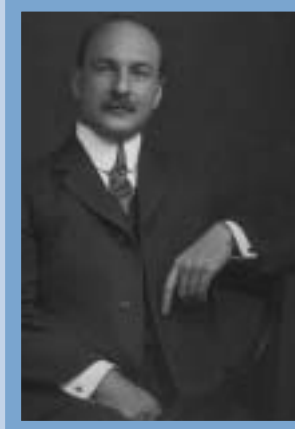
William Brinton 1704 House and Historic Site

1435 Oakland Rd., West Chester, PA 19382
 (610) 399-0913; Fax: (610) 399-9818; www.brintonfamily.org
 A national historic landmark containing an fine collection of SE Pennsylvania period furniture and artifacts; Authentic representative of 18th Century Chester Co. English Quaker dwellings. Open daily May-October. Other times by appt.

Longwood Gardens Celebrates 100 Years

Pierre S. duPont (1870-1954)

purchased an arboretum in 1906 to save it from destruction. Originally a land grant from William Penn, the arboretum and surrounding property, now 1,050 acres, today is known as Longwood Gardens. Fountains and fire-works are two of Longwood's signature events, but it is the entirety of the Gardens that brings thousands of people back every year. The orangery and orchid house may be seen in January or Egyptian Spur Clusters and Hydrangea in July. Every month of the year something is blooming at Longwood whether inside or outside. Longwood Gardens has worked hard to bring such beauty to an arboretum that was once on the verge of destruction nearly 100 years ago.



Longwood will begin celebrating its centennial with the grand reopening of the East Conservatory in October 2005 featuring Mediterranean and sub-tropical flora. The entire year of 2006 will be a year-long interactive exhibit. January 28 & 29 is the centennial weekend kick-off, in March there is a photography exhibit and July 20-22 is the Founder's Day Celebration, just to name a few of the events.

Visit Longwood Gardens on the web at LongwoodGardens.org or call (610) 388-1000.

Ladies and Gentlemen:
Andrew Wyeth



Another famous Brandywine Valley attraction,

the Brandywine River Museum (often referred to as the Wyeth Museum), will be collaborating with The Philadelphia Museum of Art in the Spring of 2006. *Andrew Wyeth: Memory and Magic* will be on display at

the Philadelphia Museum of Art April-July 2006. The exhibit will include around 100 paintings, some on loan from private collections (from as far as Japan).

...and continues here



Very few countryside destinations can claim such a strong concentration of world-class museums within minutes of each other. The Brandywine Valley contains many exquisite museums and gardens rivaling major metropolitan areas. The philanthropy of the du Pont family has left the legacies of **Hagley, Nemours Mansion and Gardens, Winterthur**, and of course, **Longwood Gardens**. Other museums include the **American Helicopter Museum**, the largest museum in North America dedicated to rotary wing flight, the **Chester County Historical Society**, and the **Wharton Esherick Museum-Wharton** being widely considered as the Dean of American Craftsmen.

The American Antique Ice Tools Museum

933 Bridle Ln.
 West Chester, PA 19382
 (Location: Stone Barn on Scennelltown Rd.)
 (610) 436-5774
 A unique museum educating about the ice industry from as early as the 1800's. The museum includes ice trucks, ice wagons, ice hand tools, ice boxes, ice cards and photos of the ice industry.

American Helicopter Museum & Education Center

1220 American Blvd. (near Brandywine airport off Airport Rd.), West Chester, PA 19380. (610) 436-9600; Fax: (610) 436-8642
 www.helicoptermuseum.org; E-mail: info@helicoptermuseum.org
 Over 34 helicopters show the past and future of rotor wing flight. Climb aboard the interactive hands-on helicopters! Fun for the whole family! Guided Tours/Birthday parties. Open to the public Wed-Sun.

Brandywine River Museum

U.S. Route 1, Chadds Ford, PA 19317
 (610) 388-2700; Fax: (610) 388-1197; www.brandywinemuseum.org
 E-mail: inquiries@brandywine.org. Exhibiting American art in a 19th-century gristmill, the Museum is internationally known for works by three generations of Wyeths and its collection of American illustration, still life and landscape painting.

Chanticleer Gardens

786 Church Rd., Wayne, PA 19087. (610) 687-4163
 Fax: (610) 293-0149; www.chanticleergarden.org. A 35-acre garden featuring lush courtyards of tropicals, perennials and containers; cut-flower and vegetable garden; exotic woodlands; ponds and water gardens; spectacular ruin garden. Open Wed-Sun, Apr 1-Oct 31. Admission Fee.

Chester County Art Association (CCAA)

100 North Bradford Ave., West Chester, PA 19382
 (610) 696-5600; Fax: (610) 918-1327; www.chescoart.org
 E-mail: chescoart@chescoart.org. CCAA is a non-profit, cultural organization that promotes participation in the arts through quality instruction, exhibitions and community outreach.

Chester County Historical Society

225 North High St., West Chester, PA 19380
 (610) 692-4800; Fax: (610) 692-4357; www.chestercohistorical.org
 E-mail: info@chestercohistorical.org. Uncover the intrigue of the past at the Chester County Historical Society. Learn the stories of regional heritage through permanent and changing exhibits, including the award-winning, hands-on History Lab.

LOOKING FOR A FUN FILLED FAMILY EXPERIENCE!

Touch Down at the American Helicopter Museum and Education Center of West Chester, Pennsylvania. We are the only place where kids from 4 to 12 can see, learn about and fly helicopters of all kinds.

FPO—New To Be Scanned 100%

JOIN US IN 2005
Rotorfest: Oct. 15 & 16
 All-helicopter air show! Parachute team, helicopter clown, helicopter rides, amusements, food and fun.

Santa: Nov. 26 & Dec. 3
 Visit with Santa as he arrives in a whirlybird! Photos, refreshments and activities.

FLY IN A HELICOPTER!
 Family helicopter rides—Third Saturday of every month

American Helicopter Museum & Education Center
 Brandywine Airport (next to QVC Studio)
 West Chester, PA 19380
 (610) 436-9600

Hours: Wed.-Sat. 10 am to 5 pm / Sunday: Noon to 5pm
 www.helicoptermuseum.org



Delaware Art Museum

2301 Kentmere Parkway, Wilmington, DE 19806
 (302) 571-9590; www.delart.org; E-mail: lenglehart@delart.org
 The state's premier art institution with renowned collections of 19th and 20th century American art, illustration and America's finest collection of Pre-Raphaelite art.

Delaware History Museum

504 Market St., Wilmington, DE 19801
 (302) 656-0637; www.hsd.org; E-mail: hsd@hsd.org
 Changing exhibits on Delaware history, as well as a permanent interactive exhibition, Distinctively Delaware, which focuses on 400 years of Delaware's history. Grandma's Attic offers children a hands-on history experience.

Delaware Museum of Natural History

4840 Kennett Pike, Wilmington, DE 19807
 (302) 658-9111; Fax: (302) 658-2610; www.delmnh.org
 E-mail: joutten@delmnh.org. Explore an African watering hole, marvel at life-sized Giant Squid, navigate across the Great Barrier reef, experience the interactive Discovery Room, and discover life-sized dinosaurs.

Hagley Museum

Route 141, Wilmington, DE 19807
 (302) 658-2400; Fax: (302) 658-3267; www.hagley.org
 Hagley museum is where the duPont story begins in the Brandywine Valley. It features the original duPont mills, estate and gardens as well as an interactive science exhibit.

Jenkins Arboretum

631 Berwyn Baptist Rd., Devon, PA 19333
 (610) 647-8870; Fax: (610) 647-6664; www.jenkinsarboretum.org
 E-mail: info@jenkinsarboretum.org. Enjoy the area's most spectacular collection of azaleas, rhododendrons and wild flowers preserved in a natural Pennsylvania woodland setting with unspoiled vistas. Plants are marked for a self-guided tour.

Longwood Gardens

US Rte. 1 South, PO Box 501, Kennett Square, PA 19348
 (610) 388-1000; Fax: (610) 388-2227; www.longwoodgardens.org
 Created by industrialist Pierre S. du Pont, Longwood offers 1,050 acres of gardens, woodlands, meadows; 20 outdoor gardens; 20 indoor gardens; 11,000 types of plants; fountains; educational and performing arts programs.

Planting Art around the County
 Art saturates Chester County



influencing not only local culture, but the area's overall appeal. Our local historic districts and boroughs offer a host of mainstream and bohemian galleries. West Chester, Kennett

Square, Phoenixville and throughout the Brandywine Valley, art is everywhere. In 2006 the Chester County Art Association will be celebrating its 75th Anniversary, still using the logo created in 1934 by one of the founders, N.C. Wyeth, Andrew's father. The Art Association plans on unveiling 75 planters around the county, painted by local artists and planted by local garden clubs, in 2006.

National Constitution Center.

525 Arch St., Independence Mall, Philadelphia, PA 19106
 (215) 409-6600 or (866) 917-1787; Fax: (215) 409-6650
 www.constitutioncenter.org; E-mail: mkramer@constitutioncenter.org
 The first museum in the world devoted to the Constitution. Visitors enjoy the latest in technology, including state-of-the-art multimedia exhibits, live theater, selected artifacts and interactive programming. Call for group tour reservations.

Nemours Mansion and Gardens (CLOSED til 2007)

1600 Rockland Rd., Wilmington, DE 19803.
 Tour reservations: (800) 651-6912; www.nemoursmansion.org
 E-mail: tours@nemours.org. Alfred I. duPont's French-style chateau furnished with fine examples of antique furniture, rare rugs, tapestries and outstanding works of art is set among spectacular formal gardens. Tours May-Oct; limited holiday tours Nov-Dec.

Philadelphia Museum of Art

26th St. & Benjamin Franklin Pkwy, Philadelphia, PA 19130
 (215) 763-8100; Fax: (215) 235-0050; www.philamuseum.org
 E-mail: mpr@philamuseum.org. Unique among American museums in its integrated presentation of fine and applied arts from Asia, Europe, and the United States with nearly 200,000 works spanning over 2,000 years.

Rockwood Mansion Park

610 Shipley Rd., Wilmington, DE 19809 (enter on Washington St.)
 (302) 761-4340; www.rockwood.org. Stroll the winding paths and visit the Victorian Mansion for a delightful retreat from the 21st century. Mansion tours 10 am-3 pm (on the hour). Walking paths 7am-10 pm. Butler's Pantry Self service café 7 am-5 pm. FREE.

Wharton Esherick Studio

Location: Horseshoe Trail, Valley Forge, PA
 (mailing address: PO Box 595, Paoli, PA 19301-0595)
 (610) 644-5822. Guided tours through the unique handcrafted home/studio of the late "Dean of American Craftsmen," reservations required.

Winterthur Museum & Country Estate

Route 52, Kennett Pike, Winterthur, DE 19735. (302) 888-4600
 (800) 448-3883; www.winterthur.org. Discover an incomparable blend of beauty and history at this former du Pont country estate! Spectacular spring blooms, mansion and garden tours, special exhibitions, Enchanted Woods children's garden, shopping and dining.

World of Scouting Museum

P.O. Box 2226, Valley Forge, PA 19482
 (610) 783-5311; www.worldofscoutingmuseum.org
 E-mail: mstscout@aol.com. Located on the campus of Washington Memorial Chapel in Valley Forge Park. Rarely seen historic Boy and Girl Scout memorabilia. Large groups call in advance. Sat-Sun, 12-5 pm.

DELAWARE PARK
 RACING • SLOTS • GOLF



LIVE AND SIMULCAST RACING



1506 SLOT MACHINES



PROFESSIONAL 18 HOLE COURSE

SLOTS OPEN – Sunday 12:00(noon) – 4:00am
 Monday - Saturday 8:00am – 4:00am

LIVE RACING – April through November, Saturday – Wednesday
 Post Time 12:45pm


GOLF COURSE – 18 hole Championship course
 At the Rail Wine Bar and Grille
 Call for tee times and reservations 302.994.6700

EXIT 4B OFF I95 (N OR S) • WILMINGTON, DE
302-994-2521 or 800-41-SLOTS • www.delawarepark.com

Video Lottery Agent for the Delaware Lottery. All games are Video Lottery games controlled by the Delaware Lottery. You must be 21 to play. HEADLINE 888-850-8888 • www.dogg.org

Don't miss...

it's about time



CCHS
 CHESTER COUNTY HISTORICAL SOCIETY

Hours:
 Monday – Saturday,
 9:30am to 4:30pm

Admission:
 CCHS Members free.
 \$5.00 for adults; \$4.00
 for senior citizens; and
 \$2.50 for children ages
 6 – 12. Children under
 five are admitted free.

225 North High Street
 West Chester, PA 19380
 610-692-4800
 www.chestercityhistorical.org

Did you know that January was not always the first month of the year?
 Did you ever see an embroidered planet?
 Do you know why eleven days were lost in 1752? *It's About Time* you found out at the Chester County Historical Society

March 21, 2005 – June 10, 2006



more to do



2005-06 EVENTS

SEPTEMBER

Sept 3: Ghost Tour. Rockwood Park. (302) 761-4340

Sept 9,10,11: Laurels at Landhope Combined Driving Event. International equestrian event. (610) 486-6814; www.laurelscde.com

Sept 10: 10 am-3 pm—Festival of Gardens. A tour of 23 private West Chester Gardens. Barclay Friends. (610) 696-5211; gardentour@bf.kendal.org

Sept 10,11: The Mushroom Festival, Kennett Square, PA. Fun, Food & Fung! (610) 925-3373

Sept 17: Native Plant Sale—Chester Springs Studio 10 am-4 pm

Sept 17,18: The Great Train Robbery. West Chester Railroad. (610) 430-2233

Sept 16,17,18: Coatesville Film Festival, Coatesville Area Arts Alliance. (610) 384-2535; www.CoatesvilleFilmFest.Info

Sept 18: West Chester Recreation Department—Chester County Restaurant Festival; www.west-chester.com

Sept 21: Annual Banquet, 6:30 pm at Phoenixville Country Club. Program: Battle of Brandywine. Historical Society of Phoenixville. (610) 935-7646

Sept 24,25: Brandywine Harvest Festival. Visit the six wineries of the Brandywine Valley Wine Trail. Tours, Tastings and Special Events at each winery. www.bvwinetrail.com

Sept. 25: Concert: Jenkins Arboretum. www.jenkinsarboretum.org. (610) 647-8870

Sept 25: Conservatory Classics: Bowman Braddock Duo Rockwood Park 4 pm. (302) 761-4340

Sept 25: 10 am-5 pm—Revolutionary War times. Annual re-enactment of Battle of Brandywine. Brandywine Battlefield. (610) 459-3342

Thru Sept 25: From Poussin to Cezanne: French Drawings. Philadelphia Museum of Art

OCTOBER

Oct 1: Ghost Tour. Rockwood Park. (302) 761-4340

Oct 1: Spiced Apple Sundays—Chaddsford Winery. Tours, Tastings and picnicking on the outdoor deck with live music. 2-5 pm. (610) 388-6221

Oct 1: Chester County Day House Tour. (610) 431-5301

Oct 1: "Scrumptious Saturday". 12-6 pm—A restaurant and Arts Festival in the Hert of downtown Oxford

Oct 1: 7 pm & 2 at 2 pm—DRACULA, a full-length ballet, choreography by Nancy Page. A ballet with a bite! Brandywine Ballet Co. (610) 696-0975

Oct 1: 7:30 am "Civil War reenactment". Nottingham County Park. (610) 932-0740

Oct 2: Conservatory Classics: Sparx. 4 pm Rockwood Park. (302) 761-4340

Oct 2: Marshalton Triathlon-Sunday. Athletic competition and a party. Live Music, Kids activities, food and drink. (610) 692-4367

Oct 6,7,8: Unionville Community Fair. Family fun for everyone! Rte. 82 on the Unionville High School Grounds, Unionville, PA. (610) 347-1726

Oct 7: Gallery Walk. Experience the art, dining and shopping of downtown West Chester. 610.696.4046 or www.westchestergallerywalk.com

Oct 8: Spiced Apple Sundays—Chaddsford Winery. Tours, Tastings and picnicking on the outdoor deck with live music. 2-5 pm. (610) 388-6221

Oct 8: 6-9 pm—Famous Brandywine Valley Artists create unique works of art benefiting Pennsbury Land Trust's conservation program. (610) 388-7401 or www.pennsburylandtrust.org

Oct 8: 8th Annual Kennett Brewfest (2-6 p.m.) www.historickennettsquare.com

Oct 8: Brewfest Connoisseur Tasting (12-1:30 pm) www.kennettbrewfest.com

Oct 9: Foliage Express. West Chester Railroad 12-2 pm. (610) 430-2233

Oct 15: 8 pm—Opening Night! at Emilie K. Asplundh Hall with violinist Ann Fontanella; performance of Tchaikovsky's Symphony No. 5. (610) 444-6363

Oct 15: Spiced Apple Sundays—Chaddsford Winery. Tours, Tastings and picnicking on the outdoor deck with live music. 2-5 pm. (610) 388-6221

Oct 16: Foliage Express. West Chester Railroad 12-2 pm. (610) 430-2233

Oct 17: Golf Benefit, Waynesborough Country Club, Ron Bridge. (610) 296-9844

Oct 22: Spiced Apple Sundays—Chaddsford Winery. Tours, Tastings and picnicking on the outdoor deck with live music. 2-5 pm. (610) 388-6221

Oct 22,23: Great Pumpkin Express. West Chester Railroad. (610) 430-2233

Oct 23-Feb 5: Jacob van ruisdael: Dutch Master of Landscape. Philadelphia Museum of Art. (215) 763-8100

Oct 27: Breakfast for Champions, People's Light, Sandy Claus. (610) 889-2125

Oct 29,30: Great Pumpkin Express. West Chester Railroad. (610) 430-2233

Oct 31: Dog Costume Competition-Monday (Halloween). Costume party for your dog. Four Dogs Tavern. (610) 692-4367

NOVEMBER

Nov 10-13: Phila. Museum of Art Craft Show at the PA Convention Ctr. (215) 684-7930

Nov 12: Gala Dinner, Waynesborough Country Club, Barb Mangos. (610) 834-1111

Nov 12: Indoor Flea Market 8 am-noon. Over 100 tables. Breakfast Available. (610) 918-0809; www.elversonfire.com

Nov 13-Jan 29: Beauford Delaney: From New York to Paris. Phila. Museum of Art. (215) 763-8100

Nov 6: Harvest Express. West Chester Railroad. (610) 430-2233

Nov 13: Harvest Express. West Chester Railroad. (610) 430-2233

Nov 19: 12-4 pm—Dornfelder 2005 celebration at Stargazers Winery; Complimentary onion tart and sausages. (610) 486-0422

Nov 19,20: Fall Antique Show & Sale—Sat 11 am-7 pm, Sun 11 am-4 pm. Over 40 dealers; Great country show. www.elversonfire.com

Nov 6: Harvest Express. West Chester Railroad. (610) 430-2233

Nov 22: Events: Ghost tour. Rockwood Park. (302) 761-4340

Nov 25,26,27: Santa's Express. West Chester Railroad. (610) 430-2233

Nov 26: 12-4 pm—Patriots Day. The battlefield will come alive with soldiers, civilians and craft demos. Brandywine Battlefield. (610) 459-3342

Thru Nov 27: Mavericks of Color. Philadelphia Museum of Art. (215) 673-8100

DECEMBER

Dec 1-4: Old-Fashioned Christmas in Downtown West Chester. Events for all; Friday night parade; holiday house tours! (610) 696-4046 or www.greaterwestchester.com

Dec 3: YWCA Holiday House Tour, an annual tour of historic and contemporary homes decorated for the holidays. (610) 692-3737

Dec 3: 8 pm—Home for the Holidays! at Kennett High School Auditorium featuring the Kennett Symphony Children's Chorus. (610) 444-6363

Dec 3,4: Santa's Express. West Chester Railroad. (610) 430-2233

Dec 4: 1-6 pm—Brandywine Valley Bed & Breakfast Assoc. 2nd Annual Holiday Open House; A self-guided tour of 15 historic B&B's. Tickets: www.bvbb.com. (610) 274-8169

Dec 10: Indoor Flea Market 8 am-noon. Over 100 tables. Breakfast Available. Elverson Fire House. (610) 918-0809 www.elversonfire.com

Dec 10,11: Santa's Express. West Chester Railroad. (610) 430-2233

Dec 10,11,17: 2 pm; **18:** 6 pm—The Nutcracker, a classic holiday ballet! Tickets: (610) 696-2711

Next Year, Spring and Beyond 2006

CHESTER COUNTY HISTORICAL SOCIETY ANTIQUES SHOW AT QVC STUDIO PARK
March 3-5, 2006

CHESTER COUNTY HISTORICAL SOCIETY: IT'S ABOUT TIME
March 21-June 10, 2006

PHILADELPHIA ART MUSEUM FEATURING ANDREW WYETH: MEMORY AND MAGIC
April-July 2006

LONGWOOD GARDENS FESTIVAL OF FOUNTAINS AND FIREWORKS
May-September 2006

WINTERTHUR POINT-TO-POINT
May 7, 2006

BRANDYWINE RIVER BLUES FESTIVAL (CHADDSFORD WINERY)
Memorial Day Weekend

DEVON HORSE SHOW
May 26-June 2, 2006

LONGWOOD GARDENS FOUNDER'S DAY CELEBRATION
July 20-22, 2006

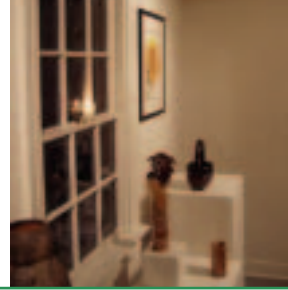
LAURELS AT LANDHOPE COMBINED DRIVING EVENT
September 8-10, 2006

KENNETT SQUARE MUSHROOM FESTIVAL
September 9-10, 2006

UNIONVILLE COMMUNITY FAIR
October 6-8, 2006

Please check with the attractions listed above, to confirm all dates and times. Information is subject to change after printing.

more to do



Dec 14: Quarterly Meeting of the Historical Society of Phoenixville, 7:30 pm. (610) 935-7646

Dec 17,18: Santa's Express. West Chester Railroad. (610) 430-2233

Dec 17,18: Holiday Open House. 5–8 pm Rockwood Park. (302) 761-4340

JANUARY

Jan 14: Indoor Flea Market 8 am–noon. Over 100 tables. Breakfast Available. Elverson Fire House. (610) 918-0809 www.elversonfire.com

FEBRUARY

Feb 11: Indoor Flea Market 8 am–noon. Over 100 tables. Breakfast Available. Elverson Fire House. (610) 918-0809 www.elversonfire.com

MARCH

Every Weekend in March: Barrels on the Brandywine. Visit all 6 cellars of the Brandywine Valley Wine Trail for tours, barrel-tastings, etc. www.bvwinetrail.com

Mar 11: Indoor Flea Market 8 am–noon. Over 100 tables. Breakfast Available. (610) 918-0809

March 12: YWCA Festival of Fine Dining, enjoy specialties from some of Chester County's finest restaurants, wineries and breweries. (610) 692-3737

Mar 18,19: Spring Antique Show & Sale—Sat 11 am–7 pm., Sun 11 am–4 pm. Over 40 dealers. Great country show. www.elversonfire.com

March 19: 2 pm—Peter and the Wolf at Emilie K. Asplundh Hall. FREE Children's concert with instrument petting zoo. (610) 444-6363

ONGOING

Third Saturday of the month April–October outdoor flea market is held Pennsbury Antique Mall. (610) 388-1620

Every Friday night: Art After 5. Have a drink, stroll through the galleries. (215) 684-7860

Sept 10–Nov 27: Looking at Art. Philadelphia Museum of Art. (215) 763-8100

Sept 16,17,18: Coatesville Film Festival, at LumenEssence Design Studio. Coatesville Area Arts Alliance. (610) 384-2535 www.CoatesvilleFilmFest.Info

Sept 23–Oct 1. Art Exhibition & Sale. www.jenkinsarboretum.org. (610) 647-8870

Sept 24–Dec 31: Edvard Munch's Mermaid. Philadelphia Museum of Art. (215) 763-8100

Oct 1–Dec 31: Exhibit: to the Nines: Fashion & Photography from the Nineteenth Century, Rockwood Park Center. (302) 761-4340

Oct 1–Jan 8: Football—hands-on exhibition teaching the science behind the game. Delaware Museum of Natural History. (302) 658-9111

Oct 14–30: Rea N. Redifer "Recent Watercolors". Chadds Ford Gallery (610) 459-5510; www.awyethgallery.com

Oct 14–Dec 23: Platters & Plates. Chester Springs Studio.

Nov 30–Dec 31: "24th Annual Christmas in Miniature Exhibit". Framed original art created in miniature for gift giving by 50 artists. Chadds Ford Gallery. (610) 459-5510

Dec 1–4: Old-Fashioned Christmas in Downtown West Chester. Events for all; Friday night parade; holiday house tours! (610) 696-4046 or www.greaterwestchester.com

May 20 & 21, 2006 Camphill ProAm Tennis Tournament benefit Camphill Special School. (610) 469-1715 for information.

AMERICAN HELICOPTER MUSEUM & EDUCATION CENTER

(610) 436-9600; www.helicoptermuseum.org

Sept 17: 11 am–3 pm—Family Helicopter Rides

Oct 15,16: 10 am–4:30 pm—Rotorfest—The All Helicopter Air Show

Nov 26: 10:30 am–noon & 1 pm–2:30 pm—Santa's Coming in a Whirlybird: Visit with Santa

Dec 3: 10:30 am–noon & 1 pm–2:30 pm—Santa's Coming in a Whirlybird: Visit with Santa

Jan 21: 11 am–3 pm—Family Helicopter Rides

Feb 18: 11 am–3 pm—Family Helicopter Rides

Feb 20: 11 am–5 pm—President's Day Open House

Mar 12: 1 pm–2:30 pm—Copter Kids Day

Mar 18: 11 am–3 pm—Family Helicopter Rides

BRANDYWINE RIVER MUSEUM

(610) 388-2700; www.brandywinemuseum.org

Sept 4,11,18 & 25: FREE Sunday mornings in September. 9:30 am–noon

Sept 10,11,17,18,24,25 & Oct 1,2,8,9,15,16,29,30 & Nov 5,6: Fall Harvest Market. Regional artisans showcasing their crafts.

Oct 1–Nov 20: Andrew Wyeth: Early Watercolors

Oct 15: Tree Planting in the Laurels. (610) 388-8315 www.youngfriends.org

Oct 22: Allhallows Eve Costume Ball. (610) 388-8315 www.youngfriends.org

Nov 25,26,27 & Dec 3,4,10,11,17,18,26,27,28,29,30: Holiday Shops

Nov 25–Jan 8, 2006: A Brandywine Christmas—Holiday displays, model railroad, Victorian dollhouse and thousands of "critter" ornaments Dec 3, 4—Annual Critter Sale. Handcrafted "critter" ornaments for sale.

CHADDS FORD HISTORICAL SOCIETY

(610) 388-7376; www.chaddsfordhistory.org. Exhibit—Changing Times: Chadds Ford People And Places. Weekdays thru Dec 31, 9 am–2 pm; weekends May thru Sept 1–5 pm.

Sept 3 & 4: Hospitality Days, 12–5 pm. FREE tours and demos at the Barns-Brinton House and John Chadds House.

Sept 10 & 11: 10 am–5 pm—Chadds Ford Days—FREE. Annual Open-air Colonial Fair; Arts and crafts, food, Revolutionary encampment, games, music.

Oct 26: 6:30–9:30 pm—"Preview Party"—Food by Carrabba's, beer by Victory, Wine by Folly Hill Vineyard. Reservations required. pumpkin carve@comcast.net

Oct 27,28,29: The Great Pumpkin Carve 5–9 pm. Artists carve pumpkins. Family fun, good food, lively music, hay rides!

Dec 3: Candlelight Christmas—1–6 pm. Self-guided holiday tour of historic house museums and private homes.

CHESTER COUNTY PARKS & RECREATION

www.chesco.org/ccparks; (610) 344-6415

Aug 13: Chester County Old Fiddlers' Picnic. 10 am–6 pm. Hibernia County Park. (610) 383-3812

Sept 24: Family Day at Springton manor Farm. 10 am–4 pm. (610) 942-2450

Sept 10: Birding at Black Rock 8–10 am. Black Rock Sanctuary.

Sept 10: Water: Our Most Precious Resource 11 am–12:30 pm. Warwick CountyPark

Sept 11: Human and Whitetail Deer—Issues & Solution. Warwick County Park 2–3 pm.

Sept 17: Fall Guided Hike—Warwick County Park. 2–3 pm.

Sept 17: Hibernia Harvest Moon Hike 7:30–9 pm

Sept 24: Fall Plant Swap—Hibernia County Park, Mansion Parking Lot 9–11 am.

Sept 25: Hunter Education (Part 1 of 2) 8 am–4 pm. Nottingham County Park.

Oct 1: Chester County Days—Showing of the Hounds. 9–10 am Warwick CountyPark

Oct 1: Travel Through Time on the Struble trail. 1–3 pm. Struble Trail.

Oct 2: Hunter Education (Part 2 of 2) Nottingham County Park

Oct 8: Wild Neighbors 10–11:30 am Springton Manor Farm, Carriage House.

Oct 8: Hike for the Physically Challenged. 2–3 pm Warwick County Park, Pavilion 1

Oct 12: Pumpkin Carving 7–8:30 pm Warwick County Park, Park Office.

Oct 14: Storytelling and Bonfire at Warwick County Park. 7 pm–9 pm. (610) 469-1916

Oct 15: Fall Foliage Wagon Ride 1–3 pm Hibernia County Park, Mansion Parking Lot.

Oct 22: Make your own Scarecrow and Hayride Warwick County Park, Pavilion 1.

Oct 22: Waterfowl Wonders at Chambers Lake. 4–6 pm Hibernia County Park.

Oct 29: 18th and 19th Century Wool and Rugs. 10–11:30am. Springton Manor Farm.

Nov 12: Wild Neighbors. 10–11:30 am Springton Manor Farm Carriage House.

Nov 12: Create a Backyard for Birds 1–2 pm Warwick County Park, Park Office.

Dec 3: Duffy's Cut—The Legend Continues. 9–11:30 am Springton Manor Farm.

Dec 10: Nutty for the Holidays in Nottingham 11 am–noon Nottingham Park.

Dec 10: Briding at Black Rock Sanctuary 8–10 am Black Rock Sanctuary.

Dec 10: Christmas at the Farm—12–3 pm Springton Manor Farm, Manor House.

GALLERY AT CEDAR HOLLOW

(610) 640-ARTS; hometown.aol.com/rbfinkel/myhomepage/artgallery.html "The Craft and Art Show Calendar" available for purchase—Give us a call.

Sept 17–Oct 23—"Wearable Art Show". Wonderful "Art to Wear" by American Artists; Jewelry, Apparel and more.

Oct 8,9: "Columbus Day Weekend Outdoor Fine Art and Craft Show." 12–6 pm. Rain or Shine. FREE admission, FREE parking across street.

Oct 22: 10 am–5 pm. "Craft and Arts At The Elmwood Park Zoo" for the Zoo. 1661 Harding Blvd., Norristown.

Nov 5–Dec 30: "The Holiday Craft Boutique Show". Wonderful handcrafted gifts and decor for Christmas, Hanukkah and more!

more to do



GARRUBBO BAZÁN GALLERY

(610) 696-1266

Sept 9: 5:30 pm to 8:30 pm—Opening Reception for Stan Smokler and Margo Allman.

Oct 1: 3 pm—Gallery talk by Stan Smokler about his creative process.

Oct 14: 5:30–8:30 pm—Opening Reception for John Suplee Solo Show.

Sept 9–Oct 8: Recent Steel Sculptures by Stan Smokler and Margo Allman—Recent Paintings.

Oct 14–Nov 12: John Suplee.

Nov 18: 5:30–8:30 pm—"The Gift Show" featuring Gallery Artists.

Nov 18–Jan 7: The Gift Show featuring various Gallery Artists.

HAGLEY MUSEUM

(302) 658-2400; www.hagley.org

Thru July 2006: "Centuries of Progress: American World's Fairs, 1853–1982" Use the museum's main entrance off Rte. 141 in Wilmington, DE.

Sept 18: 10 am–4 pm—The Hagley Car Show. Parades, music, food court. Parking at Barley Mill Plaza Rtes. 141 and 48 with shuttle bus service.

Oct 8: (rain date Oct 9) Harvest Party. Family Fun! Games, pumpkin carving, catering, Bluegrass music. Use Buck Rd. East entrance via Rte. 100.

Oct 15,16: Hagley's Craft Fair. Fine arts and crafts in all media. Use Buck Rd. East entrance via Rte. 100 to the Library Bldg. and Soda House.

Nov 25–Jan 1: Christmas at Hagley. (closed Dec 25). Use the museum's main entrance off of Rte. 141 in Wilmington, DE.

IMMACULATA UNIVERSITY

(610) 647-4400

Sept 16: Eric Mintel Jazz Quartet Concert. Villa Maria Hall. FREE

Oct 1: Amethyst Night "Oktoberfest" (live and silent auction) 6–11 pm in The Great Hall; Info: (610) 647-4400, ext. 3136

Nov 19: Fall Symphony Concert: "Noble Statements" 7:30 pm Alumnae Hall Theater. Info: (610) 647-4400, ext. 3473

Feb 11, 2006: 23rd Annual Immaculata University Art Show Preview Reception 6:00 pm Alumnae Hall; Info: (610) 647-4400, ext. 3126

Feb 12–Feb 19, 2006: 23rd Annual Immaculata University Art Show (FREE and open to the public) Info: (610) 647-4400, ext. 3126 or www.immaculataartshow.com

LONGWOOD GARDENS

(610) 388-1000; www.longwoodgardens.org

Sept 4 & 10: Fireworks & Fountains. Fireworks and fountains set to music create an incredible spectacle. Purchase tickets in advance.

Sept 10–Oct 4: GardenFest. Miniature garden railway, antique tractors, and harvest displays. Weekend swing band and carillon concerts.

Sept 27: Senior Day. An activity-filled day for older adults. Jazz concert with the Barbone Street Jazz Band.

Oct 8–28: Autumn's Colors. Brilliant foliage and fall flowers illuminate the gardens. Local bands perform on weekends.

Oct 29–Nov 30: Chrysanthemum Festival. Longwood's new East Conservatory debuts. New half-acre garden under glass, showcasing the Orient.

Nov 24–Jan 8: A Longwood Gardens Christmas. Spectacular indoor gardens, daily concerts and 420,000 evening lights.

THREE LITTLE BAKERS

(800) 368-3303; www.tlbinc.com

Oct 7: "A1A" is considered the first and foremost Jimmy Buffett Tribute Show.

Oct 8 & 9: Tenor Franco Spoto and Dick Contino, "the world's greatest accordionist" for an Italian American Celebration.

Oct 22: Brenda Lee—Well known hits, "I'm Sorry," "Sweet Nothin'," "Dum Dum" and "Fool #1."

Oct 28: The Hubcaps Dance Party—Fabulous Hubcaps consist of 7 lead vocalists. Kathie Martin is back!

Nov 5–Dec 30: The Magic of Christmas—Santa will arrive early for every performance; "A Child's Fantasy"; Living Nativity.

New Years Eve: Craig Raymond and The Next Generation Big Band 3LB's annual "Hits of the Season" revue.

Jan 19–22: Life Story of Marvin Gaye—Silky Silk Soul Singer.

Feb 2–26: My Way: A Tribute to Frank Sinatra.

March 2–April 29: The Wizard of Oz—Little Dorothy Gale of Kansas, dreams of what lies over the rainbow.

WEST CHESTER UNIVERSITY

(610) 436-1000; www.wcupa.edu

Sept 13: Eugene Alcalay, piano—7:30 pm; Philips Autograph Library.

Sept 14–Oct 21: Speaking For themselves Art exhibit. McKinney Gallery.

Sept 17: An Evening of Chinese Minority Music and Dance. 7:30 pm. Emilie K. Asplundh Concert Hall.

Sept 26, 27: Travel Adventures, Erie Canal. 7 pm. Sykes Union Theater.

Sept 30: High School Honors Choir. Swope Hall Auditorium.

Oct 15: Homecoming Parade, 10am; Football Game 2 pm.

Oct 15: Gala Opening Concert. Kennett Symphony of Chester County. 8 pm—Emilie K. Asplundh Concert Hall.

Oct 18: Play: "The Eternal Road." 4 pm. Sykes Union Theater.

Oct 30: 3 pm—Concert Choir. Swope Hall Auditorium.

Nov 2–Dec 9: "Where Two Worlds Meet" Art Exhibit. McKinney Gallery.

Nov 5: An Enchanted Evening—The Music of Broadway. Emilie K. Asplundh Concert Hall.

Nov 7,8: Travel Adventures—Ireland. Sykes Union Theater.

Nov 11, 12: Contemporary Dance Co.: "Blurring the Boundaries." Emilie K. Asplundh Concert Hall.

Nov 13: Harp festival X. Swope Hall Auditorium.

Dec 3: 8 pm—84th Annual Holiday Concert. Emilie K. Asplundh Hall.

Dec 4: 28th Annual Brian's Run. Sturzebecker Health & Sciences Center.

Dec 10,11,17,18: Brandywine Ballet: The Nutcracker. Emilie K. Asplundh Concert Hall.

Jan 23: Jeffrey Siegel, piano. Philips Autograph Library.

Jan 27: 8 pm—The Acting Company in The three Musketeers. Emilie K. Asplundh Concert Hall.

Feb 11: 3 pm—Winter Choral Festival. Swope Hall Auditorium.

Feb 20, 21: 7 pm—Travel Adventures. Lindbergh's Flight to Paris with Robin Williams. Sykes Union Theater.

Feb 25: 8 pm—Glenn Miller Orchestra. Emilie K. Asplundh Concert Hall.



sleep in

Chester County charm and hospitality invites you to stay overnight, and extend your visit to the Brandywine Valley. There are overnight accommodations for all budgets with over 7,000 hotel and B&B rooms to choose from. National chains like the **Sheraton**, **Hilton** and **Wyndham** are familiar, or privately owned hotels like the **Inn at Chester Springs**, the **Mendenhall Hotel** and the **Brandywine River Hotel** offer a boutique experience. Charming B&Bs such as the **Cornerstone Inn** or the **Pennsbury Inn** offer elegant accommodations, and like all of our B&Bs, a unique and personalized overnight stay. Some of our member lodging properties offer the Brandywine Sampler package, which allows you to visit local attractions for free and receive discounts at restaurants and shops. **Sleep in and stay late!**

HOTELS AND MOTELS

ACE Conference Center and Hotel

Ridge Pike and Manor Ave., Lafayette Hill, PA 19444
(800) 523-3000; (610) 825-8000; Fax: (610) 940-4343
E-mail: katie.schultz@ace-ina.com; www.aceconferencecenter.com
IACC member featuring 120 guest rooms, 38 meeting rooms, specially equipped indoor and outdoor recreational facilities, teambuilding courses and activities and superb cuisine. One-day meeting packages available for easy planning and budgeting.

Best Western Brandywine Valley Inn

1807 Concord Pike, Exit 8N, I-95, Wilmington, DE 19803
(302) 656-9436; (800) 537-7772; Fax: (302) 656-8564
www.brandywineinn.com; E-mail: resmgr@brandywineinn.com
Brandywine Valley Tourism Headquarters! Terrific packages with admission to area attractions from \$115/couple; Outdoor pool, in-room movies, complimentary deluxe continental breakfast; Shopping, restaurants nearby; Enjoy new Winterthur Suites or Country French Boudoirs.

Best Western Concordville Hotel

Rte. 322 & Rte. 1, PO Box 607, Concordville, PA 19331
(610) 358-9400; Fax: (610) 358-0390; www.concordville.com
E-mail: bestconcor@aol.com. Conveniently located in heart of Brandywine Valley. 115 rooms including suites, overnight packages; 16,000 sqft of meeting space, pool, exercise room; offering upgraded amenities. Deluxe continental breakfast daily; hot breakfast buffet Mon-Fri.

Best Western, The Inn at King of Prussia

127 S. Gulph Rd., King of Prussia, PA 19406
(800) WESTERN; (610) 265-4500; Fax: (610) 354-8905
E-mail: thaberland@bwk.com. Three Diamond rated property, complimentary Continental Breakfast, heated pool, spa & fitness center. Conveniently located to the King of Prussia Mall, Valley Forge National Park, Brandywine Valley and Historic Philadelphia.

Brandywine River Hotel

Rtes. 1 & 100, Chadds Ford, PA 19317
(610) 388-1200; (800) 274-9644; Fax: (610) 388-1200
www.brandywineriverhotel.com; E-mail: brhdos@aol.com
Boutique. Hotel features Fireside Suites with Jacuzzi and Deluxe Rooms. Located near the Brandywine Valley's most acclaimed attractions. Includes European Plus Breakfast and Afternoon tea. Lobby Bar, Business Ctr., Fitness Ctr. and Conference Rooms available.

Comfort Inn—Amish Country

626 West Main St., New Holland, PA 17557
(800) 296-466; (717) 355-9900; Fax: (717) 354-4193
www.comfortinnnewholland.com
E-mail: gm.pa186@choicehotels.com. Newly renovated gold-award winning hotel; Spacious rooms with one king or two queen beds, complete with fridges and microwaves. Deluxe continental breakfast included with stay. Close to area attractions.

Comfort Inn & Suites Brandywine Valley

1310 Wilmington Pike, West Chester, PA 19382
(610) 399-4600; Fax: (610) 399-6171
www.comfortatbrandywine.com. New upscale hotel. Suites with micro/fridge, whirlpools, coffee maker, indoor pool, gift shop; complimentary deluxe continental breakfast, minutes from Longwood Gardens and many Brandywine Valley attractions; Gold Hospitality Award Winner.

Comfort Inn—Valley Forge

550 West DeKalb Pike, King of Prussia, PA 19406
(800) 222-0222; (610) 962-0700; Fax: (610) 962-5435
www.comfortinn.com/hotel/pa189
E-mail: doscomfortinnkop@aol.com. With 121 luxurious guest rooms, free high-speed internet, HBO, Mini Bars in some rooms, complimentary continental breakfast, free access to Bally Total Fitness, walking distance to the King of Prussia Mall.

Courtyard by Marriott—Collegeville

600 Campus Dr., Collegeville, PA 19426
800-321-2211; (484) 974-2600; Fax: (484) 974-2601
www.marriott/PHLVG.com; E-mail: pattihotelsales@aol.com
Brand new hotel opening Sept 29! Marriott rewards, indoor swimming pool, Jacuzzi and fitness center on-site, restaurant, free high-speed internet, five spacious meeting rooms. Great weekend rates!

Courtyard by Marriott—Devon

762 W. Lancaster Ave., Wayne, PA 19087
(610) 687-6633; Fax: (610) 687-1150; http://marriott.com
E-mail: jacqueline.davis@marriott.com. Located in western suburbs of Philadelphia, 16 miles from downtown. Local attractions include Devon Horse show grounds and Chanticleer Gardens. 3 floors, 137 rooms, 12 suites, Indoor pool, restaurant and much more.

Courtyard by Marriott—Valley Forge

1100 Drummers Ln., Wayne, PA 19087
(610) 687-6700; Fax: (610) 687-1149. Features brand new rooms including FREE high speed Internet access, a business center in the lobby and a market for 24-hour access to food. We didn't reinvent Courtyard...you did!

The Cottage at Fox Quarry

PO Box 1022, Unionville, PA 19375-1022
(610) 444-1486; Fax: (610) 444-2296; E-mail: info@foxquarry.com
www.foxquarry.com. Just off Rte. 926 on N. Walnut Rd. Your home away from home for business or pleasure—Two nights to several months; Elegant, private, beautifully appointed country cottage on family estate; Complete kitchen. Private patio, gardens. Tranquil setting.

Crowne Plaza Valley Forge

260 Mall Blvd., King of Prussia, PA 19406
(610) 265-7500; (610) 902-9912; Fax: (610) 265-4076
www.cpvalleyforge.com; E-mail: lstjohn@cpvalleyforge.com
Located directly across from the mall, this newly-opened, exquisite hotel features 225 stylish guest accommodations, restaurant, lounge, two elegant ballrooms, state-of-the-art amphitheater, complimentary access to Bally Fitness with indoor pool.

Days Inn Wilmington

5209 Concord Pike, Wilmington, DE 19803
(800) 445-0852; (302) 478-0300; Fax: (302) 478-2401
www.mydaysinnwilmington.com; E-mail: Daysinnwilm@comcast.net
Complimentary Deluxe Continental Breakfast with hot waffle bar; Complimentary high speed internet in all rooms, business center. Ideally located in the heart of the Brandywine country and all area shopping.

The Desmond Great Valley Hotel and Conference Center

One Liberty Blvd., Malvern, PA 19355
(610) 296-9800; Fax: (610) 889-9869. www.desmondgv.com
E-mail: info@desmondgv.com. Beautifully appointed full service hotel and IACC approved Conference Center features exceptional dining in our award winning restaurants. Complimentary high speed internet in guestrooms and wireless access in public areas.

Doubletree Hotel Wilmington

4727 Concord Pike, Wilmington, DE 19803
(302) 478-6000, ext. 112; Fax: (302) 477-1492
www.doubletreewilmington.com
E-mail: shireen_kline@hilton.com. In the heart of the picturesque Brandywine Valley, just four miles north of I-95 adjacent the Concord Regional Mall. Only 25 minutes from the Philadelphia International Airport. B,L,D,R,MCC,HA.

Embassy Suites Hotel Philadelphia Airport

9000 Bartram Ave, Philadelphia, PA 19153
(215) 365-4500; 1-88-EMBASSY; Fax: (215) 365-4803
www.philadelphiaairport.embsuites.com
E-mail: Kelly.herbert@inrco.com. A 263 all-suite hotel located near the Philadelphia Int'l airport. Full-service restaurant and meeting spaces are available. Complimentary full cooked-to-order breakfast and managers reception.

Fairfield Inn by Marriott, Exton

5 North Pottstown Pike, Exton, PA 19341
(610) 524-8811; Fax: (610) 524-0562; www.fairfieldinn.com
E-mail: FFIExton@hotmail.com. 104 deluxe rooms; kings, doubles, Jacuzzi or accessible; complimentary deluxe continental breakfast; free high speed Internet; indoor pool, exercise room; Marriott Rewards. AAA. Located 1 mi from PA Turnpike.

Fairfield Inn by Marriott, Valley Forge

258 Mall Blvd., King of Prussia, PA 19406
(610) 337-0700; (800) 228-2800; Fax: (610) 337-0700
www.fairfieldinn.com; E-mail: lstjohn@cpvalleyforge.com
Ideal location across from King of Prussia Mall and nearby Valley Forge Park, this award-winning hotel features complimentary deluxe continental breakfast, Marriott Rewards; free access to Bally Fitness with indoor pool.

Hampton Inn Downingtown—Exton

4 N Pottstown Pike, Exton PA 19341
(610) 363-5555; Fax: (610) 363-4969; www.hamptoninnexon.com
E-mail: hotelinfo@hamptoninnexon.com. 100% satisfaction guarantee, free deluxe breakfast bar, coffee maker, outdoor pool. Located off the PA Turnpike at Exit 23, adjacent to Hoss's Family Steak and Sea House.

Hampton Inn Great Valley

635 Lancaster Ave., Frazer, PA 19355
(610) 699-1300 or (800) HAMPTON; Fax: (610) 699-1313
www.greatvalleyphiladelphia.hamptoninn.com
E-mail: Phlfz_Hampton@Hilton.com. 100% satisfaction guarantee, free hot breakfast, Hilton H Honors, free high speed internet access, outdoor pool, fitness center, adjacent to Outback Steak House; Great Weekend Packages.

Hilton Garden Inn

815 E. Baltimore Pike, Kennett Square, PA 19348
(610) 444-9100; Fax: (610) 765-1029
www.kennettsquare.gardeninn.com
E-mail: lori_malchione@hilton.com. The perfect location for business or pleasure! Hotel amenities include: Fitness Center, Heated Indoor Pool and Whirlpool, 24-hour business center, high speed internet; 24-hour pantry pavilion with sundries; 1 mile from Longwood Gardens.

Hilton Philadelphia Airport Hotel

4509 Island Ave., Philadelphia, PA 19153
(215) 365-4150; www.hiltonhotels.com. Less than two miles from Philadelphia International Airport, indoor pool, spa tub and fitness center. Focus is on providing travelers with a good nights sleep; Complimentary shuttle to airport.

Hilton Valley Forge

251 West DeKalb Pike, King of Prussia, PA 19406
(610) 337-1200; Fax: (610) 337-1959; www.valleyforgehilton.com
E-mail: royal_tettermer@hilton.com. Enjoy scenic beauty and luxurious comfort at this Valley Forge landmark. Convenient to everything the region offers while providing all the amenities to make your stay perfect.



West Chester

Located in the Heart of the Brandywine Valley



*Your answer to elegant banquet facilities,
spacious conference rooms and luxury accommodations.*



Free High-speed Internet

943 S. High St. • West Chester, PA 19382-5418

(610) 692-1900

Toll-free (outside Pennsylvania): (888) 664-6665

Fax: (610) 436-0159

www.hiwestchester.com

www.holiday-inn.com/westchesterpa

Holiday Inn Brandywine

4000 Concord Pike, Wilmington, DE 19803
(800) 465-4329 or (302) 478-2222; Fax: (302) 479-0850
www.holidayinn-brandywine.com
E-mail: carol.rogers.1@comcast.net. Full service hotel in the heart of the Brandywine Valley; Conveniently located near all area attractions; 138 sleeping rooms, 3 meeting rooms.

Holiday Inn Express

120 N. Pottstown Pike (Whitelands Towne Shopping Ctr),
Exton, PA 19341. (800) 906-6672; (610) 524-9000 Sales
Fax: (610) 524-8264; www.hiexon.com
E-mail: elaine.larosa@fieldhotels.com. Located in the heart of Chester County near restaurants, stores, convenient to all major attractions. Complimentary deluxe fireside continental breakfast, free local phone calls, free high-speed Internet access. AAA/AARP, Priority Club Rewards.

Holiday Inn Express Hotel & Suites Concordville/Brandywine

Rts. 202 & 1, 1110 Baltimore Pike, PO Box 607,
Concordville, PA 19331. (610) 358-1700; (800) 670-7275
Fax: (610) 558-8909; www.concordville.hiexpress.com
E-mail: reservations@concordvilleexpress.com. Conveniently located in the heart of the Brandywine Valley, this unique hotel offers a wide variety of suites and standard rooms, along with state of the art meeting facilities.

Holiday Inn Express Hotel & Suites King of Prussia

260 N. Gulph Rd., King of Prussia, PA 19406
(610) 768-0225; E-mail: andrea.todd@hershahotels.com
Adjacent to the King of Prussia Court & Plaza, the PA Turnpike (Exit 326) and I-76 Interchange, 155 renovated guest rooms & suites, complimentary continental breakfast, fitness room, spa, free HSI access.

Holiday Inn Morgantown

6170 Morgantown Rd., Morgantown, PA 19543
(800) 339-0264 or (610) 286-3000; Fax: (610) 286-1920
www.holiday-inn.com/morgantownpa; E-mail: longs@harihotels.net
Located in Amish Country, we are the perfect location. Exit 22 off of the PA Turnpike, a three diamond rating from AAA and four-star rating from Mobile Travel.

Holiday Inn Philadelphia Airport

45 Industrial Highway, Essington, PA 19029. (610) 521-2400
Fax: (610) 521-1605; www.ichotelsgroup.com. Pets allowed, out-door pool, kids eat free, iron/ironing board, coffeemaker, health/fitness center on-site, hairdryer, A/C public areas.

Holiday Inn West Chester

943 South High St., West Chester, PA 19382
(610) 692-1900; Fax: (610) 692-5598.
www.holidayinn.com/westchesterpa. E-mail: doshiwc@aol.com
Conveniently located in historical West Chester; One block from WCU only minutes from Brandywine Valley attractions; Full meeting and banquet facilities for 500. Complimentary high-speed Internet access.

Homestead Studio Suites Hotel

8 East Swedesford Rd., Malvern, PA 19355
(610) 695-9200; Fax: (610) 695-9248; www.homesteadhotels.com
E-mail: MGR-MLV@homesteadhotels.com. Newest all-suites hotel in Malvern, located just off Rte. 202. Full kitchens, free continental breakfast (M-F), free social reception (M-F) outdoor barbeque patio area, exercise room, market, laundry, data ports, voicemail.

Homewood Suites by Hilton—Malvern

12 E. Swedesford Rd., Malvern, PA 19355
(610) 296-3500; (800) CALL HOME; Fax: (610) 296-1941
www.homewoodsuites.com; E-mail: phlgv_ds@hilton.com. All suite hotel, located just off 202 in Malvern. Spacious two room suite with kitchen, breakfast buffet, evening reception, meeting space, business center, fitness room, indoor pool. 100% guarantee.

Homewood Suites by Hilton—Valley Forge

681 Shannondell Blvd., Audubon, PA 19403
(610) 539-7300; Fax: (610) 225-2651
E-mail: bill_melton@hilton.com
Web: www.homewoodsuitesvalleyforge.com. Brand new all suite hotel located just off 422 in Valley Forge. Complimentary hot breakfast daily; light meal, beverages served Mon–Thurs. Free high-speed internet access in all rooms and public areas.

Step back to the unhurried pace of the past while enjoying the modern conveniences of today in a Brandywine Valley Bed & Breakfast

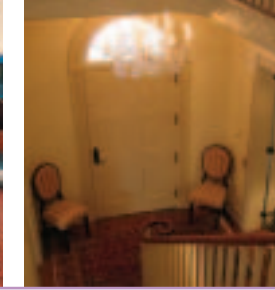
BVBB
Brandywine Valley Bed & Breakfast

NEW – FPO To Be Scanned 92%

- Unique properties
- Historic Charm and Character
- Delicious Gourmet Breakfasts
- Friendly, knowledgeable innkeepers

Visit our website for room photos, rates and availability; view innkeeper's tips on what to do, where to go and favorite places to dine.

www.brandywinevalleyinns.com



Hotel du Pont

11th & Market Sts., Wilmington, DE 19801
(302) 594-3100; (800) 441-9019; Fax: (302) 594-3108
www.hoteldupont.com. Historic four diamond 216 room luxury hotel, committed to impeccable service and uncompromising quality since 1913; World-class cuisine, over-size luxurious accommodations and unsurpassed excellence in service.

The Inn at Chester Springs

815 North Pottstown Pike (Rts. 100 & Gordon Dr., 1 mi from PA Turnpike exit 312), Exton, PA 19341
(610) 363-1100; (888) 253-6119; Fax: (610) 524-0639
www.innatchestersprings.com. E-mail: info@innatchestersprings.com
Full service hotel featuring 216 rooms and 9,000 sq ft of meeting space. Indoor/outdoor pool, Arthur's Restaurant & Bar, fitness ctr., 24 hr. business ctr. Minutes from all Brandywine Valley attractions.

Kennett Steak and Mushroom Restaurant and Motel

201 Birch St., Kennett Square, PA 19348
(610) 444-5085; www.kennettsteakandmushroom.com
Offering 13 comfortable guest rooms equipped with queen bed, remote TV, coffee maker and furnishings; attached to our stunning, yet casual, restaurant for your dining and entertainment pleasure. Please join us soon.

McIntosh Inn of Media

US Rte.1 & Rte.352, Media, PA 19063
(610) 565-5800; (800) 444-2775; Fax: (610) 565-7748
www.mcintoshinn.com E-mail: gmanahan@mcintoshinn.com
Located in the Philadelphia suburbs. Enjoy a pleasant night's rest in a clean, comfortable room at a reasonable price. Enjoy our complimentary continental breakfast, USA Today and free local calls.

Mendenhall Inn, Hotel and Conference Center

Rte.52, PO Box 208, Mendenhall, PA 19357
(610) 388-2100; Fax: (610) 388-2460; www.mendenhallinn.com
E-mail: Hionis@aol.com. Located in quiet, country village. Brandywine Valley attractions nearby; 70 rooms including suites, overnight packages, 14,000 sq ft of meeting space, exercise room, upgraded amenities. Hot breakfast buffet (Mon-Fri); deluxe continental breakfast daily.

Microtel Inn & Suites

500 Willowbrook Ln., West Chester, PA 19382
(610) 738-9111; Fax: (610) 738-9192; www.microtelinn-wcpa.com
E-mail: kim.turnbaugh@fieldhotels.com. Only 4 miles from QVC, 102 guestrooms, suites available, meeting room available, on site fitness center, coin operated washer and dryer, 24 hour complimentary coffee, tea, hot chocolate and continental breakfast.

Radisson Valley Forge Hotel

1160 First Ave., King of Prussia, PA 19406
(610) 337-2000; (888) 267-1500; Fax: (610) 768-0183
www.radisson.com/kingofprussiapa. 328 tastefully decorated deluxe accommodations including a Business Club Level and our unique fantasy and theme suites. A variety of family vacation, romantic and honeymoon packages are available.

Renaissance Philadelphia Airport

500 Stevens Dr., Philadelphia, PA 19113
(610) 521-5900; Fax: (610) 521-4362

Residence Inn by Marriott

10 N. Pottstown Pike, Exton, PA 19341
Phone & Fax: (610) 594-9705. All Suite property with a full deluxe complimentary breakfast, indoor pool and fitness center; evening reception Monday-Friday; 96 sleeping rooms, 1 meeting room.

Sheraton Great Valley Hotel

707 E. Lancaster Pike, (Rts. 202 & 30) Frazer, PA 19355
(610) 524-5500; Fax: (610) 524-1808; www.sheraton.com/GreatValley
E-mail: suzanne.walker@ihcco.com. Newly renovated in 2004, 198 rooms including 20 suites; Full service property with over 7,200 sq ft of meeting space and historic restaurant; Indoor pool/executive floor, Fitness center/weekend rates.

Sheraton Park Ridge Hotel & Conference Center—Valley Forge

480 N. Gulph Rd., King of Prussia, PA 19406
(610) 878-1455; Fax: (610) 337-4506
www.sheraton.com/valleyforge
E-mail: stephen.charamella@sheraton.com. Offering 265 elegant guest rooms featuring Sheraton's sweet sleeper bed! Internet access. IACC award winning conference center, restaurant, tavern, outdoor pool, sports court, fitness center, Starwood Preferred Guest program!

Sheraton Suites Wilmington

422 Delaware Ave., Wilmington, DE 19801
(302) 654-8300; Fax: (302) 654-8010
www.sheraton.com/suiteswilmington. 228 two-room suites located in the heart of downtown Wilmington & the Brandywine Valley. Indoor pool, sauna, sofa bed and refrigerator are some of many amenities. Very competitive weekend rates available.

Sleep Inn

440 American Ave, King of Prussia, PA 19406
(484) 690-2000; Fax: (484) 690-2001; www.hershahotels.com
Gold Award Winning Choice brand hotel economical for business and family travelers. Complimentary deluxe continental breakfast buffet, exercise room, indoor pool and whirlpool. Free high-speed internet access in all rooms. Meeting space.

Staybridge Suites—Malvern

20 Morehall Rd., Malvern, PA 19355
(610) 296-4343; Fax: (610) 296-3942; www.staybridge.com/malvern
E-mail: thuy.carlson@ichotelsgroup.com. Easily accessible off Rte. 202 in Malvern, all suite hotel with 1 or 2 bedroom suites, full kitchens and spacious living room; complimentary daily breakfast buffet, outdoor barbecue areas and pool.

Wyndham Valley Forge Suites

888 Chesterbrook Boulevard, Wayne, PA 19087
(610) 647-6700; (800) WYNDHAM; www.wyndham.com
E-mail: fkarl@wyndham.com. 229 elegant suites with bedroom and living room, 3 phones, 2 TV's, refrigerator, mini bar, iron; restaurant, lounge, indoor pool, whirlpool, health club, sauna; 5400 sq ft of meeting space. Free parking.

BED AND BREAKFASTS

A Bed and Breakfast Connection

Box 21, Devon, PA 19333. (800) 448-3619
(610) 687-3565; Fax: (610) 995-9524; www.bnbphiladelphia.com
E-mail: bnb@bnbphiladelphia.com. Since 1986, the knowledgeable staff, who live in the area and have visited the accommodations represented, have been connecting guests to the perfect B&B. Let us do the same for you!

A Brandywine Valley Bed & Breakfast Association

www.bvbb.com; E-mail: info@bvbb.com. Enjoy true Brandywine Valley style hospitality at one of our member B&Bs. Link directly to our B&Bs, check availability, make reservations or get help planning your visit to the Brandywine Valley.

N O W O P E N

Experience
the
Majesty!

Ideally located across from the King of Prussia Mall, the new Crowne Plaza Valley Forge hotel is just minutes away from such area attractions as the Historic Valley Forge National Park, Longwood Gardens, the Brandywine River Museum and only 20 minutes from the history and nightlife of downtown Philadelphia. Each guest room offers high speed internet access and all guests receive complimentary access to Bally's Total Fitness Center. Dine at our award-winning Stirling's restaurant and lounge.

260 mall boulevard
king of prussia, pa | 610.265.7500
sales@cpvalleyforge.com
www.cpvalleyforge.com

Comfort Inn & Suites
Brandywine Valley
West Chester/Chadds Ford, PA

Your Comfort, Your Choice...!

GOLD Hospitality Award Winner

NEW – FPO
To Be Scanned
48%

Luxurious Accommodations • Free Local Calls / 800 Access • Fitness Center
Gardens, Brandywine • Free High Speed Internet Access • Free Continental Breakfast
• Indoor Heated Pool • Whirlpool & Presidential Suites • Business Center
• Gift Shop w/ Wine & Beer

ONE NIGHT SAMPLER PACKAGE with Longwood Gardens tickets & TWO NIGHTS SAMPLER PACKAGE with area attractions are available.

15% Off January – March 2006

Not valid with any other discount & on special weekends

For Reservation Call (610) 399-4500

1110 Wilmington Pike (Route 202), West Chester, PA 19382

www.comfortinn.com



1732 Folke Stone Bed and Breakfast

777 Copeland School Rd., West Chester, PA 19380
(610) 429-0310; (800) 884-4666; Fax: (610) 918-9228
www.bbonline.com/pa/folkestone; E-mail: folkband@aol.com
Enjoy the ambience of yesteryear in this charming 1732 William Penn land grant home; family antiques; Steinway piano. Inviting guest rooms, kings, queen, twins, private baths, A/C. Gourmet breakfast by fireside. V,MC.

Bancroft Manor Bed & Breakfast

318 Marshall St., PO Box 654, Kennett Square, PA 19348-0654
(610) 444-9101; (866) 447-9101; www.bancroftmanor.com
A two-time, first place winner in Kennett's Christmas contest, this 1909 Victorian offers a king suite, queen and full rooms, large common rooms, park-like yard, antiques and sumptuous breakfast.

Bed and Breakfast at Walnut Hill

541 Chandler's Mill Rd., Avondale, PA 19311
(610) 444-3703; Fax: (610) 444-6889
www.bbonline.com/pa/walnuthill; E-mail: millsjt@magpage.com
Historic millhouse overlooking horse-filled meadow and stream; canopied double, king/twin bedded wing, private baths, antiques, hot tub, A/C. Distinctive country breakfast; 7 min. from Longwood. Featured in Fodor's America's Favorite Inns and B&Bs.

Brandywine Manor House Inn

120 Germany Hollow Rd., Honey Brook, PA
(Mailing Address: PO Box 420, Elverson, PA 19520)
(610) 942-2200; www.brandywinemanorhouse.com
E-mail: BmanorHouseInn@AOL.com. Large, elegant 1740 Manor House on 85 secluded acres in the heart of Chester County; period furnishings, private baths, satellite TV, meeting rooms, pool; ideal for outdoor weddings and corporate events.

Broadlawns B&B

629 North Church St., West Chester, PA 19380
(610) 692-5477; http://bbonline.com/pa/broadlawns
E-mail: broadlwn@erols.com. Step back in time! Elegant B&B in romantic setting; spacious guest rooms; fireplaces, private baths, TV's and VCR's; near Longwood; within walking distance to antique shops, restaurants. Gourmet breakfast.

Cornerstone B&B

300 Buttonwood Rd., Landenberg, PA 19350
(610) 274-2143; Fax: (610) 274-0734; www.cornerstoneinn.net
E-mail: info@cornerstoneinn.net. This elegant 18th Century country estate offers romantic accommodations with canopy beds, fireplaces, Jacuzzis for two, antiques, full country breakfast and award-winning get-away packages; Pet/family friendly cottages.

Daybreak Farm Bed and Breakfast.

476 Chesterville Rd. (Rt. 841), Landenberg, PA 19350
(610) 255-0282; www.bbonline.com/pa/daybreak
E-mail: daybreak@brandywine.net. A circa 1744 Quaker stone farmhouse on 20 wooded acres, convenient to Longwood Gardens and other Brandywine Valley attractions; two guest rooms with private baths, full breakfast, pond, central AC.

Ellmaker House Bed and Breakfast

5380 Lincoln Highway, Gap, PA 17527
(717) 442-1142; Fax: (717) 442-4139
www.ellmakerhouse.com
Heading to the Lancaster countryside? Make a day and night of it! Stay at this circa-19th Century six room B&B with meeting facilities located at Rts. 30 & 41; Modern amenities available.

Elver Valley Bed & Breakfast

432 Sawmill Rd., Cochranville, PA 19330
(717) 529-2803; (877) 863-5837; Fax: (717) 529-2803
E-mail: evrohrer@webtv.net. Our Guest home has two rooms, queen beds, private baths, A/C, dish TV, no stairs; full country breakfast; children welcome. Cabin sleeps twelve, full kitchen, picnic table, outside campfire, petting goats/alpacas, stream/pond.

Faunbrook Bed & Breakfast

699 West Rosedale Ave., West Chester, PA 19382
(610) 436-5788; (800) 505-3233; Fax: (610) 436-6371
www.faubrook.com; E-mail: innkeeper@faubrook.com
A distinctive, upscale B&B in a large historic mansion; 6 bedrooms; excellent venue for retreats, corporate and social events; In-town oasis!



CORNERSTONE BED & BREAKFAST

"The loveliest and authentically most historic bed and breakfast in Chester County. Truly delightful..." -Red Hamer, author
The Four Seasons of Chester County

- Quiet 18th Century Estate
- Canopy Beds and Private Jacuzzi Baths
 - Fireplaces
 - Full Country Breakfast
 - Therapeutic Massage
- Award-Winning Getaway Packages

You can tour the Inn at www.cornerstoneinn.net

300 Buttonwood Road, Landenberg, PA 19350 (610) 274-2143

Hamanassett B&B and Carriage House

725 Darlington Rd., PO Box 366, Chester Heights, PA 19017
(610) 459-3000; Reservations: (877) 836-8212
www.hamanassett.com; E-mail: Ashley@hamanassett.com
C1856 Romantic English Country house offers yesterday's charm, today's amenities, exceptional Personal service, Southern hospitality; Sumptuous candlelight breakfasts, elegantly appointed bedrooms with private ensuite bathrooms, billiards room, solarium; Pet/child friendly carriage house.

Harlan Log House

205 Fairville Rd., Chadds Ford, PA 19317.
(610) 388-1114; www.bbonline.com/pa/harlan. Quaker farmstead on the National Register of Historic Places; Serene 5-acre setting between Winterthur and Longwood Gardens; Bedroom fireplaces, private baths, gardens, canopy beds, 1814 springhouse; sitting porch with rustic rockers. \$100-\$145.

Hedgerow Bed and Breakfast Suites

268 Kennett Pike, (Rte. 52), Chadds Ford, PA 19317. (610) 388-6080
www.brandywine-valley.com; E-mail: hedgerowbb@aol.com
Restored separate carriage house between Longwood/Winterthur. Luxurious suites: private baths, canopied queen, twins, king with fireplace, wet bar, Jacuzzi. Amenities: full breakfast, refreshments, telephone, TV/VCR, central A/C. Credit cards.

Kennett House Bed & Breakfast

503 W. State St., Kennett Square, PA 19348
(800) 820-9592; Fax: (610) 444-7633; www.kennethouse.com
E-mail: innkeeper@kennethouse.com Elegant granite mansion in the Arts & Crafts style, nestled in historic Kennett Square; Walking distance to galleries, gifts and gourmet restaurants; Minutes from Longwood Gardens, Winterthur and Brandywine River Museum.

Pennsbury Inn Bed & Breakfast

883 Baltimore Pike, Chadds Ford, PA 19382
(610) 388-1435; Fax: (610) 3881436; www.pennsburyinn.com
E-mail: info@pennsburyinn.com. Historically prominent B&B; 8 landscaped acres; Minutes to museums, gardens; Six guest rooms with private, modern baths, feather beds. Featured in "LA and NY Times." Senior rates, full breakfast. Cozy, comfy, relaxing retreat!

Stebbins-Swayne House Bed & Breakfast.

221 South Union St., Kennett Square, PA 19348. (610) 444-9097
www.stebbins-swaynehousebedandbreakfast.com
E-mail: power_of_you@juno.com. Go back to a quieter time, relax, engage in conversation and history of the 1850's. Enjoy the gardens, afternoon tea or stroll into historic Kennett Square.

Tara's Inn B&B

69 E. 7 Star's Rd., Phoenixville, PA 19460
(610) 935-9145; Cell: (484) 645-4558. Dinner show third week of every month. Choose from six beautiful rooms each with their own private bath, TV and A/C. Corporate rates. Private parties. Near historic Kimberton and Valley Forge.

INNS

Duling-Kurtz House and Country Inn

146 South Whitford Rd., Exton, PA 19341
(610) 524-1830; Fax: (610) 524-6258; www.duling-kurtz.com
E-mail: dkhouse1@aol.com. Charming historic Country Inn located in the heart of Chester County. 15 unique guest rooms available starting at \$67.50 Continental breakfast included. L,D,R,MCC,HA.

Fairville Inn

506 Kennett Pike, Chadds Ford, PA 19317
(610) 388-5900; Fax: (610) 388-5902; www.fairvilleinn.com
E-mail: info@fairvilleinn.com. Dates from 1820's, 15 wonderfully enchanting rooms; Country breakfast, afternoon tea, fireplaces, decks/balconies, private baths, TV, A/C. Surrounded by tranquil hillsides; Convenient to all attractions! Corporate rates. Experience elegance!

Historic General Warren Inn

Old Lancaster Highway, Malvern, PA 19355
(610) 296-3637; www.generalwarren.com
E-mail: suites@generalwarren.com. Historic 1745 Country Inn. Eight charming guest suites with private baths, 6 with fireplaces, 1 with Jacuzzi; Fine dining continental cuisine restaurant on main floor; Private parties, intimate weddings, rehearsals.

Spend Time With Us
While Visiting the Brandywine Valley.

- ◆ Beautiful Guest Accommodations
- ◆ Conference and Banquet Space Available
- ◆ Delicious In-House Catering
- ◆ Complimentary Indoor Pool and Whirlpool
- ◆ Complimentary Business Center
- ◆ Minutes from Historic Kennett Square

Everything. Right Where You Need It.

Hilton Garden Inn
Kennett Square

815 E. Baltimore Pike
Kennett Square, PA 19348
610-444-9100



The Inn at Montchanin Village

Rte. 100 & Kirk Rd., Montchanin, DE 19710
 (302) 888-2133; Fax: (302) 888-0389
 www.montchanin.com; E-mail: inn@montchanin.com
 Historic Mobil 4 Star hotel and restaurant in an elegant country inn setting; 28 luxurious rooms and suites fully equipped for the discerning traveler; 3 meeting/private dining rooms. B,L,D,MCC,HCA,RV.

Inn at Whitewing Farm, A Bed & Breakfast

PO Box 98, Kennett Square, PA 19348
 (610) 388-2664; Fax: (610) 388-3650; www.whitewingfarm.com
 E-mail: info@whitewingfarm.com. A 1700s farmhouse with greenhouses, flower gardens, barn, stables, guest cottage on a pond, carriage house, situated on 43 rolling acres in historic Chester County. Elegance, private baths, adjacent to Longwood Gardens.

Pace One Country Inn

341 Thornton Rd., Thornton, PA 19373
 (610) 459-3702; Fax: (610) 558-0825; www.paceone.net
 Pace One has six (6) beautiful inn rooms, each decorated with a comfortable, country flair. Continental breakfast included; Private baths and TV. Starting at \$95.

Stottsville Inn

3486 Strasburg Rd., Pomeroy, PA 19367
 (610) 853-4090; Fax: (610) 857-4722
 Elegantly renovated including dining rooms, bar, porches, brick patio and nine charming rooms full of amenities; Romantic getaways, corporate over-nights, family celebrations: choose Historic Stottsville. Continental breakfast, TV, A/C, private baths.

APARTMENTS/LONG TERM LODGING

Barclay Friends

700 N. Franklin St., West Chester, PA 19380
 (610) 696-5211x433; Fax: (610) 918-3404; www.bf.kendal.org
 E-mail: sheverin@bf.kendal.org. Barclay Friends is a Senior Living Community with rooms for residential, assisted living and skilled care. We are a not-for-profit organization that is an affiliate of the Kendal corporation.

Korman Communities

311 Lancaster Ave., Malvern, PA 19355
 (610) 296-9700; www.korman1.com. Live better! Korman Communities specialize in extended stay, corporate housing, and luxury apartment homes. We provide flexible lease terms from one month to one year with a strong focus on customer service.

Millview Apartment Homes

100 Cobblestone Dr., Coatesville, PA 19320
 (610) 466-7800; Fax: (610) 466-7900
 E-mail: millviewleasing@vzavenue.net. Millview Apartment Homes boasts contemporary designs, bright spacious floor plans, high ceilings, creative detail and unique style offering you an elegant new way of living.

Staybridge Suites by Holiday Inn

20 Morehall Rd., Malvern, PA 19355
 (610) 296-4343; Fax: (610) 296-3942; www.staybridge.com/malvern
 E-mail: michelle.lyden@ichotelsgroup.com. Easily accessible off Rte.202 in Malvern; One, two bedroom suites, full kitchens, spacious living rooms; Complimentary daily breakfast buffet; Two outdoor barbecue areas, pool in our courtyard; Ideal for families.

Strasburg Court Apartments

1201 E. Strasburg Rd., Apt C-1, West Chester, PA 19380
 (610) 430-2250; Fax: (610) 430-2016
 www.strasburgcourtapartments.com
 E-mail: strasburgcourt@aol.com. Welcome home to Chester County's best-kept secret celebrating 35 years. Just outside of historic West Chester, our apartments surround a beautiful courtyard setting. Apartment award winner and family owned!

Thomas Meeting Apartments

279 Lindenwood Dr., Exton, PA 19341. (610) 363-9696
 Fax: (610) 594-0675; E-mail: manager@thomasmeeting.com
 We have a wide selection of one, two and three bedroom apartments and rental townhouses in the heart of Exton in beautiful Chester County.

Windsor at Windermere Place

1500 Windermere Rd., West Chester, PA 19380. (610) 692-3060
 Fax: (610) 692-7384; www.windsorcommunities.com/windermere
 E-mail: windermere@windsorcommunities.com. A rare gem situated in one of Chester County's most desirable neighborhoods. Over 30 acres of sprawling greenery surround these exceptional apartment homes. Welcome Home!

Woodbridge Place Apartments

1191 Rapps Dam Rd., Kimberton, PA 19442
 (610) 933-7000; Fax: (610) 933-7088
 www.newtonseniorliving.com. 90 private apartments, (separate wing for residents with memory impairments) offering an array of independent and assisted living services with 24-hour staff; personal care assistance to stimulating activities and fitness programs to great food!

CAMPING

Berry Patch Campground

RD #2, PO Box 370, Honey Brook, 19344. (610) 273-3720
 Fax: (610) 273-7318; www.berrypatchcampground.com
 E-mail: info@berrypatchcampground.com. 84 sites just off Rte. 10; showers, pool, playground, fishing, recreation hall! Call for information.

Brandywine Meadows Campground, Inc.

429 Icedale Rd., Honey Brook, PA 19344
 (610) 273-9753; Fax: (610) 273-9570.
 Quiet sites on the west branch of the Brandywine Creek; 20/30/50 amp sites, situated amongst oak trees; Pools, playgrounds, ball field, basketball, mini golf, cabin rental.

Chester County Parks & Recreation

601 Westtown Rd., Suite 160
 West Chester, PA 19382
 (610) 344-6415
 www.chesco.org/ccparks
 Hibernia County Park, Wagontown, 20 sites. (610) 384-0290
 Nottingham County Park, Nottingham, 35 sites. (610) 932-9195

Philadelphia/West Chester KOA

PO Box 920, Unionville, PA 19320
 (610) 486-0447; Fax: (610) 486-1070
 www.philadelphiakoa.com; E-mail: philadelphiakoa@mykoa.com
 Spread along the banks of the Brandywine River, KOA enjoys a rural setting near many attractions. Amenities include 50 amp RV sites, kabins, riverside tenting and Philadelphia guided tours.



THE INN AT Whitewing Farm
 A BED & BREAKFAST

*Located Adjacent to Longwood Gardens in the heart of the Brandywine Valley
 P.O. Box 98, Kennett Square, PA • www.whitewingfarm.com • (610) 388-2664*

Elegant accommodations abound in this 1700's Pennsylvania farm house, featuring private baths, fireplaces, and spectacular views. A tennis court, swimming pool and jacuzzi, as well as a 10 hole chip and putt course offer plenty of on-site activities. Don't just spend the night . . . spend the weekend.

Windsor At Windermere Place
 All the Conveniences You Want and the Luxuries You Deserve!

- Located Near Philadelphia, King of Prussia and Delaware
- Clubhouse and Fitness Center
- Swimming Pool and Spa
- Fireplaces Available
- Washer and Dryer in Every Unit
- Garages Available
- 1, 2, and 3 Bedroom Apartment Homes
- Short term Corporate Housing and Long Term Leases
- Furnished and Unfurnished Available
- Flexible Lease Terms
- 24 Hour Maintenance
- Exceptional Staff to Cater to your Every Need!

Call 610.692.3060 for more information and Schedule a tour or Visit us online at WWW.WINDSORCOMMUNITIES.COM/WINDERMERE

1500 Windermere Road, West Chester, Pa 19380



EXTENDED/SHORT STAY

Cornerstone Cottages

300 Buttonwood Rd., Landenberg, PA 19350
 (610) 274-2143; Fax: (610) 274-0734; www.cornerstoneinn.net
 E-mail: info@cornerstoneinn.net Short term living with all the comforts of home. Daily, weekly and monthly rates; one and two bedroom cottages, fully equipped kitchens, linens, pet friendly, cable TV, high-speed internet.

Extended Stay America Exton

877 N. Pottstown Pike (Rte. 100) Exton, PA 19341
 (610) 524-7185; Fax: (610) 524-7195; www.extay.com
 From I-276 (PA Tpke) take Exit 23 (Rte. 100/N. Pottstown Pike) South. Travel 2 miles to the jughandle at Gordon Dr. Take the jughandle, turning left onto Rte. 100 North-We're on the right.

Extended Stay America Great Valley

300 Morehall Rd., (Rte. 29) , Malvern, PA 19355
 (610) 240-0455; Fax: (610) 240-0456. Extended Stay America— Spacious Studio Suites with fully equipped kitchens. Suites include refrigerators, two-burner stoves, microwave ovens, irons and ironing boards. Suites have well lit workspace and comfortable recliners.

Hamanasset Bed & Breakfast and Carriage House

Chester Heights/Chadds Ford Area. (610) 459-3000
 Reservations: (800) 836-8212; www.hamanasset.com
 E-mail: Ashleycc@hamanasset.com. Large two-story/2 bedroom carriage house with fully furnished kitchen, fenced yard, cable TV, pet and child friendly; Only 20 min to Philadelphia airport and Wilmington, DE; 2 night min. Daily, weekly, monthly rates.

Tree Top Suite

112 West State St., Kennett Square, PA 19348
 (610) 444-8484; Fax: (610) 444-8260; www.treetopsuite.com
 This fully furnished 2 BR apartment is available nightly, weekly or monthly in historic downtown Kennett Square. Free parking, walk to shops and restaurants. Major credit cards accepted.

RETREAT CENTERS

Temenos Conference & Retreat Center

1564 Telegraph Rd., West Chester, PA 19382
 (610) 696-8145; Fax: (610) 696-7335; www.temenosretreat.org
 E-mail: information@temenosretreat.org. 30-bed retreat facility offers modern and historic rooms with A/C, meeting space for 60, walking trails, garden patio. Call about group rentals and personal growth programs.

eat out

There is a wide variety of upscale or casual restaurants to choose from in the Brandywine Valley. Freshly prepared meals, intimate atmospheres, attentive service and an exciting nightlife are just a few reasons to experience our local eateries. Specials are prepared daily by local chefs with some involving the local mushrooms the area has to offer including shiitake, portabella and button mushrooms. With so many restaurants to choose from, don't miss out on lunch or dinner in a historic building by a cozy fireside.

AMERICAN CUISINE

Applebee's Neighborhood Grill & Bar—Kennett Square

815 Baltimore Pike (Rte. 1), Kennett Square, PA 19348
 (610) 444-8092. Located only one mile from Longwood Gardens on Rte.1, Applebee's features generous portions of the foods you crave in a friendly, relaxed atmosphere while offering passionate service.

Applebee's Neighborhood Grill & Bar—Exton

470 W. Lincoln Highway, Exton, PA 19341
 (610) 363-5266; Fax: (610) 363-6605. Located only a few minutes from the Turnpike on business Rte.30, Applebee's features generous portions of the foods you crave in a friendly, relaxed atmosphere while offering passionate service.

**Arthur's Restaurant & Bar
 (In The Inn at Chester Springs Hotel Conference Ctr.)**

815 N. Pottstown Pike (Rte. 100 & Gordon Dr.), Exton, PA
 (888) 258-6119; (610) 363-1100; www.innatchestersprings.com
 Award winning restaurant featuring American cuisine in a relaxed atmosphere; Expanded breakfast buffet each morning and nightly dinner specials. B,L,D, MCC, HCA.

Ball & Thistle Pub

50 Wyncote, Oxford, PA 19363
 (610) 932-8900; www.wyncote.com; E-mail: dining@wyncote.com
 Offers casual, family friendly dining in our beautiful new clubhouse overlooking our award-winning Scottish golf course. Specialties include choice cuts of beef, fresh seafood and delicious chef's specials; Banquet and meeting facility for up to 150. L,D,MCC,HCA.

Baxter's Restaurant

40 E. Market St., West Chester, PA 19382
 (484) 631-0241. Daily specials. American fare. Upstairs and downstairs. Comfortable, classy atmosphere.

Buckley's Tavern

5812 Kennett Pike, Centerville, DE 19807
 (302) 656-9776; Fax: (302) 656-9752; www.buckleystavern.net
 Beginning as an ice cream store in the 1930s, Buckley's Tavern has been a favorite gathering spot for its food, spirits and outdoor dining for over 70 years. Fine dining and casual atmosphere.

Chadds Ford Tavern

96-A Baltimore Pike, Chadds Ford, PA 19317
 (610) 459-8453; www.chaddsfordtavern.com
 A quaint, cozy, country tavern for fine dining and light fare. Open 7 days a week for lunch and dinner. Serving breakfast on Sundays 9 am -12 noon.

Chumley's Steakhouse

(At the Radisson Valley Forge Hotel)
 1160 First Ave., King of Prussia, PA 19406
 (610) 337-2000; (888) 267-1500; Fax: (610) 768-0183
 www.radisson.com/kingofprussia

The Farmhouse Restaurant at Loch Nairn

514 McCue Rd., Avondale, PA 19311
 (610) 268-2235; Fax: (610) 268-8253
 www.lngolg.com; E-mail: info@lngolf.com
 Renovated 17th century farmhouse nestled in country gardens; Unique, interesting ambience. Underground root cellar houses unique wine cellar with chef's table. Out-door dining in season overlooking country gardens and golf course.



**NEW – FPO
 To Be Scanned
 95%**

PRINTER TO DISCUSS WITH CCVB

216 Beautifully App...
 Restaurant and Ba...
 Studio Tour, Longwo...
 to 400 people · Arthur's
 Valley Attractions (QVC
 ed one mile south of Exit

The Inn at Chester Springs
 815 N. Pottstown Pike (at Gordon Drive) · Exton, PA
 Tel: 610.363.1100 · Fax: 610.524.2329
 Toll Free: 888.253.6119
 Web: www.innatchestersprings.com E-mail: hotel_info@innatchestersprings.com



Four Dogs Tavern

1300 Strasburg Rd. (Rte. 162), West Chester, PA 19382
(610) 692-4367; Fax: (610) 738-1206; www.marshaltoninn.net
Casual dining, eclectic menu, full bar; Huge, secluded outdoor patio; Live music Thursdays and Sundays. Open 7 days, lunch, dinner and Sunday Brunch; Dog and Kid friendly; A howling good time!

Hank's Place

Rts. 1 & 100, Chadds Ford, PA 19317
(610) 388-7061. Overlooking picturesque Brandywine River, this charming little diner is the place where local artists and folks meet. Daily: B,L,D. \$\$.

Harry's Savoy Grill & Ballroom

2020 Naamans Rd., Wilmington, DE 19810
(302) 475-3000; Fax: (302) 475-9990; www.harrys-savoy.com
E-mail: Tinadowell@Harrys-Savoy.com. Casual fine dining featuring award winning prime rib, fresh creative seafood and chef's tastings; Fireplaces, cozy booths, courtyard dining. Wine Spectator award winning list, private dining up to 300. L,D,R, MCC,HCA.

Iron Hill Brewery & Restaurant

3 West Gay St., West Chester, PA 19380
(610) 738-9600; Fax: (610) 738-7240; www.ironhillbrewery.com
Award-winning handcrafted ales and lagers served in festive atmosphere; gourmet pizzas, fresh grilled fish and meat entrees, sandwiches/salads. Sun brunch and prime rib dinner, separate bar, live entertainment. Open 7 days.

Isaac's Restaurant & Deli

The Commons at Thornbury, 1211 Wilmington Pike, West Chester, PA 19382
(610) 399-4438; Fax: (610) 399-6113
www.isaacsdeli.com; E-mail: th@isaacsdeli.com. Award-winning bird-themed restaurant with 3 locations in Chester County, serving grilled sandwiches, healthy wraps, savory soups and delectable desserts that are always fresh, always fun! Dine-in, take-out, catering and great kids' menu!

Kennett Inn

201 E. State St., Kennett Square, PA 19348
(610) 444-5688; Fax: (610) 444-4904; www.kennettinn.com. Enjoy fine dining by the fireplace in a quiet colonial inn built in 1835; tavern menu also for folks on the fly; in the heart of Kennett Square, one mile south of Longwood Gardens. L,D,R, MCC, HA.

Kennett Steak and Mushroom Restaurant and Motel

201 Birch St., Kennett Square, PA 19348
(610) 444-5085; www.kennettsteakandmushroom.com. Serving fine beef and exotic mushrooms in a stunning, yet lively, atmosphere with ample free parking. We also offer 13 comfortable guest rooms with wireless internet access and remote TV.

Krazy Kats

Rte. 100 & Kirk Rd., Montchanin, DE 19710
(302) 888-4200
Located at the Inn at Montchanin Village.

Manny Hattans Restaurant

847 E. Baltimore Pike
(Shoppes at Longwood Village)
Kennett Square, PA 19348
(610) 444-9611; Fax: (610) 388-9470; www.mannyhattans.net
Offering excellent food (American/Continental) steaks and ribs to sandwiches, wings, pizza in a casual, family atmosphere; Non-smoking back dining room and bar/cocktail area. Take out available, open 7 days.

The Marshalton Inn

1300 Strasburg Rd., (Rte. 162)
West Chester, PA 19382
(610) 692-4367; Fax: (610) 738-1206; www.marshaltoninn.net
Fine dining in an historic country inn. Classic and Contemporary Cuisine; Candlelight, fireplaces. Chester County's most intimate romantic bar; Banquet facilities and outdoor dining in the Courtyard Patio. Dinner only, Wed thru Sun.



For local color, homestyle cooking, and fast and courteous service, visit **Hank's Place in the heart of Wyeth Country**

Its old fashioned homestyle breakfasts, luncheons, and early dinners are the biggest bargain around.

Stop in and try our breakfast specials; you'll see why Hank's is the locals' favorite way to start the day and why Gourmet Magazine wrote in December 1993:

"Leaving the museum, I crossed the road to **HANK'S PLACE**. The tables are usually packed; so is the counter, where owners of attaché cases and carpenters' belts sit companionably side by side, attacking pancakes or chipped beef on fluffy biscuits. I go to Hank's Place for the upscale *shiitake* omelet—three eggs and a generous handful of succulent mushrooms, earthy, rich, and melting—simultaneously a breakfast standard and a tour de force served throughout the day."

HANK'S PLACE

where art, good old fashioned food and history meet.

At the crossroads of U.S. Rt 1 & Rt 100 within Chadds Ford, PA
Across from the Brandywine River Museum

Call (610) 388-7061

Open Monday, 6 AM - 4 PM. Tues.-Sat. 6 AM - 7 PM,
and Sundays 7 AM - 3 PM.



Newton's on State Street

114 E. State St.
Kennett Square, PA 19348
(610) 925-5055; Fax: (610) 925-5056
www.newtonsonstatestreet.com
E-mail: newtons_on_state_street@verizon.net
Upscale-casual and Family friendly. Newton's On State Street is open for lunch and dinner Monday thru Saturday and Brunch on Sundays. Happy Hour M-F 4:30 to 6:30 pm. Live Music every Saturday night.

Pace One Restaurant

341 Thornton Rd.
Thornton, PA 19373
(610) 459-3702; Fax: (610) 558-0825
www.paceone.net
Pace One Restaurant offers country imaginative cuisine in a magnificently restored 1740s stone barn. Unique meeting and banquet facilities as well as excellent off premise "Brandywine Catering" are a specialty.



Roux 3

4755 West Chester Pike (next to Edgemont Regal cinemas)
Newtown Square, PA 19073
(610) 356-9500; Fax: (610) 356-6582; www.roux3.com
E-mail: info@roux3.com. Contemporary American Cuisine by Chef Owner Michael O'Hare inspiring the senses and indulging the palate with dishes like "Free Range" Chicken, and tuna arriving daily from Hawaii within 24 hours of being caught.

Ryan's Pub

124 W. Gay St., West Chester, PA 19380
(610) 344-3934. Try Ryan's Flatbread appetizer or some of their outstanding pub entrees like the Seafood Diablo or their Shepherd's Pie.

Simon Pearce on the Brandywine

1333 Lenape Rd., West Chester, PA 19382
Restaurant: (610) 793-0948; Retail: (610) 793-0949
www.simonpearce.com
E-mail: customerservice@simonpearce.com. Observe traditional glassblowers at work and enjoy creative American cuisine at the restaurant overlooking the Brandywine River. All meals are served on Simon Pearce glass and pottery. MCC, L, D.

State Street Grille

115 W. State St., Kennett Square, PA 19348
(610) 925-4984; Fax: (610) 925-4986; www.statestreetgrille.com
E-mail: StateStGrille@aol.com. Award winning BYO in the heart of historic Kennett Square; New American menu offers many inspiring as well as classical dishes. Open, energetic kitchen! Special three-course price-fixed menus available.

The Terrace Restaurant at Longwood Gardens

Rte.1, Kennett Square, PA 19348
(610) 388-6771. Located in the Gardens we offer full-service dining and a self-service café, extraordinary culinary team and fresh local ingredients. Come indulge in an exquisite dining experience with impeccable service. Dress is casual comfortable.

The White Horse Restaurant

707 Lancaster Ave., Frazer, PA 19355
(610) 280-2580; E-mail: ann.slawko@ihrco.com
Historic 18th Century farmhouse, featuring Steak & Seafood specialties. 5 Private Rooms seat 10-40 guests. Breakfast, Lunch & Dinner; Casual dining Fireside in the bar; Chesterfields Lounge; Gift certificates available.

Wyncote Golf Club

50 Wyncote Dr., Oxford, PA; 19363
(610) 932-8900; Fax: (610) 932-8197; www.wyncote.com
E-mail: wyncote@wyncote.com. The Restaurants at Wyncote Golf Club have sweeping views of our award-winning golf club; Chef specials nightly featuring Italian and Latin American influences.



BREWERIES

Iron Hill Brewery & Restaurant

3 West Gay St., West Chester, PA 19380
(610) 738-9600; Fax: (610) 738-7240; www.ironhillbrewery.com
Award-winning handcrafted ales and lagers served in a festive atmosphere; gourmet pizzas, fresh grilled fish and meat entrees, sandwiches and salads. Sun brunch and prime rib dinner, separate bar, live entertainment. Open 7 days.

CATERING

Robert Ryan's Columbia Station Catering.

4 Bridge St., Phoenixville, PA 19460
(610) 933-6336; Fax: (610) 933-4774; www.weddingcaterer.com
E-mail: rrcatering@bee.net. Robert Ryan Catering can make any event unforgettable. Historic Columbia Station features a restored caboose and garden ceremony area and offers elegant settings, outstanding cuisine and impeccable service.

CONTINENTAL CUISINE

Chadds Ford Tavern and Restaurant

96A Baltimore Pike, Chadds Ford, PA 19317
(610) 459-8453; Fax: (610) 459-9485; www.chaddsfordtavern.com
A quaint, cozy, country tavern for fine dining or lite fare; Family owned and operated for 35 years. Open for lunch or dinner. Reservations suggested but not necessary. MC/VISA, HCA.

Concordville Inn

Rte. 322 & Rte. 1, PO Box 607, Concordville, PA 19331
(610) 459-2230; www.concordville.com
E-mail: bestconcor@aol.com. Historic "1777" Inn with delicious cuisine in a comfortable, country inn setting; superb service, private dining rooms for groups, L,D, family night menus @ \$16.95 W, F, Sun.

Dilworthtown Inn

1390 Old Wilmington Pike, West Chester, PA
(610) 399-1390; Fax: (610) 399-1504; www.dilworthtown.com
Circa 1754. Meticulously restored 1754 Inn "Serving steady and perfect new American fare in romantic setting, with world class wine cellar."—The Zagat Guide. Alfresco dining in "The Stables" with live music on the Weekends. D \$\$\$\$.

Duling-Kurtz House & Country Inn

146 Whitford Rd., Exton, PA
(610) 524-1830; www.dulingkurtz.com. Experience romantic candlelight dining in beautiful 1830 farmhouse. Continental and American cuisine featuring Rack of Lamb, Chateaubriand for Two and Seafood Specialties with extensive wine list. Bar. Charming guest rooms. L,D, MCC, private parties.

Historic General Warren Inne

Old Lancaster Highway, Malvern PA 19355
(610) 296-3637; www.generalwarren.com
E-mail: info@generalwarren.com
Award-winning continental cuisine; Four candlelit dining rooms with working fireplaces, attentive service and Old-World charm; Table-side specialties at Dinner; Outdoor dining, private rooms; Corporate parties, intimate weddings, receptions, rehearsals. L,D, \$\$\$\$.

Mendenhall Inn

Rte.52, PO Box 208, Mendenhall, PA 19357
(610) 388-1181; www.mendenhallinn.com; E-mail: hionis@aol.com
Historic "award winning" fine dining restaurant; Cozy and intimate lounge with fireplace and candlelit dining; spectacular new menu offering delicious food and impeccable service; lunch and dinner, Champagne Sunday Brunch.

Palette's Restaurant and Lounge—Doubletree Hotel

4727 Concord Pike, Wilmington, DE 19803
(302) 478-6000. Continental menu and eclectic decor; serving breakfast, lunch and dinner. Happy Hour Mon-Fri; Room Service also available.

Enjoy Applebee's great food whenever and wherever you are hungry. Request Carside Service when you call in your To Go order, and we'll bring the food right to your car. It's fast, convenient and easier than unbuckling your seat belt.

KENNETT SQUARE	EXTON
815 E. Baltimore Pike (1 mile from Longwood Gardens)	470 W. Lincoln Highway (Business Route 30)
(610) 444-9886	(610) 363-2503

The Ship Inn

Rte.30 & Ship Rd., Exton, PA 19341
(610) 363-7200; (800) 515-8535; Fax: (610) 363-3509. Specialty seafood and steak entrees: Surf & Turf, Crab Imperial and Roquefort Steak; intimate formal atmosphere or casual dining in the Grill; Bar, Happy Hour, outdoor patio, gift certificates. L,D, MCC, private parties.

Stottsville Inn

3486 Strasburg Rd. (PO Box 6), Pomeroy, PA 19367
(610) 857-4090; Fax: (610) 857-4722; www.stottsville.com
E-mail: info@stottsville.com. Elegantly renovated featuring continental cuisine, the restaurant includes the busy Bee Pub and three elegant dining rooms. It also has a heated outdoor patio and eight guest suites.

Vickers Tavern

Corner of E. Welsh Pool Rd. & Gordon Dr., Exton, PA 19341
(610) 363-7998; Fax: (610) 524-2445; www.vickerstavern.com
E-mail: info@vickerstavern.com. Historic C.1820 farmhouse; relaxed and cozy, featuring creative, continental cuisine and savory daily specials; Live piano Fri-Sat, happy hour Mon-Fri. Outdoor patio, private parties, wedding receptions, purchase gift certificates on line.

PENNSBURY-CHADDS FORD
640 East Baltimore Pike, Chadds Ford, Pennsylvania, 19317 (610) 388-1620

ANTIQUE MALL
Quality Antiques & Collectibles

Victorian • Country • Mission • Deco: Furniture, Jewelry, Silver, Prints, Coins, Toys, Military, Pottery, Ceramics, Glass, Rare Books, Ephemera, Original Art, Quilts, Rugs, Linens

Ample Parking • Air Conditioning

Dealer Inquiries Invited!
Upper Level: (610) 388-1620
Lower Level: (610) 388-6546

HOURS - 10AM TO 5PM
Upper level - Thursday - Monday
Lower level - Saturday & Sunday

Located on Rte. 1 between Longwood Gardens and the Brandywine River Museum.

CREATIVE CUISINE

Downingtown Country Club

150 E. Pennsylvania Ave., Downingtown, PA
(610) 873-9870; www.golfdowntown.com. Open to the public, a new full service restaurant, featuring mezzanine, grille bar, outside deck dining, adjoining elegant 400 seat banquet facility and grand staircase gallery lobby. Daily B,L-\$\$, D-\$\$\$\$.

FRENCH

Green Room at the Hotel du Pont

11th & Market Sts., Wilmington, DE 19081
(302) 594-3154; www.hoteldupont.com. For dramatic dining in a spectacular setting, the historic Green Room serves French Continental cuisine with an international flair.

Gilmore's Restaurant

133 E. Gay St., West Chester, PA 19380
(610) 431-2800; Fax: (610) 431-9464; www.gilmoresrestaurant.com
E-mail: peter@gilmoresrestaurant.com. An intimate historical townhouse is a lovely background for a classic French menu served with a contemporary flair by a warm and friendly staff. BYOB.

ITALIAN

Hugo's Inn

940 E. Baltimore Pike, Kennett Square, PA 19348
(610) 388-1144; Fax: (610) 388-3127 E-mail: hrmaucher@aol.com
Located across from Longwood Gardens on U.S. Rte.1, close to the Mushroom Capital of the World! Serving the best in Italian-American cuisine, steaks and seafood, and featuring world-famous mushroom specialties.



retail therapy



The historic main streets of West Chester, Kennett Square and Phoenixville are great spots to shop. You'll find all sorts of stores you won't find anywhere else. And outside the boroughs, shops line the valley in every direction. If you're looking for a major mall, they're easily accessible, too, like Exton Square or King of Prussia Mall. Experience retail therapy the Brandywine Valley way.

ANTIQUES & COLLECTIBLES

Acorn Cottage Style

14 W. Gay St., West Chester, PA 19380
(610) 430-3316; Fax: (610) 430-7860
E-mail: acorncottage@verizon.net. Located in Historic West Chester, specializes in Oriental carpets, 18th-20th century furniture, antique and contemporary Art. Winner, Best of Philly. Open 10 am-5 pm Tues-Wed; 10 am-9 pm Thurs-Sat; 10 am-5 pm Sundays.

Olivier Fleury, Inc.

57 West Lancaster Ave. Malvern, PA 19355
(610) 722-5900; Fax: (610) 722-5988; www.ofleury.com
E-mail: ofleury@comcast.net. A large selection from the last 3 centuries of French and English Antiques in a 8500 sq ft showroom; minutes from Rte. 202, Exit 29 S. to Rte. 30 W, 1/10 mi on right.



ACORN COTTAGE ART ANTIQUES INTERIOR DESIGN

Style

14 WEST GAY STREET, WEST CHESTER, PENNSYLVANIA 19380
610-430-3316 TUES-WED 10-5, THURS-SAT 10-9, SUN 10-5

Pennsbury-Chadds Ford Antique Mall

640 E. Baltimore Pike, Chadds Ford, PA 19317
(610) 388-1620 or (610) 388-6546. More than 100 dealers offering quality antiques and collectibles, including furniture, jewelry, silver, books, coins, linens, ephemera, pottery, glass, original art, quilts, military, rugs, toys and signed Wyeth prints.

Twice Nice Antiques & Collectibles

5714 Kennett Pike (Rte. 52), Frederick's Country Center
(1 mi N. of Winterthur), Centreville, DE 19807-1331
(302) 656-8881. Hand refinished pre-owned furniture, antiques and accessories. Furniture refinishing. Celebrating our 21st year. VISA, MC, AX, Discover. Mon-Sat 10 am-4:30 pm.

White Horse Mill Antiques

107 Cambridge Rd., (Rte. 340 in White Horse, 2 mi W. of Rte. 10) Gap, PA 17527. (717) 768-0960. Located in a historic 18th Century Grist Mill, 45 dealers offer quality antiques and collectibles including period furniture, woodenware, metalware, ceramics, textiles & glass. No crafts or reproductions. Real antiques.

BOOKS

Baldwin's Book Barn

865 Lenape Rd. (Rte. 52), West Chester, PA
(610) 696-0816; Fax: (610) 696-0672; www.bookbarn.com
E-mail: info@bookbarn.com. Rustic charm in an 1822 stone bank barn. 300,000 volumes of used and rare books, maps, prints, paintings. For over 70 years one of America's truly distinctive bookstores. Mon.-Fri. 9 am-9 pm, Sat/Sun 10 am-6 pm.

RLD Books

111 S. Union St., (Rte. 82) between State & Cypress, Kennett Square, PA 19348
(610) 444-8334; E-mail: rldbooks@dplus.net. Specializing in modern literature, poetry, travel, art photography, children's and other interesting books; also watercolors and ceramics.

Thomas Macaluso Used & Rare Books

130 S. Union St. (Rte. 82), Kennett Square, PA 19348
(610) 444-1063; Fax: (610) 925-1969
E-mail: macaluso@kennett.net. One block S. of State St. (Old Baltimore Pike), 2 mi W. of Longwood Gardens. 25,000 volumes, all subjects and price ranges. 1,000s of old maps, prints in 6 charming showrooms. Mon-Fri 11:00 am-6 pm. Sat 11 am-5 pm, or appointment/chance.

COUNTRY STORES/ FARMER'S MARKETS

Hershey's Farm Market

959 S. Octorara Trail (Rte. 10), Parkesburg, PA 19365
(610) 857-5053; Fax: (610) 857-5618
www.HersheysFarmMarket.com
E-mail: FarmFresh@HersheysFarmMarket.com. Located on Rte. 10, a quarter mile South of Rte. 30; Fresh quality meats and seafood, daily produce and bakery, Amish-made furniture and crafts; Old Fashioned PA Dutch tradition. Open Mon-Sat, 9 am-7 pm.

Parkesburg Country Store & Ice Cream Parlour

221 Main St., Parkesburg, PA 19365
(610) 857-1252; Fax: (610) 857-1252
www.parkesburgcountrystore.com. E-mail: alsolesjr@bee.net. In the Historic Main Street District of Parkesburg, the Country Store features custom florals, lampshades, antiques, Yankee candles and country furniture. The Ice Cream Parlour features ice cream treats, candy and light lunches.

Phoenixville Farmers Market

2432 Charlestown Rd., Phoenixville, PA 19460
(610) 933-0486; www.PhoenixvilleFarmersMarket.org
E-mail: broadwaterfarm@mac.com. Located at the historic Foundry where high quality fresh local produce is sold; Weekly music and children's activities. Special festivals listed on our website. Open Saturday, 9am to 1pm, June thru Nov.

Northbrook Country Market

6 Northbrook Rd., West Chester, PA 19382
(610) 793-1210; Fax: (610) 793-9293. A country market in an historic old barn featuring fresh baked pies, apple cider donuts, specialty foods and cheese, and local produce in season. Open 7 days, 6:30 am-6:30 pm.

CRAFTS & TEXTILE ART

Mykonos

Glen Eagle Square, PO Box 355, Chadds Ford, PA 19317
(610) 558-8000. One of the most unusual shops in the Brandywine Valley, Mykonos features an extensive kaleidoscope collection; original jewelry, glass and pottery, hand-crafted in the USA; gift items; clothing in a full range of sizes.

Simon Pearce on the Brandywine

1333 Lenape Rd., West Chester, PA 19382
Restaurant: (610) 793-0948; Retail: (610) 793-0949
www.simonpearce.com; E-mail: customerservice@simonpearce.com
Observe traditional glassblowers at work, browse in the store, enjoy creative American cuisine at the restaurant overlooking the Brandywine River. All meals are served on Simon Pearce glass and pottery. MCC, L, D.

FURNITURE

McLimans Fine Used Furniture & Antiques

940 W. Cypress St., Kennett Square, PA 19348
(610) 444-3876; Fax: (610) 444-2104; www.McLimans.com
E-mail: McFurniture@aol.com. 13,000 sq. ft. of fine used/antique furniture, 19th & 20th C. Formal, primitive, Victorian; high-end reproduction. See us first, we are the alternative to new. Since 1976.

GALLERIES & STUDIOS

Beresford Gallery

17 Buffington St., Box 35, Unionville, PA 19375
(610) 347-1247; Fax: (610) 347-1249; www.beresfordgallery.com
E-mail: e.w.beer@att.net. Sporting Art featuring equine and canine works; Private commissions of man or beast, Necessities of country life; Custom French wrought iron.

Cenzia Arts & Gifts

121 N. State St., Kennett Square, PA 19348
(610) 444-9255; Fax: (610) 444-9307; E-mail: cenziagifts@aol.com
A contemporary craft gallery featuring functional art and gifts of uncommon style and substance. Call for hours.

Farmers Market



Artisan breads,
Amish cheeses,
organic produce,
fresh cut flowers...

these are just some of the gems you will find at our Chester County Farmers Markets. We have adopted a slogan in the Brandywine Valley that says it all, "buy fresh, buy local." During your visit, we hope you will taste our local flavors by going out and visiting our Farmers Markets and filling your shopping bags with our gourmet treats. We specialize in a "local growers only" philosophy, which supports our local farmers and helps to ensure that they will be sustainable.

Historic Kennett Square, PA

Every Friday, from 2 pm - 6 pm
May - November

West Chester, PA

Every Saturday, from 8 am - 1pm
May - December



Chadds Ford Gallery, Inc.

1609 Baltimore Pike, (Rte. 1) Chadds Ford, PA 19317
 (610) 459-5510; Fax: (610) 388-3482; www.awyethgallery.com
 Barbara J. Moore, Director. Specializing in Wyeth (N.C., Andrew, Jamie) Featuring originals and signed limited editions by Regional, National and International artists; Three major exhibits a year, Custom Framing, Wyeth appraisals. Est. 1969.

Creations Fine Woodworking Gallery

451 Hockessin Corner, Hockessin, DE 19707
 (302) 235-2310; www.creationsgallery.com
 E-mail: jws@creationsgallery.com. Unique fine craft gallery specializing in wood, contemporary works of over 150 American and Australian artisans, unusual gifts, furniture, furnishings for home and office.

Dragonfly Gallery

29 S. High St., West Chester, PA 19382
 (610) 692-2560; Fax: (610) 692-3607; www.thedragonflygallery.com
 The mission at this progressive gallery remains unchanged since its inception; we continue to discover, cultivate and present exceptional new talent, each creating individual cutting edge designs for body, garden and home.

The Gallery at Cedar Hollow & The Olde General Store

2447 Yellow Springs Rd., Village of Cedar Hollow, Malvern, PA 19355
 (610) 640-ARTS; (610) 647-8968; Fax: (610) 640-2332
 E-mail: rbfinkel@erols.com. www.hometown.aol.com/rbfinkel/myhomepage/collection.html@aol.com. Shop for unique crafts, fine art, folk art, and antiques in our village. A place where visitors, tourists and shoppers seek wonderful handcrafted treasures to collect. Call for hours.

Garrubbo Bazan Gallery

16 West Market St. (across Historic Court House) West Chester, PA 19382. (610) 696-1266; www.gbgfineart.com
 A Fine Arts Gallery in Historic West Chester focusing on contemporary painting, sculpture and photography from around the world, in an atmosphere that is inviting for both first-time and seasoned buyers.

Somerville Manning Gallery.

Breck's Mill, 2nd Fl, 101 Stone Block Row, Greenville, DE 19807
 (302) 652-0271; www.somervillemanning.com
 E-mail: info@somervillemanning.com. A fine arts gallery in historic Breck's Mill specializing in 20th & 21st century art, including the Brandywine School of Illustrators. Works by: N.C. Wyeth, Peter Sculthorpe, J. Clayton Bright, Greg Mort, Jon Redmond.

Visual Expansion Gallery

126 N. High St., West Chester, PA 19380
 (610) 436-8697. Chester County's original gallery exhibiting local and international artists working in a variety of mediums as well as limited editions; Accent on realism!

MALLS & VILLAGES

Exton Square Mall

Rts. 30 & 100, Exton, PA 19341
 (610) 363-2864; Fax: (610) 363-9586
 www.extonsquare.com; E-mail: owenm@preit.com
 The design features of the Exton Square Mall capture the unique beauty and charm of the Brandywine Valley and add to the comfort and ease of the shopping experience with 150+ shops. Mon-Sat: 10 am-9:30 pm, Sun: 11 am-6 pm.

Glen Eagle Square

Rte.202 & Springhill Dr., Glen Mills, PA 19342
 Glen Eagle Square contains a unique collection of stores and specialty shops. It's where you can find name brand fashions, pampered services and one-of-a-kind treasures.

King of Prussia Mall

160 N. Gulph Rd., King of Prussia, PA 19406
 (610) 265-5727; Fax: (610) 265-1640; www.kingofprussiamall.com
 The East coast's largest shopping complex offers eight department stores including Bloomingdales, Nordstrom and Neiman Marcus, over 365 specialty shops and more than 40 restaurants. Mon-Sat: 10 am-9:30 pm; Sun:11-7 pm.



The Shoppes at Brinton Lake Corporate Center

U.S. Rt. 1 & Rt. 322, Concordville, PA
 The Shoppes at Brinton Lake, a lifestyle center, features leading retailers in an open air environment, providing shoppers with a hassle free alternative to regional malls.

SPECIALTY SHOPS

GiggyBites.com

207 Dalmation St., Kennett Square, PA 19348
 (610) 213-8358; www.giggybites.com
 E-mail: giggy@giggybites.com
 GiggyBites are handmade dog treats containing only all-natural ingredients, because your pups deserve the best. Visit our website to order treats for your best friend or your favorite dog lover.

The Growing Tree

114 W. State St., Kennett Square, PA 19348
 (610) 444-8484; www.thegrowingtree.com
 E-mail: growingtree1984@aol.com
 Unique children's boutique est. 1984; baby gifts, christening; toddler 6x-7; great consignments and more; Open 7 days, closed Sundays Jan, Feb, Mar and July. Free parking in rear. Call for hours.

Halladay Florist

29 S. Church St., West Chester, PA 19382
 (610) 696-5200; www.halladayflorist.com
 E-mail: halla@nni.com. In downtown West Chester, located in historic 1800s mansion. Proudly serving Chester County for 45 years. Family owned and operated.

Military History Shop

PO Box 127, Kennett Square, PA 19348. (610) 368-4513
 Pennybury-Chadds Ford Antique Mall, U.S. Rt. 1, Chadds Ford, PA 19317. (610) 368-4513
 History comes alive—a fine selection of unique and imported books, models, miniatures, kits and supplies; exquisite hand-painted soldiers and dioramas. Sat & Sun.

The Mushroom Cap

114 W. State St., Kennett Square, PA 19348,
 (610) 444-8484; Fax: (610) 444-8260; www.themushroomcap.com
 E-mail: themushroomcap@aol.com. Visit downtown Kennett Square and leave with fresh mushrooms, mushroom cookbooks, local souvenirs and other gifts and collectibles. Open seven days except closed Sundays Jan, Feb, Mar and July. Free parking in rear.

Two Moon Junction

1950 E. Lincoln Hwy., Coatesville, PA 19320. (610) 384-8884
 www.2monanimalhouse.org; E-mail: moonanimalhouse@aol.com
 A tiny, eclectic second-hand store benefiting homeless/abused animals carrying a bit of everything, whether you're looking for art work, toys, tools, jewelry, movies, books, toiletries, you'll find it here!!

Waterloo Gardens, Inc.

200 North Whitford Rd., Exton, PA 19341
 (610) 363-0800; Fax: (610) 363-6416; www.waterloogardens.com
 E-mail: info@waterloogardens.com. Locations in Exton and Devon, a full-service garden center and nursery featuring unique plants and gardening supplies offering extensive selection of patio furniture, gifts, collectibles and accents for home and garden.

Wegmans Food Markets

1056 E. Lancaster Ave., Downingtown, PA 19335
 (610) 518-7800; (800) WEGMANS



just in case



If you decide to stay indefinitely you'll find relocation specialists among other businesses in the area. Banking, conference services and other special services await your special needs.

BANKS/FINANCIAL SERVICES

First National Bank of Chester County

9 North High St., West Chester, PA 19380
(484) 881-4103; Fax: (484) 881-4130; www.fnbchestercounty.com
E-mail: Stephanie.giangiulio@fnbchestercounty.com
We have provided quality financial services and customer service excellence to Chester County's residents and businesses for 140 years. Let us service you.

Consumer Mortgage Services, Inc.

999 West Chester Pike, Suite 200, West Chester, PA 19382-4877
(800) 778-9899; (610) 701-9899; Fax: (610) 840-1564
www.consumermortgage.com
E-mail: contact@consumermortgage.com Our mission is to make a difference in people's lives through fulfilling their dream of home ownership and financial freedom. We have been assisting families in Chester County since 1994.

People's Bank of Oxford

900 E. Baltimore Pike, Kennett Square, PA 19348
(610) 444-2000; www.peoplesoxford.com. Since 1913, THE PEOPLES BANK of Oxford has been serving the banking needs of residents in Southern Chester County, Southern Lancaster County and Northern Cecil County. We're local people making local decisions.

CONFERENCE CENTERS/ EVENT FACILITIES

Bank One Center on the Riverfront

800 South Madison St., Wilmington, DE 19801
(302) 425-3929; (888) 862-2787; Fax: (302) 778-1731
www.centerontheriverfront.com
E-mail: info@centerontheriverfront.com. Wilmington's largest venue for meetings, tradeshow, conventions and celebrations; 80,000 sq. ft. of versatile space, spacious meeting rooms, auditorium, 40,000 sq. feet of dedicated exhibit space, two beautifully appointed ballrooms.

The Conference Center at Penn State Great Valley

30 E. Swedesford Rd., Malvern, PA 19355
(610) 648-3209; Fax: (610) 725-5294
www.gv.psu.edu/conferences
E-mail: conferences@gv.psu.edu. Suburban Chester County conference center located in the Great Valley Corporate Center; Contemporary 300 seat, tiered desktop style auditorium with advanced technology and over 25 executive-comfort meeting rooms.

Conference Services at West Chester University

Office of Cultural and Community Affairs
13/15 University Ave., West Chester University
West Chester, PA 19383-7005-004
(610) 436-6931; Fax: (610) 738-0466
www.wcupa.edu/conference.services; E-mail: cfaust@wcupa.edu
A comprehensive, multipurpose institution. Opening our doors for conferences and meetings has become a vital part of our commitment to public service.

The Farmhouse at Great Valley

12 Great Valley Parkway, Malvern, PA 19355
(610) 647-6633; Fax: (610) 647-1104; www.bdtd.com
E-mail: info@bdtd.com. A unique setting for small meetings, retreats, workshops and computer instruction; An 18th century meeting place with 21st century amenities, in the heart of the Great Valley Corporate Center. Convenient parking. Equipment rentals.

Greystone Hall

West Chester, PA 19380.
(610) 696-1272; Fax: (610) 696-0949; www.greystonehall.com
Banquets, receptions, meetings; A stately mansion on a 450 acre country estate offering an elegant alternative setting for meetings and corporate entertainment; special tours.

The Springfield Room at Elverson Fire Co.

25 Hall St., Elverson, PA 19520
(610) 286-5909; Fax: (610) 286-5909; www.elversonfire.com
E-mail: jtrimble@elversonfire.com. Banquet Facility for up to 300 people. Weddings, parties, trade shows, corporate events. Fully operational kitchen (610) 913-0809 Liz Young, Hall Manager.

HOSPITALS

Chadds Ford Animal Hospital

901 Baltimore Pike, Chadds Ford, PA 19317
(610) 388-2141; Fax: (610) 388-9143
www.chaddsfordanimalhospital.com. A small animal hospital which offers medical and surgical services in a newly renovated facility. Boarding and grooming services are also available.

Chester County Hospital

701 East Marshall St., West Chester, PA 19380
(610) 431-5000; www.cchosp.com

MARKETING/COMMUNICATIONS

20/10 Design & Marketing, Inc.

324 Willowbrook Ln., Bldg. 300, West Chester, PA 19382
(610) 692-4972; Fax: (302) 397-2131; E-mail: JPW@2010design.com
Founded in 1998, 20/10 Design has been providing a clearer vision of business by identifying our clients' unique needs and developing tailored media strategies that produce optimal results.

Beacon Technologies, Inc.

112 S. Union St., Kennett Square, PA 19348
(610) 444-9008; (888) 283-4503; Fax: (610) 444-7175
www.BeaconNet.com; E-mail: dgallek@kennett.net
Web design, E-Commerce, Hosting. High speed dedicated access—DSL, ISDN, T1, VPN, Wireless.

CompuSign

1295 Baltimore Pike, Toughkenamon, PA 19374
(610) 268-2290; Fax: (610) 268-8478; www.compuSign.com
E-mail: fran@compusign.com. Let compuSIGN service all your signage and graphic needs.

Creative Strategy Group, Inc.

235 N. Sycamore St., Newtown, PA 18940
(215) 867-0040; Fax: (215) 867-0041; www.csg-design.com
E-mail: info@csg-design.com. We service a wide array of industries including, Pharmaceutical/Healthcare, Biotechnology, Consumer Brands, Financial Services, Real Estate, Technology, Manufacturing and Non-Profit.

Discover Brandywine Valley Public Relations Assn. (DBVPRA)

C/O Longwood Gardens, PO Box 501,
Kennett Square, PA 19348. (610) 388-1000; Fax: (610) 388-2294
www.brandywinetreasures.org; E-mail: smatsen@nemours.org
To increase tourism, community awareness, and attendance to its member cultural attractions through joint promotions and advertising programs.

Network Design and Security, LLC

105 East Rosedale Ave., West Chester, PA 19382-3717
(610) 918-HTTP; (610) 918-4887; Fax (610) 719-9988
www.DesignAndSecurity.com
E-mail: Reagoso@DesignAndSecurity.com. Fully stocked mobile repair units servicing Computers, Networks, and Telephones. Wireless HotSpots and Wired Internet installation in hotels, restaurants, and public places using existing wiring in walls.

NON-PROFIT

Brandywine Health & Wellness Foundation

50 South First Ave., Coatesville, PA 19320
(610) 380-9080; Fax: (610) 380-9081
www.brandywinefoundation.org
E-mail: dheiman@brandywinefoundation.org. Established 2001, the foundation has become one of the community's most active philanthropic organizations and one of the strongest allies of health related agencies in western and central Chester County.

Brandywine Valley Association, Inc.

1760 Unionville-Wawaset Rd., West Chester, PA 19382
(610) 793-1090; Fax: (610) 793-2813
www.brandywinewatershed.org; E-mail: water@bvc-rcva.org
Brandywine Valley Association promotes the conservation of natural resources in the Brandywine Watershed. We offer education programs for school students and adults.

Chester County Gay and Lesbian Alliance

23 S. Main St., Phoenixville, PA 19460
(610) 613-8459; Fax: (610) 983-3395; E-mail: isibill@yahoo.com
We are a non-profit organization that supports and produces an annual event (Pride Day) designed to educate, entertain and help build a strong sense of community among people of diverse sexual orientation.

Downingtown Parks Commission

4 W. Lancaster Ave., Downingtown, PA 19335
(610) 269-0344 x200; Fax: (610) 269-1580; www.downingtown.org
E-mail: jolich679@msn.com

Friends of Martin's Tavern

1400 W. Strasburg Rd., West Chester, 19382. (610) 696-7011
Fax: (610) 388-7554; E-mail: linda.kaat@worldnet.att.net
A group renovating the historic Martin's Tavern in Marshalton.

Yankee Barn Homes

Take in the warmth and beauty of our custom designed timber frame homes. All delivered nationwide.

800.258.9786

visit the brandywine creek house in west chester. open most Sundays from 1-4pm or by appointment during the week. visit our website for directions.

WWW.YANKEEBARNHOMES.COM



Green Valleys Association

1368 Prizer Rd., Pottstown, PA 19465
(610) 469-4900; Fax: (610) 469-4990; www.greenvalleys.org
Dedicated to protecting the five watersheds and their natural resources in Northern Chester Co. We provide technical assistance to residents, organizations and government agencies on issues impacting those resources. Offering educational programs.

Jewish Federation of Greater Philadelphia – Chester County Region

900 West Valley Rd., Suite 804, Wayne, PA 19087
(610) 578-9000; www.jewishphilly.org
E-mail: rrapaport@philafederation.org. Central address for Jewish life in Chester County, providing cultural, educational and recreational services for people of all ages, as well as counseling and other social services for individuals and families.

Natural Lands Trust, Inc.

1031 Palmer's Mill Rd., Media, PA 19063
(610) 353-5587; Fax: (610) 353-0517; www.natlands.org
E-mail: lvanalen@natlands.org. A non-profit land conservancy protecting land in communities throughout the greater Philadelphia region offering a continuum of conservation services including direct land protection through acquisition, conservation easements and helping communities preserve land.

Pennsbury Land Trust

702 Baltimore Pike, Chadds Ford, PA 19317
(610) 388-7401; Fax: (610) 388-6036
www.pennsburylandtrust.org. A non-profit organization that promotes land conservation to protect open space, agriculture, natural and historic resources; We provide professional assistance to landowners who wish to pursue conservation objectives.

Tredyffrin Historic Preservation Trust

PO Box 764, Devon, PA 19333 (location: 100 DuPortail Rd., Berwyn, PA 19312. (610) 408-3625; Fax: (610) 993-9186
www.tredyffrin.org/boards/harb/trust.aspx
E-mail: Elliott@tredyffrin.org. Learn more about local history, architecture and culture. Call or e-mail to join our mailing list. Annual lecture series by noted local scholars benefits the Save the Log Barn Campaign.

YWCA of Chester County

123 N. Church St., West Chester, PA 19380
(610) 692-3737; Fax: (610) 692-5014; www.ywca.org/chestercounty
E-mail: ywacc@comcast.net. The mission of the YWCA is the elimination of racism and the empowerment of women. We offer a variety of programs and events for people of all ages.

OTHER BUSINESSES

Advanced Audio Visual

208 Carter Dr., Suite 7, West Chester, PA 19382
(610) 696-7700; (877) 696-7750; Fax: (610) 430-0653
www.advancedav.com; E-mail: info@advancedav.com
Advanced Audio Visual is a leading provider of presentation technology. Call us if you need to buy audio-visual equipment, rent equipment, stage a special event, or produce an entire multimedia presentation.

Chamber of Commerce of Greater West Chester

2 West Gay St., Suite 200, West Chester, PA 19380
(610) 696-4046; Fax: (610) 696-9110
www.greaterwestchester.com; E-mail: info@gwcc.org. From the thriving streets of Downtown West Chester to the prosperous surrounding communities, our Chamber encourages better business and promotes its members to the community and all who visit.

Charlestown Township

4030 White Horse Rd., PO Box 507, Devault, PA 19432
(610) 240-0326; Fax: (610) 240-0328; www.chalrestown.org
E-mail: admin1@charlestown.pa.us

Chester County Economic Development Council

737 Constitution Dr., Exton, PA 19341
(610) 458-5700; Fax: (610) 458-7770
www.cceconomicdevelopment.com
E-mail: mgrigalonis@cceconomicdevelopment.com
A private, non-profit organization offering a diverse menu of business growth and retention services; also offering brand new conference and training facilities.

Computer Guy, Chris Reagoso

105 E. Rosedale Ave, West Chester, PA 19382-3717
(866) 918-4887; (610) 918-4887; Fax: (610) 719-9988
www.computelco.com; E-mail: service@computelco.com
Fully stocked mobile repair facility; Same day on-site service 24/hours, 7 days a week.

Downingtown Area Chamber of Commerce

38 W. Lancaster Ave., Downingtown, PA 19335. (610) 269-1523
Fax: (610) 269-8713 www.downingtownchamber.org
E-mail: dtownchamber@aol.com. The Downingtown Area Chamber of Commerce is committed to "Business & Community Working Together." Membership Info: (610) 269-1523.

Downingtown Main Street Association

6 West Lancaster Ave., Downingtown, PA 19335
(610) 269-7301; Fax: (610) 518-3347
E-mail: dtownmainstreet@aol.com. A 501(c) (3) organization dedicated to the restoration & revitalization of the Downingtown area to secure a bright future for the Borough and it's residents.

Exton Region Chamber of Commerce

233 W. Lincoln Hwy, 2nd Floor, PO Box 314, Exton, PA 19341
(610) 363-7746; Fax: (610) 363-2374; www.ercc.net
E-mail: chamber@ercc.net. A business association of organizations serving the business center of Chester County and is all about helping members grow their businesses in a growing community.

Great Valley Regional Chamber of Commerce

7 Great Valley Parkway, Malvern, PA 19355
(610) 889-2069; Fax: (610) 889-2063; www.gvrcc.org
E-mail: greatchamber@gvrcc.org

Greater Philadelphia Chamber of Commerce

200 S. Broad St., Suite 700, Philadelphia, PA 19102
(215) 545-1234; (888) 545-GPCC; Fax: (215) 790-3600
www.philachamber.com; E-mail: lhahn@philachamber.com

Iacobucci Homes, A Baker Company

2 EF Raymond Dr., Havertown, PA 19083
(610) 449-6500; www.iacobuccihomes.com
E-mail: amenta@iacobucciorg.com. A residential builder-developer who has been serving the needs of the Delaware Valley for over 50 years!

Main Line Chamber of Commerce

175 Strafford Ave., Suite #130, Wayne, PA 19087
(610) 687-6232; Fax: (610) 687-8085; www.mlcc.org

Oxford Area Chamber of Commerce

23 South 3rd St., PO Box 4, Oxford, PA 19363
(610) 932-0740; Fax: (610) 932-0827; www.oxfordpa.org
E-mail: oxfordchamber@zoominternet.net

Phoenixville Main Street Program, Inc.

30 S. Gay St., Phoenixville, PA 19460. (610) 415-1480. Created to develop a comprehensive revitalization strategy that will stimulate economic development within the context of historic preservation in the downtown commercial district.

Phoenixville Regional Chamber of Commerce

171 E. Bridge St., Phoenixville, PA 19460
(610) 933-3070; Fax: (610) 917-0503
www.phoenixvillechamber.org
E-mail: info@phoenixvillechamber.org. A regional business and civic organization serving Phoenixville and the surrounding areas in Chester, Delaware and Montgomery counties.

Rouse/Chamberlin Homes

500 Exton Commons, Exton, PA 19341
(610) 524-1500; Fax: (610) 524-1268
www.rousechamberlinhomes.com
One of the Delaware Valley's premier homebuilders, building communities of distinction since 1978. "National Builder of the Year" and "America's Best Builder" Awards. Rouse/Chamberlin is committed to "Bringing Neighborhoods to Life."

Turner Construction

1835 Market St., 21st Fl, Philadelphia, PA 19103
(215) 496-8800; Fax: (215) 496-8804
www.turner.com; E-mail: ctamburino2000@aol.com
Business Development.

Western Chester County Chamber of Commerce

50 S. First Ave., Coatesville, PA 19320
(610) 384-9550; Fax: (610) 380-7215; w.westernchestercounty.com
E-mail: info@westernchestercounty.com. WCCCC services the fastest growing area in Chester County by Sharing Resources, Communicating Information & Networking Ideas. Visit us and discover why businesses are looking to the west for future growth.

Yankee Barn Homes

131 Yankee Barn Rd., West Chester, PA 19381
(800) 258-9786; Fax: (610) 344-9619; www.yankeebarnehomes.com
E-mail: info@yankeebarnehomes.com. Yankee Barn Homes has been custom designing and building timber frame homes across the US since 1969. Visit our award winning website to start planning for your home.

PRINTING

Shor and Associates

240 Philadelphia Pike, Wilmington, DE 19809
(302) 764-1701; Fax: (302) 764-1703; E-mail: shor@magpage.com
Full service advertising agency.

Spectrum Printing, Inc.

1160 Enterprise Rd., East Petersburg, PA 17520
(888) 569-9555; Fax: (717) 569-4926; www.spectrumprintpartner.com
E-mail: mikek@spectrumprintpartner.com. Full service commercial printer that puts the emphasis on the customer. Making your business look good is our business.

Taggart Printing Corporation

323 S. Matlack St., West Chester, PA 19382
(610) 431-2500; Fax: (610) 431-0189; www.taggartprinting.com
First times don't have to be tough...call Taggart Printing. For the first time you need professional printing...From the smallest brochure to the largest catalog.

Computer Guy®

On-Site, Same Day Service



COMPUTERS • NETWORKS • TELEPHONE PBX SYSTEMS • INTERNET

ON-SITE SAME DAY SERVICE

1-800-918-HTTP

FAST RESPONSE

Tutoring & Training	High Speed Wired and Wireless Internet for Hotels & Apartments
Upgrades	Networks & Security
Service & Support	Telephone PBX Systems
On-the-Spot Repair	Virus & Spyware Removal
Commercial and Residential	

24 Hours a Day
7 Days a Week **610-918-HTTP**

Winning Concepts

PO Box 133, Birchrunville, PA 19421
(800) 400-3095; Fax: (610) 495-0251; www.premierrecognition.com
E-mail: jeff@premierrecognition.com. Silk screening and embroidery on wearables, tee shirts, golf shirts, jackets and blankets; We will imprint corporate logos on all advertising specialties.

PUBLICATIONS**Mature Living Choices**

1512 West Chester Pike #114, West Chester, PA 19382
(800) 239-6304; Fax: (610) 455-1544; www.livingchoices.com
E-mail: dfrancisco@comcast.net. Free color guide of living choices for 55+ throughout PA, New Jersey and DE. Includes Active Adult and Continuing Care retirement Communities.

Reich and Holton Publishing

320 Joy Ln., West Chester, PA 19380. (610) 701-0481
www.LocalWebListings.Info; E-mail: localweblisting@aol.com
Our "LocalWebListings" helps you find over 3,200 Chester County websites. This printed directory gives you access to a wide variety our area's businesses and organizations. See website for more information.

Today Media, Inc.

3301 Lancaster Pike, Suite 5C, Wilmington, DE 19805
(302) 656-1809; Fax: (302) 656-5843; www.delawaretoday.com
Delaware Today, the only four-color publication in DE; Main Line Today, the magazine for Philadelphia's western suburbs; Wilmington, DE's Brandywine Valley; Delaware County Magazine; Valley Forge Visitor's Guide and Delaware Lawyer.

Traveler Discount Guide

4205 NW 6th St., Gainesville, FL 32609
(352) 371-3948; Fax: (352) 377-4129
www.travelerdiscountguide.com
E-mail: dennis.wagner@travelerdiscountguide.com. Hotel discount coupons located in our printed green Traveler Discount Guide.

ValleyDel Publications

842 E. Sreet Rd., Westtown, PA 19395
(610) 399-1720. Publisher of County Lines Magazine, the monthly guide to unique places, interesting events, fine dining and great shopping in the Brandywine Valley—now in its 28th year!

RELOCATION SPECIALISTS**Century 21 Absolute Real Estate & Relocation Services**

1314 West Chester Pike, West Chester, PA 19382
(800) 221-7693; www.c21absolute.com
E-mail: kathlene.hanick@century21.com. Philadelphia 5 Co. Area Quality service real estate firm specializing in buying, selling, relocating and property management since 1967.

Century 21 Alliance—Jennersville

650 West Baltimore Pike, West Grove, PA 19390 (610) 345-1600, (610) 909-8655; Fax: (610) 345-1601; www.brendahomes.net
www.unionvillehomes.net; www.c21alliancescc.com
E-mail: brendab@ccis.net. Relocation Specialist, Brenda Baccino, resides in Southern Chester County and specializes in residential, new construction and land sales.

Century 21 Pierce & Bair

699 Unionville Rd., Kennett Square, PA 19348
(610) 444-5536; (800) 221-7845; Fax: (610) 444-1745
www.century21piercelandbair.com; E-mail: c21pbair@aol.com
VIP Relocation Specialists; Full Service real estate firm with personalized service, relocation consultation, neighborhood info, targeted home searches, in-depth school district info. Our goal is to help you feel at home!

Kit Anstey Real Estate Team/ Prudential Fox & Roach Realtors

1234 West Chester Pike, West Chester, PA 19382
(mailing address: 1554 Paoli Pike, PMB #313, West Chester, PA 19380)
(610) 430-3001; Fax: (610) 436-1879; www.AnsteyTeam.com
E-mail: kit@AnsteyTeam.com. Quality service, specializing in residential real estate sales in Chester & Delaware counties.

Mary Robins—RE/MAX Main Line

49 E. Lancaster Ave., Paoli, PA 19301
(610) 578-4141; Fax: (610) 640-9322
www.MaryRobins4Homes.com
E-mail: Mary@MaryRobins4Homes.com. Relocating? You can be sure to receive my special attention. On my website find info regarding schools, sports, arts, weather, transportation and fun activities. Also Tips for Successful Home Buying.

Patterson-Schwartz

7234 Lancaster Pike, Hockessin, DE 19707
(800) 443-2295 or (302) 234-3600; Fax: (302) 234-5235
www.pattersonschwartz.com. E-mail: sdali@psre.com
A full-service real estate company with 7 residential offices. The relocation center offers a complete menu of services to transferring individuals and families.

RE/MAX Action Associates

403 W. Lincoln Hwy, Ste 101, Exton, PA 19341
(610) 363-2001; Fax: (610) 363-5275; www.homesinpa.com
E-mail: info@homesinpa.com. Full service real estate brokerage

RE/MAX at Jennersville

699 W. Baltimore Pike, West Grove, PA 19363
(610) 812-1379; www.RosinaWoolston.com
E-mail: Rosina@epix.net. Professional and personalized service; Specializing in residential and farm sales; Servicing beautiful Chester & Lancaster County. Please feel free to contact me if you would like to preview properties in the area.

RE/MAX Blue Ribbon Associates

999 West Chester Pike, Suite 100, (corner of Rts. 3 & 202)
West Chester, PA 19382. (610) 363-1486; www.jensellshouses.com
Specializing in Residential Real Estate in Chester County for the past 11 years. Always call Jennifer Hohenberger at (610) 363-1486. I am your best resource regarding your biggest asset.

RE/MAX Professional Realty, Inc.

557 W. Uwchlan Ave., Exton, PA 19341
(610) 363-8444; Fax: (610) 363-8843; www.goprofessional.com
E-mail: info@remaxprofessional.com. A leader in the Chester County market committed to your home buying or selling needs with over 50 experienced sales associates and a mortgage company representative and title company onsite.

Team Wilson Prudential Fox & Roach/Trident Mortgage

3838 Kennett Pike, Greenville, DE 19807 (302) 888-1088
Fax: (302) 888-0404; www.wilsonteam.com
E-mail: teamwilson@wilsonteam.com. Over 70 years combined experience, offering the finest relocation services in Chester County, we make your transition seamless, including fast and easy mortgage approval thru Gail Frederick, Trident Mortgage. Call for relocation pkg.

Weichert Realtors

101 E. Lancaster Ave., Paoli, PA 19301. (610) 647-5600
Fax: (610) 993-9631. Weichert one: one stop, many solutions. Delivering better real estate services to our customers is "The Weichert Difference." Also offering real estate career opportunities. Call Polly Miller, Associate Broker/Manager.

Weichert Realtors

1238 West Chester Pike, West Chester, PA 19382. (610) 459-7165
Fax: (610) 344-7167; www.bfennellysellsrealestate.com
E-mail: Betty@Bfennellysellsrealestate.com. Providing quality real estate services and information to Chester County for almost 10 years. Visit our website to get a free report showing how to get top dollar for your home.

Weichert Realtors

2813 West Chester Pike, West Chester, PA 19382. (610) 436-0400
Fax: (610) 344-7167; E-mail: lmcowell@weichert.com
Realtor concentrating in residential real estate.

Weichert Relocation

1625 Rte. 10 East, Morris Plains, NJ 07950
(800) 648-3303; Fax: (973) 267-7781; www.weichert.com
18 offices in the greater Philadelphia area with committed, full-service agents for all of your buying and servicing needs.

SCHOOLS AND UNIVERSITIES**Camphill Special School**

1784 Fairview Rd., Glenmoore, PA 19343
(610) 469-1715; Fax: (610) 469-9758; www.Beaverrun.org
E-mail: cgoetz@beaverrun.org. Nurturing the wholesome development of children & youth with developmental disabilities through extended family living, education and therapy. Children (K-12) whose needs have not been met in other environments are welcome.

Cheyney University of Pennsylvania

1837 University Circle, Cheyney, PA 19319
(610) 399-2069; Fax: (610) 399-2491; www.cheyney.edu
E-mail: lnero@cheyney.edu. The oldest of the Historically Black Colleges & Universities; Founded February 25, 1837! Our President invites you to come feel our history. Students interested in touring our historical campus call (610) 399-2275.

Immaculata University

1145 King Rd., Immaculata, PA 19345
(610) 647-4400; Fax: (610) 647-5250; www.immaculata.edu
Immaculata University is a Catholic, coeducational liberal arts university offering over 60 undergraduate majors, six masters & two doctoral degree programs. Located on a 373-acre campus overlooking the Chester Valley.

The Phelps School

583 Sugartown Rd., PO Box 476, Malvern, PA 19355
(610) 644-1754; www.phelpsschool.org
E-mail: admis@thephelpsschool.org. The Phelps School is dedicated to a personalized education for the boy who seeks success, academically, personally and socially.

Successful Events at WCU

Opening our doors for conferences and meetings has become a vital part of WCU's commitment to public service. Serving both community organizations and business professionals, our two locations are convenient and accessible.

WCU Campus

- A 1,200-seat auditorium
- Multi-purpose student union houses a 350-seat auditorium, ballroom banquet space and eight breakout rooms
- Overnight on-campus accommodations are available from mid-May through early August
- Ropes course and team building education programs

Graduate Business Center

- Multiple video conference rooms
- High-speed and wireless internet
- Banquet space for 150
- Ample parking and easy access to Route 202



RESPECT EXCELLENCE
WCU



Information:
610-436-6931
www.wcupa.edu/
conference.services/



Lincoln University

1570 Old Baltimore Pike, PO Box 179, Lincoln University, PA 19352
(610) 932-8300; www.lincoln.edu. A premier, nationally ranked university offering undergraduate programs in 46 academic majors; six pre-professional programs in dentistry, engineering, law, medicine, nursing and veterinary science; also six master's degree programs.

West Chester University

700 South High St., West Chester, PA 19383. (610) 436-1000
Fax: (610) 436-2790; www.wcupa.edu. The fourth-largest Philadelphia-area University, WCU is a comprehensive, regional public institution offering undergraduate and graduate programs, plus professional certificates. Committed to access, excellence in education, service, cultural and community responsiveness.

TOURS

American Heritage Landmark Tours

14 Anthony Dr., Malvern, PA 19355
(610) 647-4030; Fax: (610) 993-0533; www.ahltours.com
E-Mail: ahl@erols.com. Since 1981, full service tour planning specializing in custom-designed traditional and unique tours for Brandywine Valley, Philadelphia, Valley Forge, Lancaster and Bucks County. Colonial costumed guides.

Centipede Tours

1315 Walnut St., Philadelphia, PA
(215) 735-3123; Fax: (215) 735-9790; www.centipedeinc.com
E-mail: centipedet@aol.com. Candlelight Stroll of Society Hill, the neighborhood of historic Philadelphia with guides in colonial costume. Every Sat 6:30pm from Welcome Park at 2nd & Walnut Sts. May 29 to Oct 16. Fee. Weather permitting.

Rev War Tours, Inc.

PO Box 471, Downingtown, PA 19335
(866) REVWAR1 or (610) 942-3111; E-mail: revwartours@aol.com
Guides of the American Revolution. Colonial Soldiers present insider tours of the Brandywine Battlefield and other Philadelphia Campaign sites; See where the action happened, soldiers fell and were buried. Special Programs available.

TRANSPORTATION

Big Bus Company

111 S. Independence Mall East, Suite 740, Philadelphia, PA 19106
(866) 3-BigBus (866-324-4287) or (215) 923-5008
Fax: (215) 923-5091; www.bigbustours.com
E-mail: infophiladelphia@bigbustours.com. See the Philadelphia experience from the top of our Double-Decker tour buses; 24 hour ticket, unlimited hop-on-off at 20 stops; Buses and guides available for private charters.

Eagle Limousine & Motor Coach, Inc.

20 S. Valley Rd., Paoli, PA 19301. (610) 647-1416
(800) 669-5460; Fax: (610) 640-4667; www.eaglelimo.com
E-Mail: rbowers@eaglelimo.com. 10 years of servicing public with 155 vehicles, 14 motor coaches; available 24 hrs/day, 7 days/wk. Shuttle service, day trips, charters, etc.; 3 locations: Dover, DE, New Castle, DE and Paoli, PA.

Krapf's Coaches, Inc.

1060 Saunders Ln., West Chester, PA 19380. (800) 548-9317
Half a century of excellence in pupil transportation, motor coach charters, paratransit, public transit, shuttle service and luxury limousines.

Rainbow Cab and Limo

539 South Bolmar St., West Chester, PA 19382
(610) 696-6060; (800) 322-4470; Fax: (610) 436-7424
www.rainbowlimo.com. E-mail: admin@rainbowcab.com
Offering Taxi Service, Airport Shuttles and chauffeured Lincoln Town cars to the airport. Professional, uniformed drivers offer you taxi service with a limousine attitude!

Restaurant Valet

64 E. Uwchlan Ave., #274, Exton, PA 19341
(610) 721-6155; Fax: (610) 458-7319; www.restaurant-valet.com
E-mail: restaurantvalet@hotmail.com. Providing transportation for restaurants and hotels. Specializing in transportation for those individuals or groups that would like to dine out and enjoy themselves without the risk of drinking and driving.

West Chester
THE PERFECT TOWN
IN THE HEART OF CHESTER COUNTY

Dine at over 45 restaurants

Browse in 10 art galleries

Shop in over 75 boutiques

Find one-of-a-kind jewelry

www.downtownwestchester.com



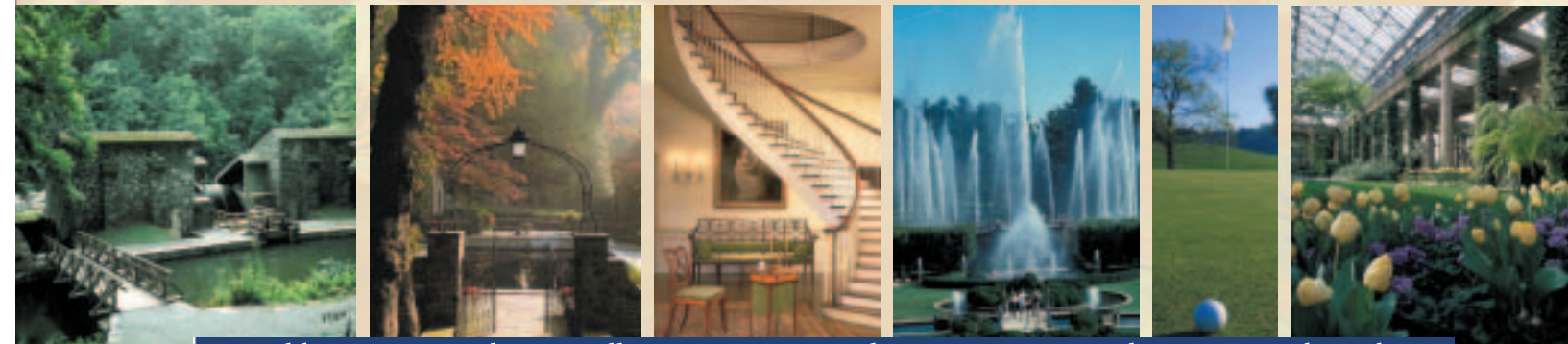
BRANDYWINE VALLEY INN'S
GETAWAY PACKAGES



Brandywine Valley Inn Accommodations

Stay in a Reproduction Winterthur Suite or Chamber, a Country French Boudoir or one of our Deluxe Guestrooms and be pampered by our Einstein's Bagels Breakfast, Courtyard Pool, Grand Hall Lobby and attentive staff. We promise a hotel experience as special and memorable as the the Brandywine Valley itself.

GOLF & GARDENS PACKAGES SPECIAL OFFER! CALL TODAY!



World Famous Brandywine Valley Attractions - Hagley Museum, Winterthur, Longwood Gardens

We invite you to experience our Cultural Getaway Packages to Longwood Gardens, Winterthur, Nemours, Hagley and Brandywine River Museums and our new Golf & Gardens Packages to the LPGA DuPont Country Club Course and Longwood Gardens. The Inn's knowledgeable, professional staff will arrange your daily itineraries with customized maps of the Brandywine Valley, plus on Sunday night stays you'll receive a free photography book "The Brandywine Valley" by award winning National Geographic photographer Kevin Fleming.

BRANDYWINE VALLEY INN
A Hotel For All Reasons

1807 Concord Pike • Exit 8, I-95 • Wilmington, DE 19803 • www.brandywineinn.com

For Getaway Packages Details & Reservations Call

1-800-537-7772