

# University City

## Philadelphia

### Visitor's Guide



cafés & restaurants  
museums & galleries  
hotels & b&bs  
shopping,  
neighborhood info,  
& more



Dear Visitor:

Welcome to University City!

Each year, thousands of visitors enjoy the rich cultural opportunities, wonderful array of ethnic restaurants, and unique shopping that University City has to offer – a 2.2 sq. mile district on the west side of downtown Philadelphia (see map on page 27).

Founded in 1997, University City District, a private nonprofit organization, builds effective partnerships to maintain a clean and safe environment and to promote, plan and advocate for University City's diverse, urban community. We are the region's leading community for technology, research, higher education and health care integrated with historic and desirable residential neighborhoods, vibrant commercial corridors, cultural attractions, and strong transportation connections.

We welcome visitors from near and far and hope this guide assists in making each visit an enjoyable, memorable, and inspirational experience.



Eric T. Goldstein, RLA  
Executive Director  
University City District

# UCD University City District

[www.UCityphila.org](http://www.UCityphila.org)

University City District  
3940 Chestnut Street  
Philadelphia, PA 19104  
t/215.243.0555  
f/215.243.0557  
[ucd@ucityphila.org](mailto:ucd@ucityphila.org)

# Contents

Culture 05

Cuisine 09

Recreation 15

Lodging 17

Shopping 19

Hospitals & Health Services 20

Parks & Neighborhoods 23

Colleges & Universities 25

Map 27



Jim Abbott



R. Kennedy



Jim Abbott



Jim Abbott

@Penn

Penn celebrates arts  
and culture.

» Performing Arts

Annenberg Center / Penn Presents

» Humanities

Kelly Writers House

Penn Humanities Forum

University of Pennsylvania Press

» Museums and Galleries

Architectural Archives

and Kroiz Gallery

Arthur Ross Gallery

Institute of Contemporary Art

University of Pennsylvania Museum

» Broadcast

WXPN 88.5 FM



**Penn**  
UNIVERSITY of PENNSYLVANIA

# Culture

Addams Gallery  
Univ. of Pennsylvania  
200 S. 36th Street  
[www.upenn.edu/gsf](http://www.upenn.edu/gsf)  
215.898.8374  
Exhibits by students and faculty of Penn's School of Design. Free. hours ... t-f: 10-5 ... sa-su: 12-5

Annenberg Center/  
Irvine Auditorium  
Univ. of Pennsylvania  
3680 Walnut St./3401 Spruce St.  
[www.pennpresents.org](http://www.pennpresents.org)  
215.898.6701  
Penn Presents hosts world-renowned music, theater, dance, & children's events.

Architectural Archives of the Univ. of PA / Kroiz Gallery  
Univ. of Pennsylvania  
220 S. 34th Street  
[www.upenn.edu/gsf/archives](http://www.upenn.edu/gsf/archives)  
215.898.8323  
Exhibits the works of architects from the 18th c. to the present. Free. hours ... m-f: 10-5

Arthur Ross Gallery  
Univ. of Pennsylvania  
220 S. 34th Street  
[www.upenn.edu/ARG](http://www.upenn.edu/ARG)  
215.898.2083  
Houses objects from public, private, & Penn collections. Free. hours ... t-f: 10-5 ... sa-su: 12-5

Maurice S. Burrison Gallery  
Univ. of Pennsylvania  
3611 Walnut Street, 2nd floor  
[www.upenn.edu/facultyclub](http://www.upenn.edu/facultyclub)  
215.898.4618  
Exhibitions of University-related artists. Free. hours ... m-f: 9-6

Calvary Center  
48th Street & Baltimore Avenue  
[www.calvary-center.org](http://www.calvary-center.org)  
215.724.1702  
Hosts music & performing arts.

Community Education Center  
3500 Lancaster Avenue  
[www.libertynet.org/cec](http://www.libertynet.org/cec)  
215.387.1911  
Arts & education center with resident theater & dance troupes.

East Africa Resource Center  
3809 Pearl Street  
[www.eastafricacenter.com](http://www.eastafricacenter.com)  
215.382.3191  
Exhibits, performances, classes, & films on East African culture. hours ... f-sa: 11-7 or by appt.

Ellen Powell Tiberino  
Memorial Museum  
3819 Hamilton Street  
215.386.3784  
Tiberino's paintings & works of local sculptors. hours ... sa-su: 12-6 or by appt.

Esther M. Klein Art Gallery  
3600 Market Street  
[www.kleinartgallery.org](http://www.kleinartgallery.org)  
215.966.6188  
Community-based gallery dedicated to raising cultural awareness. Free. hours ... m-sa: 9-5

Gwendolyn Bye Dance Center  
3611 Lancaster Avenue  
[www.gbyedance.com](http://www.gbyedance.com)  
215.222.7633  
Offers a variety of dance lessons, classes, & workshops.

Institute of Contemporary Art  
118 S. 36th Street  
[www.icaphila.org](http://www.icaphila.org)  
215.898.5911  
A leader in the presentation of contemporary art featuring both established and emerging artists. hours ... w-f: 12-8 ... sa-su: 11-5

International House  
3701 Chestnut Street  
[www.ihousephilly.org](http://www.ihousephilly.org)  
215.387.5125  
A dynamic center for film, arts programs, & a residential community promoting intercultural understanding and cooperation.

Kelly Writers House  
Univ. of Pennsylvania  
3805 Locust Walk  
[www.english.upenn.edu/~wh](http://www.english.upenn.edu/~wh)  
215.573.9748  
Center for writers of all kinds from Penn and the region.

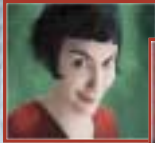
Leonard Pearlstein Gallery  
Drexel University  
33rd & Market streets  
[www.drexel.edu](http://www.drexel.edu)  
215.895.2548  
Gallery exhibiting variety of artists & media. Free. hours ... m-f: 11-5



The Community Education Center (CEC) hosts local, national, and international dance companies.

photo: Raphael Xavier

**Film Art Music Dance Food Authors Spoken English Program  
And 300 people from over 50 countries living under one roof.**



International House

3701 Chestnut Street ~ 215.387.5125  
[www.ihousephilly.org](http://www.ihousephilly.org)

50% off what's hot.  
Tell us that's not cool.

Our Thursday e-mails save you big on the area's best entertainment. Log on and sign up, free.



A PROJECT OF THE  
PHILLY  
cultural  
ALLIANCE

Come  
Face-to-Face  
With Cultures  
Through Time  
and  
Across  
Continents



University of Pennsylvania Museum  
of Archaeology and Anthropology  
3260 South Street  
[www.museum.upenn.edu](http://www.museum.upenn.edu)  
215-898-4000



# Culture

## Living Loft Puppet Museum

3114 Spring Garden Street

[www.spiralq.org](http://www.spiralq.org)

215.222.6979

Provides tours & workshops that celebrate local & personal voices through puppets & pageantry.

## Marvin Samson Center for the

History of Pharmacy

Univ. of the Sciences in Phila.

600 South 43rd Street

[www.usip.edu](http://www.usip.edu)

215.596.8800

Unique collection of pharmaceutical artifacts as well as special exhibitions. Free.

hours ... m-f: 9-5

## Meyerson Gallery

Univ. of Pennsylvania

210 S. 34th Street

[www.upenn.edu/gsf](http://www.upenn.edu/gsf)

215.898.8374

Exhibits work by Penn School of Design students and faculty. Free.

hours ... m-f: 9-5

## Paul Peck Alumni Ctr. Gallery

Drexel University

32nd & Market streets

[www.drexel.edu/drexelcollection](http://www.drexel.edu/drexelcollection)

215.895.0480

Houses selected works from The Drexel Art Collection. Free.

hours ... m-f: 9-5

## Paul Robeson House Museum

4951 Walnut Street

[www.u-city.com/wpca](http://www.u-city.com/wpca)

215.747.4675

Dedicated to the life, legacy, & philosophy of noted Philadelphian Paul Robeson. Free.

hours ... m-f: 9-5

## PhilaDanco

9 N. Preston Street

[www.philadanco.org](http://www.philadanco.org)

215.387.8200

Internationally-renowned contemporary dance company.

## Philadelphia Boys Choir

225 N. 32nd Street

[www.phillyboyschoir.org](http://www.phillyboyschoir.org)

215.222.3500

World-famous choir & chorale that tours the globe.

## Philadelphia Cathedral

38th & Chestnut streets

[www.philadelphiacathedral.org](http://www.philadelphiacathedral.org)

215.386.0234

Hosts music & cultural events.

## The Rotunda/Foundation

Community Arts Initiative

4014 Walnut Street

[www.foundationarts.org](http://www.foundationarts.org)

215.573.3234

Alternative venue for live musical performances, visual arts, & dance. Free.

## Slought Foundation

4017 Walnut Street

[www.slought.net](http://www.slought.net)

215.222.9050

Rotating exhibitions, events, and publications melding art & theory.

hours ... w-sa: 11-6 & by appt.

## Squirrel Hill Falls Amphitheater

48th Street & Chester Avenue

215.729.5022

Secluded park hosting neighborhood performances.

## University City Arts League

4226 Spruce Street

[www.ucartsleague.org](http://www.ucartsleague.org)

215.382.7811

Exhibitions of local and emerging artists and art classes.

hours ... m-f: 1-6 ... sa: 9:30-12

## Univ. of Pennsylvania Museum of

Archaeology & Anthropology

3260 South Street

[www.museum.upenn.edu](http://www.museum.upenn.edu)

215.898.4000

World-renowned collection of art and artifacts from around the world. Includes shops & café.

hours ... t-sa: 10-4:30 ... su: 1-5

## Westphal Picture Gallery

Drexel University

32nd & Chestnut streets

[www.drexel.edu/drexelcollection](http://www.drexel.edu/drexelcollection)

215.895.0480

Houses selected works from The Drexel Art Collection. Free.

hours ... m-f: 9-5

## The Woodlands

4000 Woodland Avenue

215.386.2181

Classical Revival mansion on 54 acres with noted plant collection and cemetery.

## World Café Live

3025 Walnut Street

[www.worldcafelive.com](http://www.worldcafelive.com)

215.222.1400

Contemporary live music & radio broadcasts, food & drink, 7 days a week.



Firehouse Farmers Market (above) at 50th & Baltimore Ave.

photo:  
Mark Garvin

The interior of Pod (right) at 3636 Sansom St.

photo:  
Tommy Leonardi



Penne Restaurant & Wine Bar at 3611 Walnut Street.

photo: Tommy Leonardi



# GOOD TIMES ARE JUST AROUND THE CORNER

LUNCH,  
DINNER  
& LATE  
7 DAYS!



# COPABANANA

40th & Spruce • 4th & South

**MENUS:** [www.copabanana.com](http://www.copabanana.com)

**DELIVERY:** [www.campusfood.com](http://www.campusfood.com)



# Cuisine

RR=Reservations Recommended

\$ average entrée under \$10

\$\$ average entrée under \$20

\$\$\$ average entrée over \$20

## 12 Lounge

4017 Locust Street

215.386.3300

Light fare with full bar in The Bridge cinema. Outdoor seating. \$

## 2 Goodfellas Restaurant

4101 Walnut Street

215.382.3600

Italian-American favorites for lunch and dinner. \$-\$\$

## Abbraccio Restaurant

820 S. 47th Street

215.727.8247

Fresh pasta, burgers, & Italian specialties. Outdoor dining, private parties, & live music. \$-\$\$

## Abyssinia Restaurant & Bar

229 S. 45th Street

215.387.2424

Ethiopian. Breakfast, lunch, & dinner. \$

## Beijing Restaurant

3714 Spruce Street

215.222.5242

Cantonese & Szechuan. \$

## Ben & Jerry's

218 S. 40th Street

215.382.5092

Famous Vermont ice cream. \$

## Blue Nile Cafe

4527 Baltimore Avenue

215.386.1971

Sudanese cuisine. BYOB. \$

## Bubble House

3404 Sansom Street

215.243.0804

Asian teahouse/restaurant featuring bubble tea and delicious pan-Asian fusion fare. \$-\$\$

## Café Clave

4305 Locust Street

Cuban café with coffee, espresso, pastries & light fare. \$

## Cavanaugh's Restaurant

119 S. 39th Street

215.662.5000

Wings, munchies, & pizza. Large screen TV's. \$

## Chili's Grill & Bar

3801 Chestnut Street

215.222.7322

Fajitas, burgers, ribs, & salads. \$

## Copabanana (see ad p. 8)

4000 Spruce Street

215.382.1330

Famous margaritas. Lunch, dinner, & late night dining. \$

## Cosi Coffee & Bar

140 S. 36th Street

215.222.4545

Café with sandwiches, full bar, & outdoor seating. \$

## Dahlak Restaurant

4708 Baltimore Avenue

215.726.6464

Eritrean/Ethiopian. Vegetarian, chicken, beef, lamb, spicy & mild dishes. Full bar & live music. \$

## Ecco Qui (see ad p. 10)

3200 Chestnut Street

215.222.3226

Italian. Homemade breads, pastries, and wood oven pizzas. \$\$

## Fatou & Fama Restaurant

4002 Chestnut Street

215.386.0700

W. African, W. Indian, and Soul Food. Closed Mon. BYOB. \$-\$\$

## Firehouse Farmers Market

701 S. 50th Street

215.724.7660

Indoor, year-round market with butcher, café, grill, produce, & Amish baked goods.

Open Tues.-Sat., 8 am-7 pm. \$

## The Freshgrocer (see ad p. 10)

4001 Walnut Street

215.222.9200

Supermarket with fresh sushi, deli, bakery, & prepared food. Eat-in or take out. Validated parking.

Open 24 hours. \$

## Gia Pronto

3736 Spruce Street

215.222.7712

Organic sandwiches, salads, & pastries. \$

## Genuine Baking Co.

4529 Springfield Avenue

215.382.3133

Comfort and soul food take-out. \$

# Ecco Qui

here it is

RESTAURANT • WINE BAR

phone: 215.222.ECCO fax: 215.222.4489

3200 Chestnut Street @ The Left Bank

[www.eccoqui.com](http://www.eccoqui.com)

• P H I L A D E L P H I A •

## the fresh grocer

open 24 hours, ample parking above store,  
hot foods, fresh sushi, salad bar, sandwich bar

4001 Walnut St.

215.222.9200

[www.thefreshgrocer.com](http://www.thefreshgrocer.com)

## Lee's Hoagie House

SIMPLY, THE BEST

Steaks, Shakes, Hoagies, Wraps, Fries,  
Chicken Steaks, Wings, Chicken Fingers,  
Chicken Breast Sandwiches

4034 WALNUT ST. WE DELIVER ALL DAY 215-387-0905

restaurant  
**NAN**  
modern food

Closed Sundays - Mondays B.Y.O.B.  
4000 Chestnut St. Phila. PA 19104  
(215) 382-0818

# Cuisine

RR=Reservations Recommended

\$ average entrée under \$10

\$\$ average entrée under \$20

\$\$\$ average entrée over \$20

Gojjo Restaurant & Bar  
4540 Baltimore Avenue  
215.386.1444

Delicious Ethiopian, cozy bar, entertainment, & game room. \$

Green Line Café  
4239 Baltimore Avenue  
215.222.3431

Neighborhood spot with coffee, sandwiches, & outdoor seating. \$

Han Wool  
3608 Chestnut Street  
215.382.6221

Japanese & Korean food. Sushi, sashimi, tempura, & Japanese beer & wine. \$-\$\$

Intermezzo Café & Lounge  
3131 Walnut Street  
215.222.4300

Sushi, espresso, full bar, & high-speed internet. \$

Izzy & Zoe's  
224 S. 40th Street  
215.382.2328

Sandwiches, salads, kosher, breakfast all day. Outdoor seating. Catering. \$

Kabobeesh Restaurant  
4119 Walnut Street  
215.386.8081

Pakistani, Indian, & Afghan grill. \$

Kabob Palace  
4201 Chestnut Street  
215.222.0306

Real Pakistani cuisine. BYOB \$

Koch's Deli  
4309 Locust Street  
215.222.8662

Traditional Jewish deli with oversized hoagies & thick milkshakes. \$

La Terrasse  
3432 Sansom Street  
215.386.5000

French food with a modern twist, happy hour, & late menu. RR. \$\$

Lee's Hoagie House (*see ad p. 10*)  
4034 Walnut Street  
215.387.0905

A Philadelphia tradition serving cheesesteaks, wings, salads, wraps, & shakes. \$

Lemon Grass Thai Restaurant  
3630 Lancaster Avenue  
215.222.8042

Imaginative dishes, vegetarian menu, & desserts. RR. \$-\$\$

Lou's Mexican Restaurant  
305 N. 33rd Street  
215.386.LOUS

Authentic Mexican food by acclaimed 'Taco Lou'. BYOB \$-\$\$

Mad 4 Mex  
3401 Walnut Street  
215.382.2221

Funky, fresh Cal-Mex food. Microbrew beers & margaritas. \$\$

Metropolitan Bakery & Café  
4013 Walnut Street  
215.222.1492

Café, sandwiches, & breads. Indoor & outdoor seating. \$

Mill Creek Tavern  
4200 Chester Avenue  
215.222.9194

46 taps, pool table & live music, Italian-American food. \$-\$\$

Mokas Greek Restaurant  
3505 Lancaster Avenue  
215.222.4410

Full bar & grill, fresh fish, vegetables, patio/terrace, live entertainment. \$-\$\$

Nan Modern Food (*see ad p. 10*)  
4000 Chestnut Street  
215.382.0818

French-Thai fusion in a subtle atmosphere. Closed Mondays. RR. \$\$

Nara Japanese Restaurant  
4002 Spruce Street  
215.387.1583

Great sushi & teriyaki dishes. Lunch & dinner. RR. \$\$

New Deck Tavern  
3408 Sansom Street  
215.386.4600

Bar food & sandwiches. \$

New Delhi Restaurant  
4004 Chestnut Street  
215.386.1941

Daily lunch & dinner buffet, à la carte, & Indian beers. \$

# Paris Café 41

"Best Brew Delaware Valley 2003"

**Fine espresso bar, Salads, Panini,  
Soups, Desserts, Omelettes**

**124 S. 41st Street  
(215) 382-2577**

**Open 7 days**

**Continental Breakfast, Lunch & Dinner**

**Frequent Buyer Program - Wireless Internet  
Credit Cards accepted - Games and books available**



## Vientiane Cafe

Lao/Thai Cuisine

4728 Baltimore Avenue

215.726.1095

BYOB

Lunch 11 - 3    Dinner 5 - 9:30    Closed Sundays

EXCEPTIONAL DINING

**Delight your palate at one of  
our unique restaurants!**

### **The Italian Trattoria**

A casual way to enjoy  
regional pasta specialties

### **The American Heartland**

A contemporary approach to  
traditional American Fare

### **The Great Chefs of Philadelphia**

Fine cuisine from the City's  
notable restaurateurs

### **European Brasserie**

Continental dining with  
a French flair

Each restaurant features its own unique menu of food and wines

*The  
Restaurant  
School*  
AT WALNUT HILL  
COLLEGE

**For seating times  
and reservations, call  
215-222-4200**

Conveniently located in the heart of University City at 4207 Walnut Street · Philadelphia

# Cuisine

RR=Reservations Recommended

\$ average entrée under \$10

\$\$ average entrée under \$20

\$\$\$ average entrée over \$20

O'Hara's Fish House  
3900 Chestnut Street  
215.349.9000

Popular seafood restaurant specializing in crabs. \$-\$\$

Paris Café 41 (see ad p. 12)  
124 S. 41st Street  
215.382.2577

European café with great coffee, pastries, paninis, and sandwiches. \$

Pattaya Grill  
4006 Chestnut Street  
215.387.8533

Thai-French cuisine. Lunch & early bird specials. \$\$

Penne Restaurant & Wine Bar  
3611 Walnut Street  
215.823.6222

Modern Italian cuisine, handmade pasta, extensive wine list, & creative bar menu. RR. \$\$

Philly Diner  
3925 Walnut Street  
215.382.3400  
24 hour diner. \$

Pho and Café Saigon  
4248 Spruce Street  
215.222.6800

Vietnamese cuisine. \$-\$\$\$

Picnic at The Left Bank  
3131 Walnut Street  
215.222.1608

Fresh carry-out with some indoor/outdoor seating. \$-\$\$\$

Pizza Rustica  
3602 Chestnut Street  
215.895.3490

Panini, wood-oven pizzas, gelati, & full bar with outdoor deck. \$-\$\$\$

Pod  
3636 Sansom Street  
215.387.1803

Futuristic Asian-fusion including creative dim sum & conveyor belt sushi. \$\$-\$\$\$

Rana Middle East Cuisine/  
Ed's Buffalo Wings  
3513 Lancaster Avenue  
215.222.7136

Middle-eastern & American favorites. \$

The Restaurant School at  
Walnut Hill College (see ad p. 12)  
4207 Walnut Street  
215.222.4200

3 distinct restaurants (American, Italian, haute cuisine) & pastry shop operated by students. \$-\$\$\$

Rx  
4443 Spruce Street  
215.222.9590

Rotating lunch & dinner menu. Locally grown products & homemade desserts. BYOB. \$-\$\$

Sitar India Restaurant  
60 S. 38th Street  
215.662.0818

North & South Indian food, buffet, & delivery. \$

Smokey Joe's Tavern  
208 S. 40th Street  
215.222.0770

Bar food & sandwiches. \$

Sugar Hill Bakery & Café  
4908 Baltimore Avenue  
215.730.9210

Old-fashioned southern baking alongside unique, eclectic delicacies. \$

Tandoor India Restaurant  
106 S. 40th Street  
215.222.7122

Indian buffet & à la carte. \$

Thai Singha House  
3939 Chestnut Street  
215.382.8001

Lunch, dinner, Sunday brunch, & early bird specials. \$\$

Top Dog Sports Grill  
36th & Chestnut streets  
215.574.2178

Sports bar inside the Sheraton Hotel. \$-\$\$\$

Triangle Diner  
3716 Spruce Street  
215.573.4431

Traditional diner fare. \$

Vientiane (see ad p. 12)  
4728 Baltimore Avenue  
215.726.1095

Authentic Laotian & Thai cuisine. BYOB. RR. \$-\$\$\$



## White Dog Cafe

Award Winning Eclectic American Cuisine focused on  
Organic, Sustainable & Humanely Raised Ingredients,  
Plus Special Events & Weekend Piano Music

3420 Sansom St., Philadelphia, PA 19104  
(215) 386-9224 ☆ [www.whitedog.com](http://www.whitedog.com)



## ZÓCALO

CONTEMPORARY  
MEXICAN CUISINE

36th & Lancaster Ave.

215-895-0139

One block north of Market St. in University City

[www.ucnet.com/zocalo](http://www.ucnet.com/zocalo)

## The Ice Rink at Penn

@ The Class of 1923 Arena

3130 Walnut Street

215-898-1923

[www.business-services.upenn.edu/icerink](http://www.business-services.upenn.edu/icerink)

### Hours:

M, W, F 1:15-3:15 pm  
T, R 12-2 pm  
Sa, Su 12:30-2:30 pm

### Rates:

Admission \$6.50  
Skate rental \$2.50  
\$1 off with PennCARD



# Cuisine

RR=Reservations Recommended

\$ average entrée under \$10

\$\$ average entrée under \$20

\$\$\$ average entrée over \$20

White Dog Cafe (*see ad p. 14*)

3420 Sansom Street

215.386.9224

Award winning contemporary American cuisine, farm fresh & local ingredients, music, & gift shop. RR. \$\$

Won Oriental Restaurant

216 S. 40th Street

215.386.4622

Mandarin, Szechuan, & Cantonese. BYOB. \$

Zócalo (*see ad p. 14*)

3600 Lancaster Avenue

215.895.0139

Contemporary Mexican in a casual atmosphere with outdoor deck. Private parking. RR. \$\$

## Food Courts

For a quick, inexpensive bite to eat, try a restaurant in one of our three food courts.

Shops at 30th Street Station

30th & Market streets

Houston Market

3417 Spruce Street, Ground Level

Moravian Cafés

3401 Walnut Street

## The Food Trucks

A unique part of University City's dining scene, food trucks are a quick, inexpensive, and delicious alternative to sit-down restaurants, especially when the weather is nice. The food trucks offer myriad types of cuisine from crepes to Indian. Find them at various locations on the Penn and Drexel campuses, especially between 37th & 38th on Walnut and 36th & Spruce.

# Recreation

## Movie Theaters

The Bridge: Cinema de Lux

6 screen movie house showing blockbusters and independent films.

Has restaurant, lounge, café, and outdoor seating.

4000 Walnut Street, 215.386.3300, [www.thebridgecinema.com](http://www.thebridgecinema.com)

Cinemagic at Penn

2 screens. 3925 Walnut Street, 215-222-5555

International House

Powerful films and festivals, dance performances, & cultural festivals celebrating the rich cultural diversity of our world and local community.

3701 Chestnut Street, 215-387-5125, [www.ihousephilly.org](http://www.ihousephilly.org)

## Sporting Arenas

Athletic Recreation Center

Univ. of the Sciences in Phila.

4300-24 Woodland Avenue

215.596.7440

John A. Daskalakis Center

Drexel University

3141 Chestnut Street

215.895.1999

Class of 1923 Ice Rink

University of Pennsylvania

3130 Walnut Street

215.898.1923

The Palestra

University of Pennsylvania

33rd St. btwn. Spruce & Walnut

215.898.6151

Franklin Field

University of Pennsylvania

3200 South Street

215.898.6151

*Cornerstone*

*Bed & Breakfast*

AN ELEGANT & COZY URBAN INN

3300 Baring St.      215-387-6065  
cstonebb@aol.com  
www.cornerstonebandb.com

**America's Most  
Convenient Bank<sup>®</sup>**

**Commerce  
Bank** 1-888-751-9000

**University City**  
38th & Walnut Streets

**Rittenhouse Square**  
18th & Walnut Streets

**Center City**  
19th & Market Streets  
Broad & Sansom Streets

Member FDIC



**YOUR ROOM IS READY**

Whether you're in town for business or pleasure, make the Sheraton University City your home away from home. Have a relaxing meal at Shula's Steak 2 before settling into one of our luxuriously plush beds. Reserve your room today by calling 215 387-8000 or visit us online at [www.philadelphiasheraton.com](http://www.philadelphiasheraton.com).

 Who's taking care of you?<sup>™</sup>  
**Sheraton**  
HOTELS & RESORTS

Sheraton University City  
36th & Chestnut Sts., Philadelphia, PA  
215 387-8000 • 215 387-7920 fax



# Lodging

Carriage House  
Bed & Breakfast  
1006 S. 46th Street  
215.349.7764  
mlamond@aol.com

[www.thecarriagehouse.info](http://www.thecarriagehouse.info)  
Charming 2-bedroom converted Victorian era carriage house available by the night, week or month as B&B with breakfast, or for short-term rental stays. Includes parking, kitchen, living & dining rooms, laundry, & other amenities.

Cornerstone Bed & Breakfast  
3300 Baring Street  
215.387.6065  
cstonebb@aol.com  
[www.cornerstonebandb.com](http://www.cornerstonebandb.com)  
This elegant and cozy urban inn features private rooms and suites, all with private baths. Breakfast included. Extended stay discounts. Meeting and party facilities.

Divine Tracy Hotel  
20 S. 36th Street  
215.382.4310  
215.387.0157 (fax)  
Operated according to the standard of Father and Mother Divine. Smoking & alcoholic beverages are restricted, men & women stay on separate floors, visitors are received in lobby only, & modest dress code. Accepts cash or travelers checks only.

The Gables Bed & Breakfast  
4520 Chester Avenue  
215.662.1918  
gablesbb@aol.com  
[www.gablesbb.com](http://www.gablesbb.com)  
10 rooms in a meticulously restored Victorian mansion furnished entirely in period antiques. Private phone, computer access, cable, free off-street parking, full breakfast, non-smoking.

Hilton Inn at Penn  
3600 Sansom Street  
215.222.0200  
215.222.4600 (fax)  
[www.theinnatpenn.com](http://www.theinnatpenn.com)  
Reflects the arts & crafts heritage of the University of Pennsylvania. 238 guest rooms, 18,000 sf. of flexible meeting and banquet space, 24-hour fitness center, bar and restaurant, dataports, internet and PennNet access.

International House  
3701 Chestnut Street  
215.387.5125  
215.895.6570 (fax)  
[www.ihousephilly.org](http://www.ihousephilly.org)  
Dorms and efficiencies for international students and those who are with area colleges & universities. Singles, doubles, and apartments available by the semester or for short stays.

Sheraton University City  
36th & Chestnut streets  
215.387.8000  
215.387.7920 (fax)  
[www.philadelphiaSheraton.com](http://www.philadelphiaSheraton.com)  
Newly renovated, 374 guest rooms, 12 suites, 10,000 sf. of flexible meeting and banquet space, and restaurant/bar. Outdoor heated pool (seasonal), fitness center, on-site parking.

University of Pennsylvania  
Conference Services  
222 Sansom Place East  
3600 Chestnut Street  
215.898.9319  
215.573.8452 (fax)  
[www.upenn.edu](http://www.upenn.edu)  
Provides conference facilities and accommodations for groups throughout the Penn campus.



# Dining, Shopping, Culture & Arts for Every Taste



UNIVERSITY SQUARE

34th to 38th Street, Chestnut to Walnut

Located in the heart of University City

## BALTIMORE AVENUE

### CULTURAL - ECLECTIC - INTERNATIONAL

**Gojjo Ethiopian Restaurant & Bar**  
4540 Baltimore Ave.

**Firehouse Farmers Market**  
50th & Baltimore Ave.

**Vientiane Cafe**  
4728 Baltimore Ave.

**Hair Lounge Records & CDs**  
4702 Baltimore Ave.

**Abbraccio Italian Restaurant**  
820 South 47th St.

**Calvary Center for Culture & Community**  
48th & Baltimore Ave.

**Dahlak Eritrean & Ethiopian Restaurant**  
4708 Baltimore Ave.

**Sugar Hill Bakery**  
4908 Baltimore Ave.

The Penn Bookstore lies at the heart of University Square at 36th & Walnut streets.



photo: Jim Abbott

# Shopping

## 40th Street

40th Street is a "main street" style commercial corridor with a state of the art movie theatre, funky neighborhood shops, eclectic restaurants, and an upscale grocery store. Several cultural venues are also located in this area, making it the perfect place to visit for a stroll through a gallery or to catch a live music show.

The stretch between Walnut and Locust Streets is a popular gathering space with an open square and green space adjacent to a public library and plentiful outdoor seating.

## University Square

University Square is a vibrant commercial district located from 34th to 38th Streets between Chestnut and Walnut streets. It's home to more than 50 dining, retail and entertainment establishments, including fine dining, bistros, cafés, galleries, specialty shops, and cultural venues.

The nucleus is a public green square and plaza, on 36th Street, which is host to live performances, dining al fresco, and provides a recreational respite. Visitors are drawn to the area on the Penn's campus to enjoy the academic atmosphere and unique shopping, dining, and cultural attractions.

## Neighborhood Commercial Corridors

University City is home to two main neighborhood shopping areas: Baltimore Avenue and Lancaster Avenue.

On Baltimore Avenue from 43rd to 50th streets, African & Asian eateries, delicious carrot cake, old-fashioned Southern baked goods, farmers' markets, and freshly carved meats combine to form one of the most diverse areas of the city. Victorian architecture and beautiful, historic Clark Park complete the picture.

On Lancaster Avenue from 34th to 38th streets, flavors of Mexican, Greek, and Thai cuisine merge with avant-garde dance and theater groups to form a culturally rich area. Neo-gothic and colonial revival mansions of nearby historic Powelton Village permeate the area, attesting to its rich historical significance.



# Hospitals & Health Services

The Children's Hospital of Philadelphia  
34th St. & Civic Center Blvd.  
215.590.1000  
[www.chop.edu](http://www.chop.edu)

Hospital of the University of Pennsylvania  
3400 Spruce Street  
800.789.PENN  
[www.pennhealth.com/hup](http://www.pennhealth.com/hup)

Philadelphia Health Care Center #3  
555 South 43rd Street  
215.685.7500  
[www.phila.gov/health](http://www.phila.gov/health)

Presbyterian Medical Center  
39th & Market streets  
800.789.PENN  
[www.pennhealth.com/presby](http://www.pennhealth.com/presby)

Ronald McDonald House  
3925 Chestnut Street  
215.387.8406  
[www.philarmh.org](http://www.philarmh.org)

University of Pennsylvania School of Dental Medicine  
240 South 40th Street  
215.898.5343  
[www.dental.upenn.edu](http://www.dental.upenn.edu)

University of Pennsylvania Veterinary Hospital  
3800 Spruce Street  
215.898.4685  
[www.vet.upenn.edu](http://www.vet.upenn.edu)

VA Medical Center  
University & Woodland Ave.  
215.823.5800  
[www.va.gov](http://www.va.gov)

## PENN'S THE BEST. (And not just because we say so.)

Others say so, too. *U.S. News & World Report* has named the Hospital of the University of Pennsylvania to its Honor Roll of America's best hospitals for the seventh consecutive year. Only 17 hospitals in the entire country receive this accolade. More importantly, it is the only Philadelphia area hospital on the list. Pennsylvania Hospital was recognized for excellence in geriatrics by *U.S. News* as well.

No surprise. *Philadelphia Magazine* listed 36 Centers of Excellence throughout the University of Pennsylvania Health System and routinely lists more doctors from our hospitals than any other in the "Top Docs" issue. For more information, call 1-800-789-PENN or visit [pennhealth.com](http://pennhealth.com).



The future of medicine.®

1-800-789-PENN  
[pennhealth.com](http://pennhealth.com)

University of Pennsylvania Health System includes:  
Pennsylvania Hospital  
Phoenixville Hospital  
University of Pennsylvania Medical Center  
–Hospital of the University of Pennsylvania  
–Presbyterian  
PENN Medicine at Cherry Hill, Limerick and Radnor

# Drexel

## Philadelphia's Technological University

DREXEL UNIVERSITY

- College of Arts and Sciences
- LeBow College of Business
- College of Engineering
- College of Information Science and Technology
- College of Media Arts & Design
- College of Medicine
- College of Nursing and Health Professions
- Goodwin College of Professional Studies
- School of Biomedical Engineering, Science and Health Systems
- School of Education
- School of Public Health

From business to engineering, from liberal arts to medicine—on campus or online, undergraduates to executives—Drexel educates the citizens of Greater Philadelphia and the world. Drexel and the University of Pennsylvania are the only Philadelphia schools among *U.S. News & World Report's* 2004 "Best National Doctoral Universities."

For more information visit [www.drexel.edu](http://www.drexel.edu) or call 215-895-2000 (general) or 1-800-2-DREXEL (admissions)





The statue of Charles Dickens and Little Nell in Clark Park at 43rd & Baltimore Avenue is the only Dickens statue in the world.



UCD Ambassadors patrol the streets of University City and offer assistance every day from 11am-3am.

*Photo: Mark Garvin*

## *All Aboard for the Perfect Event!*



Celebrate your next event at 30TH STREET STATION. This magnificent train station— an historic landmark noted for its Karl Bitter bas relief, ornate 90 foot ceiling, art deco chandeliers, colonnaded porticoes, travertine walls, tree-lined shops and cafes— caters to corporate dinners, meetings, seminars, trade shows, banquets, and weddings. From an intimate party of 100 to a grand gala bash of 1000, we specialize in making your event the trip of a lifetime. So, climb aboard! For a free brochure and information call 215.349.3196

**30TH STREET STATION**  
TO MAKE YOUR TRIP COUNT

# Parks & Neighborhoods

## Clark Park

Established in 1894 in the heart of University City, Clark Park spans 9 acres and boasts more than 300 trees. Home to the world's only life-size bronze statue of Charles Dickens and the commemorative Gettysburg Stone, Clark Park is a neighborhood favorite and hosts events and farmers' markets throughout the year. Two playgrounds for children make this scenic spot a must-see for any visitor.

43rd to 45th streets, Baltimore to Woodland avenues.

[www.clarkpark.info](http://www.clarkpark.info)

## The Woodlands

The Woodlands, a 54 acre National Historic Landmark, is the site of William (grandson of Alexander) Hamilton's c.1787 mansion. This home, carriage house, stable, and garden is one of the architectural masterpieces of 18th-century America. Interred in the cemetery are scores of painters, poets, industrialists, physicians, politicians, and others significant in Philadelphia and national history.

4000 Woodland Avenue. Grounds open daily, 9am - 5pm.

215.386.2181

## University City

You're visiting University City, but you might also be in Cedar Park, Powelton Village, Spruce Hill, Walnut Hill, West Powelton, Squirrel Hill, or Garden Court. Each is a community that adds its own flavor to this part of West Philadelphia. All speak to the historic and social significance of University City.

University City is Philadelphia's "streetcar suburb." While places such as Powelton Village were settled as early as the late 17th century (the area was named for William Powell, a Welsh settler who operated a Schuylkill River ferry in the 1690s), development accelerated with the expansion and electrification of transportation. When horsecar tracks were laid in the 1850s, many wealthy barons of business built homes in this country setting. In the 1880s when streetcar lines were electrified, middle class families moved in, and those with land began developing speculative housing. Also, many churches and leading institutions chose to open or relocate (the University of Pennsylvania, for one) in this comparatively sylvan setting. By the 1920s, automobile-oriented design resulted in Garden Court, primarily twin homes with alleys in back and apartment houses. Because of this dynamic growth from 1850-1930, stunning examples of Gothic Revival, Italianate, Queen Anne, Colonial Revival, Jacobean Revival, Neoclassical, and Tudor Revival architecture can be seen during an afternoon's stroll.

Downloadable maps, photos, and descriptions of the area's history are available at the University City Historical Society website: [uchs.net](http://uchs.net).

## Local and City-wide Events

If you're visiting the area, don't miss two websites that will keep you up-to-date with the many activities, dining options, attractions, discounts, and events going on in University City and the Philadelphia region.

[www.UCityphila.org](http://www.UCityphila.org) and [www.phillyfunguide.com](http://www.phillyfunguide.com) are continuously updated with the latest happenings our city has to offer.



The Drexel Dragon at 33rd & Market streets stands guard over Drexel's campus (above) and Locust Walk, a pedestrian thoroughfare between 34th & 40th streets, bisects Penn's campus (below).



Photo: Tommy Leonard



The Rest. School at Walnut Hill College lies in the heart of University City on 42nd & Walnut streets (above). Students relaxing on Univ. of the Sciences' campus next to Clark Park at 43rd & Woodland Avenue (below).





# Colleges & Universities

## Comm. College of Philadelphia-West Regional Center

A branch of the city's community college, the West Regional Center offers credit courses, GED preparation, and a wide range of credit-free courses each semester.

4725 Chestnut St. Info: 215.764.1050 or visit [www.ccp.edu](http://www.ccp.edu).

## Drexel University

Drexel University was founded in 1891 as the Drexel Institute of Art, Science and Industry by Philadelphia financier and philanthropist Anthony J. Drexel to provide educational opportunities in the "practical arts and sciences" for women and men of all backgrounds. The Drexel Institute of Technology gained university status in 1970, becoming Drexel University. On July 1, 2002, Drexel entered a new era as Philadelphia's technological leader in health sciences education, when the University was officially united with the former MCP Hahnemann University. The academic units include one of only two schools of public health in the Commonwealth of Pennsylvania, the country's largest private medical college, and nationally recognized programs in nine other colleges and schools.

Information: 215.895.2000 or visit [www.drexel.edu](http://www.drexel.edu).

## The Restaurant School at Walnut Hill College

For over 25 years, The Restaurant School at Walnut Hill College has received national acclaim for its innovative approach to education. With an incredible graduate success rate, four majors in Culinary Arts, Hotel Management, Pastry Arts, and Restaurant Management afford students an incredible placement rate of 96%. Graduates enter the culinary and hospitality management fields in supervisory level positions.

4207 Walnut St. Info: 877.925.6884 or visit [www.walnuthillcollege.edu](http://www.walnuthillcollege.edu).

## University of Pennsylvania

Recognized as America's first university, Penn remains today a world-renowned center for the creation and dissemination of knowledge. It serves as a model for research colleges and universities throughout the world. The 269-acre, urban campus boasts many notable landmarks. These include Houston Hall, the nation's first student union; the University of Pennsylvania Museum of Archaeology and Anthropology, one of the finest museums of its kind in the country; Franklin Field, the oldest collegiate football field still in use and the country's first double-decked college stadium; plus buildings by noted architects Frank Furness, Louis Kahn, Eero Saarinen, Robert Venturi and Denise Scott Brown.

Information: 215.898.5000 or visit [www.upenn.edu](http://www.upenn.edu).

## University of the Sciences in Philadelphia

For nearly two centuries, University of the Sciences in Philadelphia (USP) has held a distinguished reputation of educating students for successful and rewarding careers in the thriving pharmaceutical, science, and health care industries. Founded in 1821 as Philadelphia College of Pharmacy, the first college of pharmacy in North America, USP is where the founders of six of the top 10 pharmaceutical companies in the world launched their futures.

600 South 43rd St. Info: 215.596.8800 or visit [www.usip.edu](http://www.usip.edu).

# Map Key

## Cuisine

- 1 12 Lounge (2B)
- 2 2 Goodfellas (2B)
- 3 Abbraccio Restaurant (3A)
- 4 Abyssinia Restaurant & Bar (2B)
- 5 Beijing Restaurant (2C)
- 6 Ben & Jerry's (2B)
- 7 Blue Nile Cafe (3A)
- 8 Bubble House (inset)
- 9 Café Clave (2B)
- 10 Cavanaugh's Restaurant (2C)
- 11 Chili's Grill & Bar (2C)
- 12 Copabanana (2B)
- 13 Cosi Sandwich & Coffee Bar (inset)
- 14 Dahlak Restaurant (3A)
- 15 Ecco Qui (2D)
- 16 Fatou & Fama (2B)
- 17 Firehouse Farmers Market (2A)
- 18 Freshgrocer (2B)
- 19 Gia Pronto (2C)
- 20 Genuine Baking Co. (3A)
- 21 Gojjo Restaurant/Bar (3A)
- 22 Green Line Café (3B)
- 23 Han Wool (inset)
- 24 Intermezzo Café & Lounge (2D)
- 25 Izzy & Zoe's (2B)
- 26 Kabobeesh Restaurant (2B)
- 27 Kabob Palace (2B)
- 28 Koch's Deli (2B)
- 29 La Terrasse (inset)
- 30 Lee's Hoagie House (2B)
- 31 Lemon Grass Thai Restaurant (1C)
- 32 Lou's Mexican Restaurant (1C)
- 33 Mad 4 Mex (inset)
- 34 Metropolitan Bakery & Café (2B)
- 35 Mill Creek Tavern (3B)
- 36 Mokas Greek Restaurant (1C)
- 37 Nan Modern Food (2B)
- 38 Nara Restaurant (2B)
- 39 New Deck Tavern (inset)
- 40 New Delhi Restaurant (2B)
- 41 O'Hara's Fish House (2C)
- 42 Paris Café 41 (2B)
- 43 Pattaya Grill (2B)
- 44 Penne Restaurant & Wine Bar (inset)
- 45 Philly Diner (2B)
- 46 Pho & Café Saigon
- 47 Picnic at The Left Bank (2D)
- 48 Pizza Rustica (inset)
- 49 Pod (inset)
- 50 Rana Middle East Cuisine (1C)
- 51 The Restaurant School (2B)
- 52 Rx (2B)
- 53 Sitar India Restaurant (2C)
- 54 Smokey Joe's Tavern (2B)
- 55 Sugar Hill Bakery & Café (3A)
- 56 Tandoor India Restaurant (2B)
- 57 Thai Singha House (2B)
- 58 Top Dog (inset)
- 59 Vientiane (3A)
- 60 White Dog Cafe (inset)
- 61 Won Oriental Restaurant (2B)
- 62 Zócalo (1C)
  
- 64 Shops at 30th Street Station (2D)
- 65 Houston Market (2C)
- 66 Moravian Cafés (inset)
- 67 The Food Trucks (2C)

## Culture

- 68 Addams Gallery (inset)
- 69 Annenberg Center (inset)
- 70 Arch. Archives/Kroiz Gallery (inset)
- 71 Arthur Ross Gallery (inset)
- 72 Maurice S. Burrison Gallery (inset)
- 73 Calvary Ctr. for Comm. & Culture (3A)
- 74 Community Education Center (1C)
- 75 East Africa Resource Center (1C)
- 76 Ellen P. Tiberino Museum (1C)
- 77 Esther M. Klein Gallery (inset)
- 78 Foundation Comm. Arts Initiative (2B)
- 79 Gwendolyn Bye Dance Center (1C)
- 80 Inst. of Contemporary Art (inset)
- 81 International House (inset)
- 82 Irvine Auditorium (2C)
- 83 Kelly Writer's House (2C)
- 84 Leonard Pearlstein Gallery (2D)
- 85 Living Loft Puppet Museum(1D)
- 86 Marvin Samson Center (3B)
- 87 Meyerson Gallery (inset)
- 88 Peck Center Gallery (2D)
- 89 Paul Robeson Museum (2A)
- 90 PhilaDanco (2B)
- 91 Philadelphia Boys Choir (1D)
- 92 Philadelphia Cathedral (2C)
- 93 Slought Foundation (2B)
- 94 Squirrel Hill Falls Ampitheater (3A)
- 95 University City Arts League (2B)
- 96 Univ. of Penn Museum (2C)
- 97 Westphal Picture Gallery (2D)
- 98 The Woodlands (3B-C)
- 99 World Café (2D)

## Lodging

- 100 Carriage House Bed & Breakfast (3A)
- 101 Cornerstone Bed & Breakfast (1C)
- 102 Divine Tracy Hotel (inset)
- 103 The Gables Bed & Breakfast (3B)
- 104 Hilton Inn at Penn (inset)
- 105 Sheraton University City (inset)

## Colleges & Universities

- 106 Community College of Phila.  
—West Regional Ctr. (2A)
- 107 The Restaurant School  
at Walnut Hill College (2B)
- 108 Drexel University (2D)
- 109 University of Pennsylvania (2C)
- 110 University of the Sciences  
in Philadelphia (3B)

## Shopping Areas

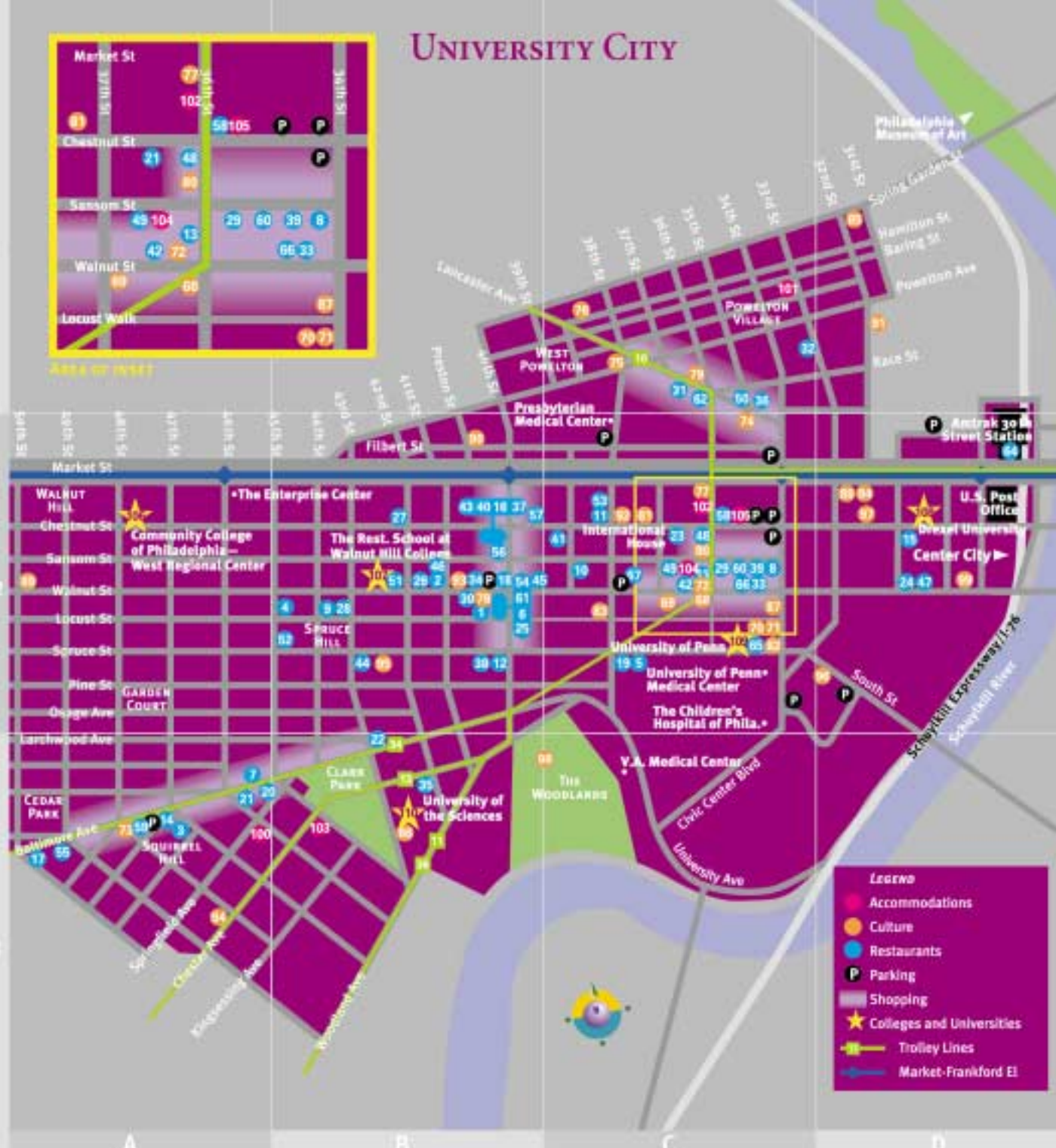
- 40th Street (2B)
- Baltimore Avenue (3A)
- Lancaster Avenue (1C)
- University Square (2C, inset)

# UNIVERSITY CITY



Area of inset

1  
2  
3



A B C D

UCD & Penn Division of Public Safety Services:  
Walking Escort, Vehicle Lock-Out & Jump Start Assistance  
call 215-898-WALK (9255), 24 hours/day, 7 days/week

Guide Layout/Design/Editing: Todd Powers  
Art Direction & Editor: Lori Klein Brennan  
Map Design: Joel Katz design associates  
Last updated: January, 2004

# University City District

University City District builds effective partnerships to maintain a clean and safe environment and to promote, plan, and advocate for University City's diverse, urban community.

*100% of the funding for University City District's programs and services comes from voluntary contributions by businesses, institutions, and individuals.*

## Programs

### Clean & Safe

UCD's Public Space Maintenance staff are dedicated to making University City a clean and well-maintained neighborhood. Crews sweep and mechanically vacuum sidewalks on 160 commercial and residential blocks, as well as remove graffiti, scrape stickers and posters from public fixtures, water street trees, and clean vacant lots.



UCD's Ambassadors patrol University City's streets on foot, bicycle, and in-line skates every day from 11 am to 3 am. They serve as additional "eyes and ears" for improved public safety,

provide free vehicular lockout and jump start service, give directions and walking escorts, and can assist with emergencies. The Homeless Outreach team reduces panhandling and helps those living on the street to locate services. Phone: 215-898-WALK

### Neighborhood Initiatives

Facilitating the preservation, rehabilitation, and maintenance of residential and commercial properties and improvement of public spaces are key to improving the quality of life in University City. Staff provide workshops and technical assistance for homeowners, landlords, and small businesses and work with neighborhood commercial corridors to promote a healthy business environment.

### Marketing & Communications

Through marketing events, a website, publications, advertising, and collaborative partnerships, UCD promotes University City as an exciting place to live, work, and spend leisure time. UCD's professional design staff plan and manage a variety of projects that enhance University City's commercial corridors and historic residential neighborhoods.



3940 Chestnut Street  
Phila., PA 19104  
Tel. 215-243-0555  
Fax 215-243-0557

[www.UCityPhila.org](http://www.UCityPhila.org)

The Bridge Cinema de Lux at 40th & Walnut streets.



Tommy Leonard

University City District Operations Center at 40th & Chestnut streets.



The historic Woodlands mansion & cemetery at 40th & Woodland Avenue.



Jim Abbott

