

rittenhouse  
222



## rittenhouse 222      grand club

### **business conference center**

large private work stations  
with state-of-the-art high speed  
multimedia computer stations

modem communications  
for e-mail and internet access

video and conference room  
with complete presentation equipment

laser printing facility

fax and copy machines

### **fitness center**

cardio-theater with three televisions  
and stereo system

state-of-the-art fitness multi-station

full complement of chrome dumbbells

computerized life cycles

stair masters

treadmills, esx

mirrored wall exercise room  
with stretching bar

### **additional services**

24 hour concierge services

mail drop off and package acceptance

valet dry cleaning service

planned social events: wine tastings,  
seminars,

monthly resident receptions

### **maintenance service**

full-time on-site management,  
maintenance, landscaping and  
housekeeping services

emergency maintenance requests  
performed  
within 24 hours

maintenance call-back program

### **office hours**

monday through friday 8 am – 6 pm

saturday 9 am – 5 pm

sunday 12 pm – 5 pm

### **information**

toll free 877.korman.2

local 215.222.park

fax 215.222.4450

email 222@korman1.com

**kormancommunities.com**

## rittenhouse 222 corporate suites

### **corporate suites**

select mahogany furniture package  
luxury wall to wall carpet  
custom designed mahogany blinds  
on all windows  
upgraded kitchen accessories  
bath and bed linens  
fully equipped kitchen  
radio/alarm clock  
25 inch color tv with vcr and premium  
cable  
dual phone lines  
state-of-the-art security system  
free local calls and discounted long  
distance  
iron and ironing board  
weekly maid service  
all utilities included  
direct company billing  
major credit cards accepted  
individually controlled energy efficient  
heating and air conditioning system  
fire sprinkler  
hard-wired smoke detector  
walk-in utility room  
with full sized washer and dryer  
in all 2 bedroom / 2 bath  
professionally managed  
by Korman Communities,  
the furnished suite leader

### **gourmet kitchens**

marble tile floor  
microwave  
disposal  
coffee maker  
dishwasher

### **fabulous bathrooms**

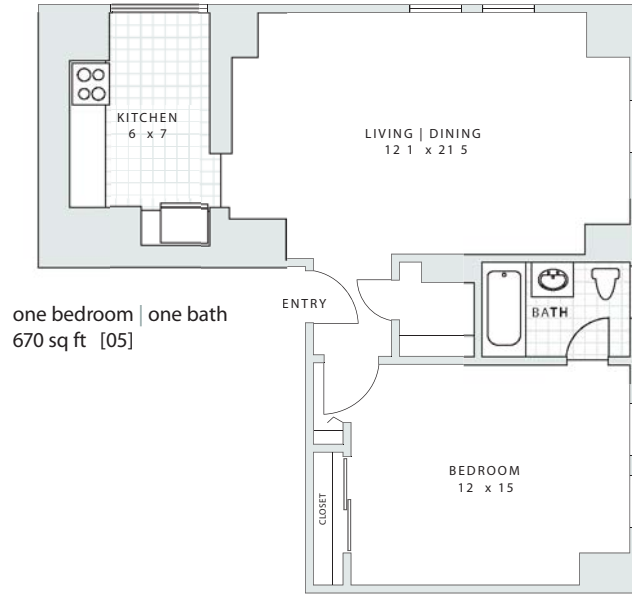
pedestal sinks  
medicine cabinets  
hollywood lighting  
ceramic tile bath/shower

### **ample storage**

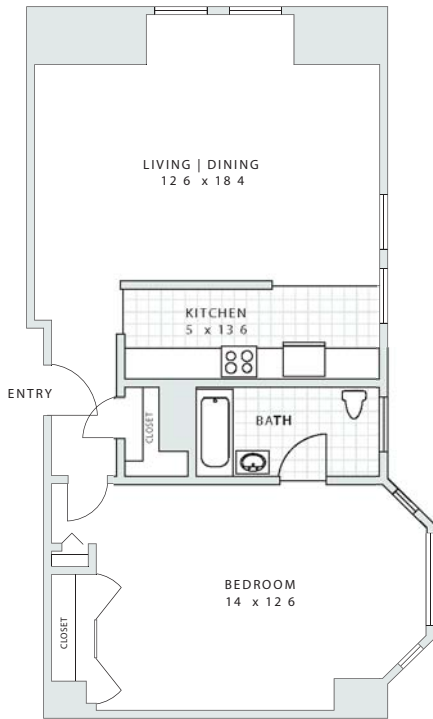
coat, linen and storage closets  
walk-in closets

rittenhouse 222  
one bedroom one bath

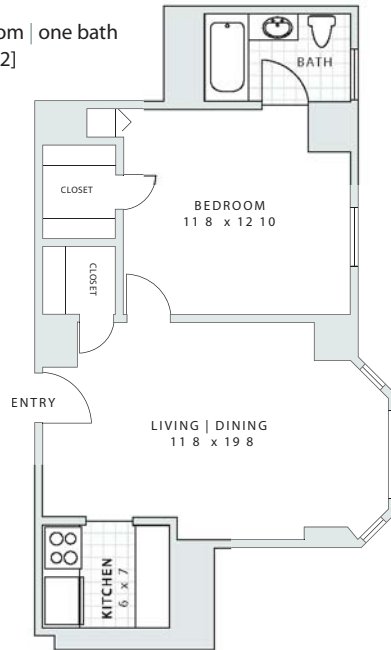
suite:  
rate:



one bedroom | one bath  
616 sq ft [08]

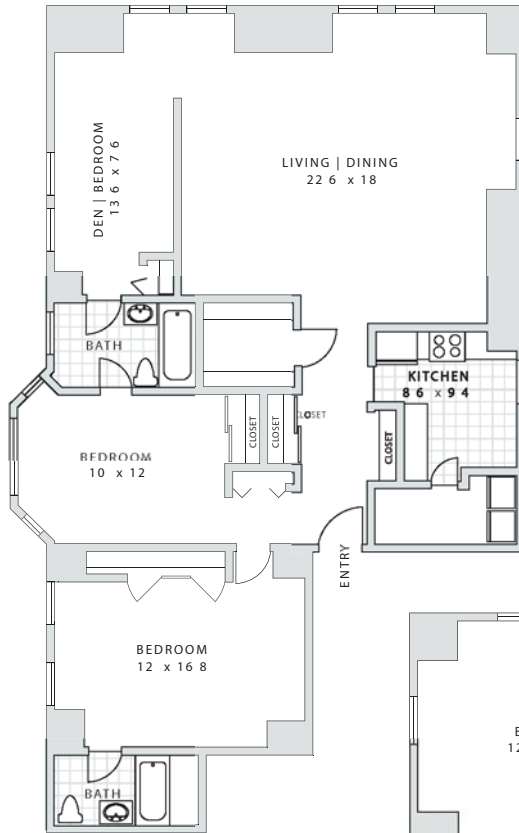


one bedroom | one bath  
560 sq ft [02]

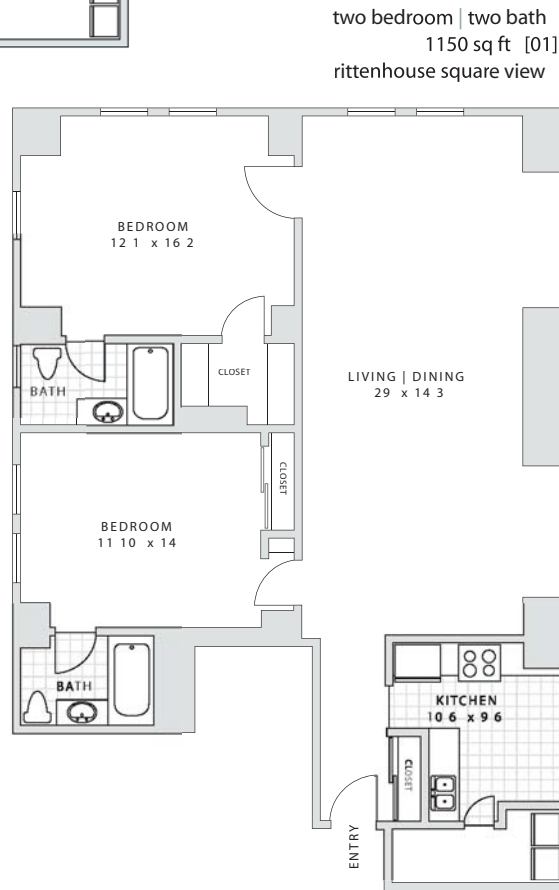


rittenhouse 222  
two bedroom two bath

suite:  
rate:



two bedroom | two bath | den  
1350 sq ft [06]  
rittenhouse square view



two bedroom | two bath  
1150 sq ft [01]  
rittenhouse square view

rittenhouse 222 rates

**suites**  
monthly

**studio**  
77. day

**one bedroom, one bath**

97. - 107. day

**two bedroom, two bath**

140. - 150. day

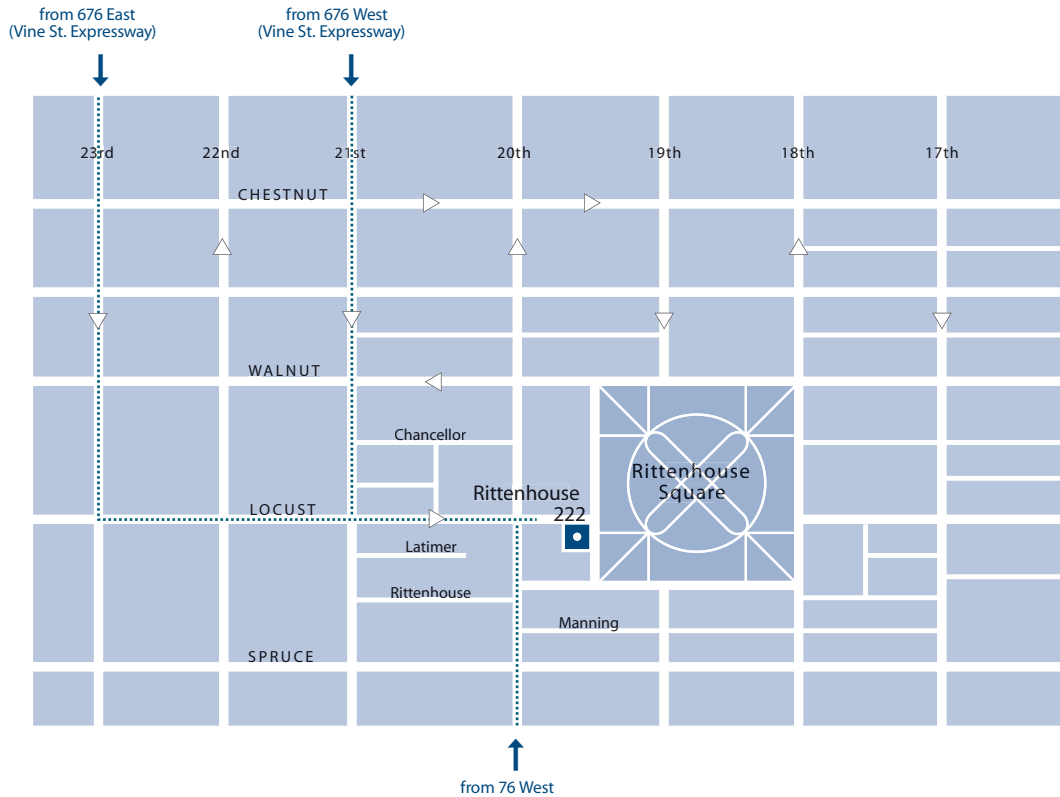
**penthouse**

234. day

based on a 30 day minimum stay

**877.korman.2**

222 rittenhouse square, philadelphia, pa  
19103



rittenhouse 222 222 W. Rittenhouse Square, Philadelphia, PA 19103

**From 676 West (Vine Street Expressway):** take Benjamin Franklin Parkway exit. Turn right onto 21st Street. Continue south to Locust Street. Make left and proceed two blocks to Rittenhouse 222.

**From 676 East (Vine Street Expressway):** take 23rd Street exit. Follow 23rd Street south to Locust Street. Make left and proceed four blocks to Rittenhouse 222.

**From 76 West:** take South Street exit. Proceed to traffic light and turn right onto South Street. Continue east to 20th Street. Make left and continue north to Locust Street. Make a right on Locust and proceed one block to Rittenhouse 222.

korman communities

kormancommunities.com