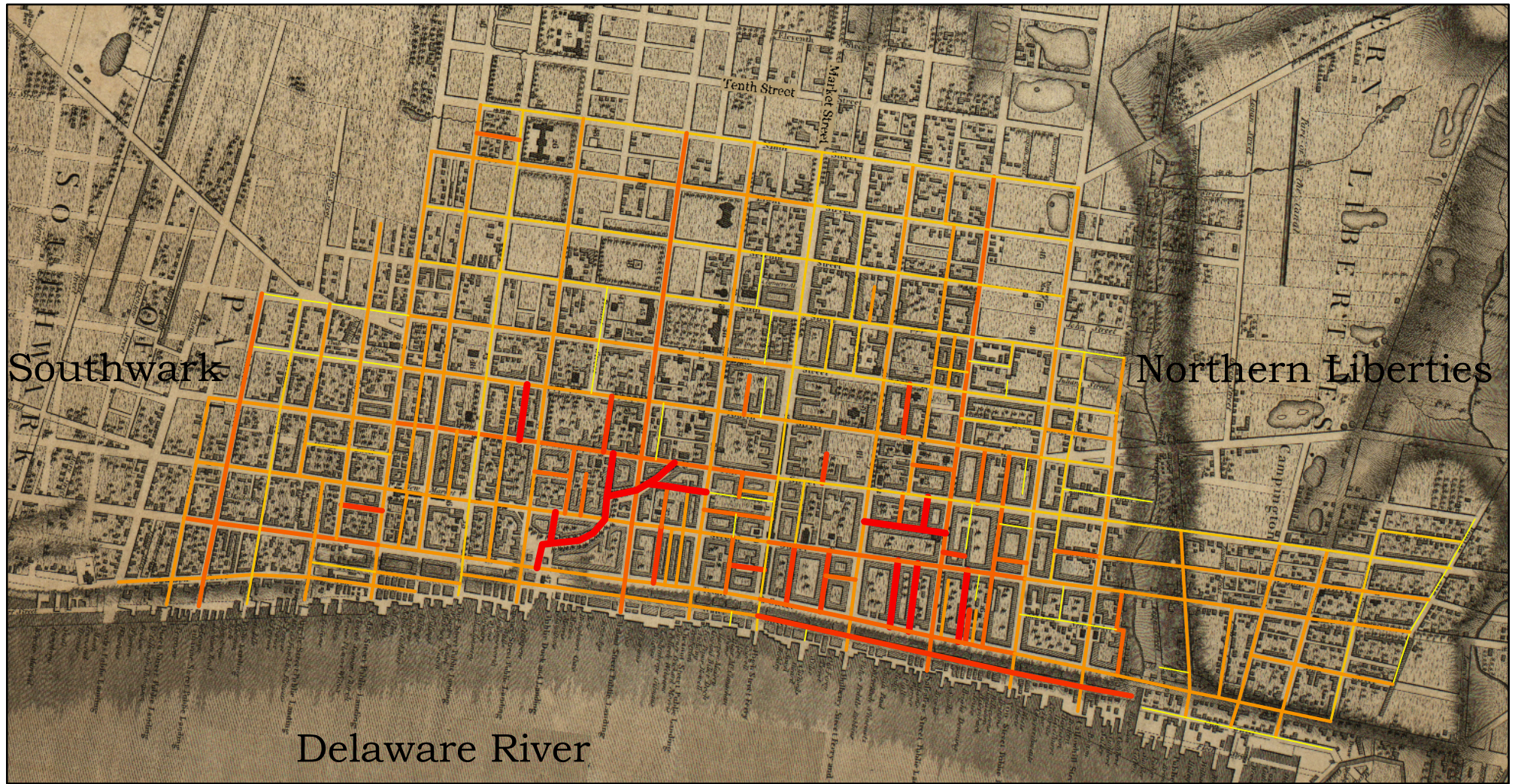
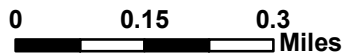
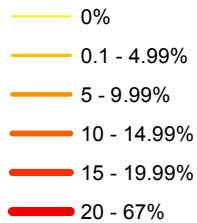


# Yellow Fever Deaths 1793



## Deaths From Yellow Fever by Street



Principal Investigator: Dr. Billy Smith, Montana State University Dept. of History and Philosophy, [bgs@montana.edu](mailto:bgs@montana.edu)

Background map created by John Hills, 1797, Wheat and Brun no. 468, Library of Congress

Structure and people data from the 1791 city directory, 1790 federal census, and the 1789 state tax list

Data assembled and analyzed by Dr. Billy Smith and Paul Sivitz, Montana State University Dept. of History and Philosophy, Tara Chesley-Preston, Alex Schwab, and Stuart Challenger, Montana State University Dept. of Earth Sciences