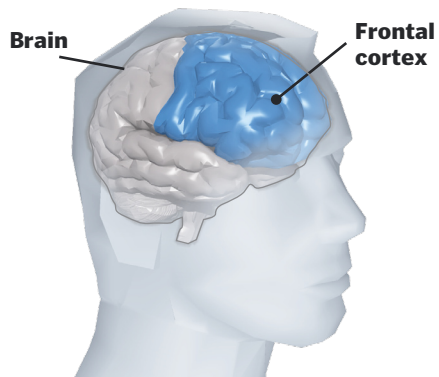


A LOOK INSIDE

The Center for the Study of Traumatic Encephalopathy at the Boston University School of Medicine is studying Chronic Traumatic Encephalopathy (CTE), a brain abnormality that is believed to occur from years of repetitive head trauma. CTE leaves sufferers susceptible to memory impairment, emotional instability, erratic behavior and problems with impulse control.



61-year-old control patient

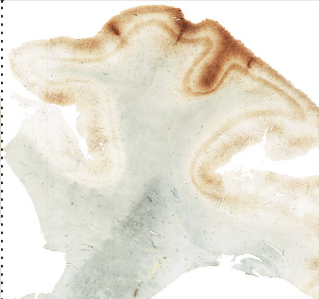


Sections of brain's frontal cortex stained for tau protein without magnification. The presence of tau protein is the precursor of CTE.

John Grimsley, a former Houston Oilers linebacker who accidentally shot himself at age 45



Tom McHale, a former Eagles lineman who died of a drug overdose at age 45



73-year-old boxer



Microscopic views of the cortex showing many brown-staining neurons containing abnormal tau protein.

