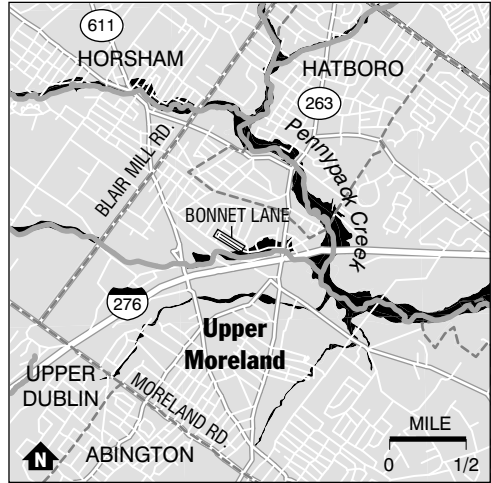


Flood-Prone Areas in the Region

The **areas in solid black** on these maps identify flood-prone neighborhoods in the Philadelphia region. They are part of a 100,000-chart inventory prepared by the Federal Emergency Management Agency to guide Americans on home buying, building and insuring. Last week, Congress approved a \$150 million appropriation to update the maps, many of which are outdated by development. The project is expected to take about a decade to complete and cost nearly \$1 billion. The maps are available to the public at www.fema.gov.



Upper Moreland

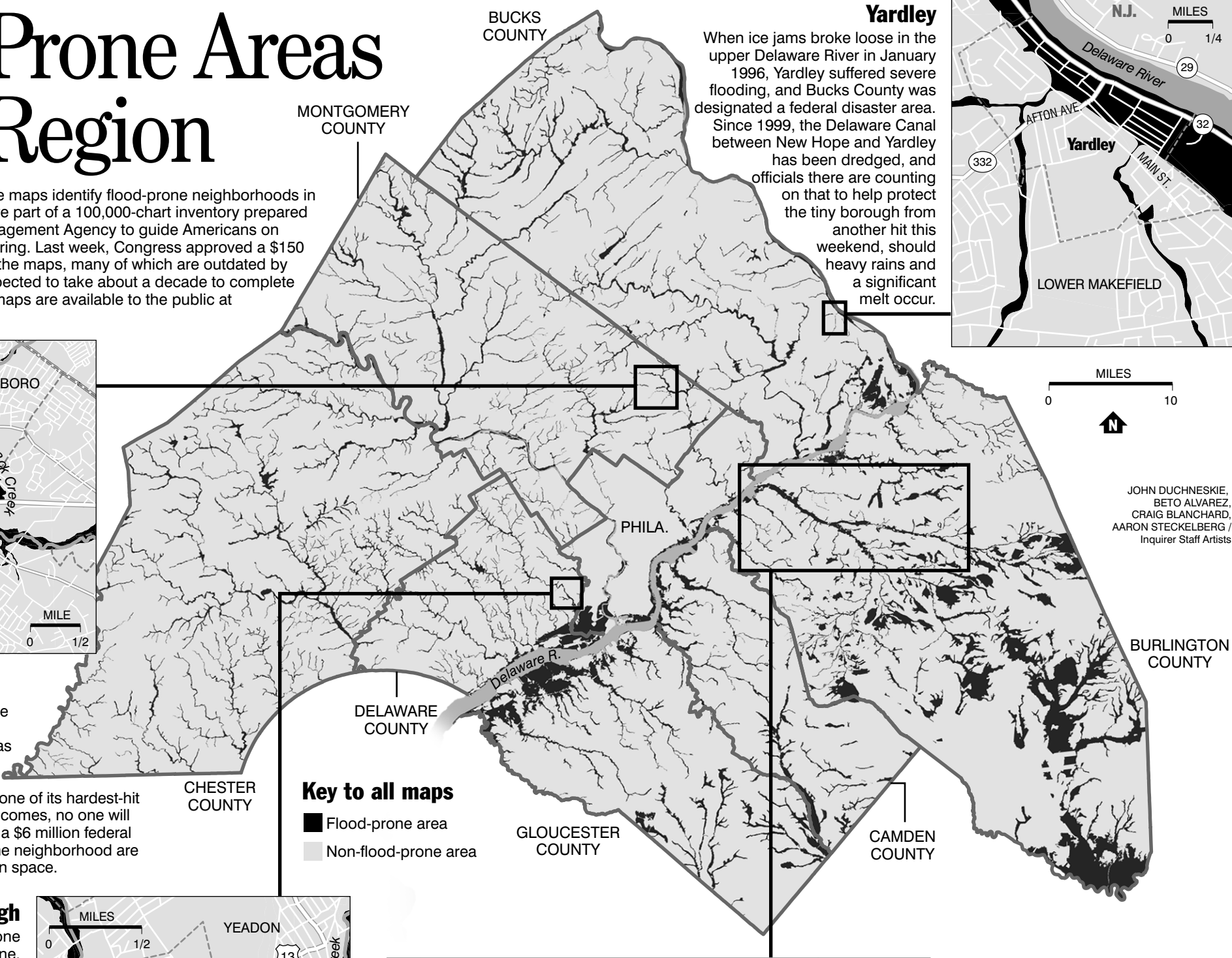
As development has forced more storm runoff into the Pennypack and Mill Creeks, the township has become one of Montgomery County's most flood-prone communities, and Bonnet Lane one of its hardest-hit streets. But when the next flood comes, no one will be in harm's way. This winter, in a \$6 million federal buyout program, 32 homes in the neighborhood are being demolished, creating open space.

Darby Borough

Darby Creek has long been one of the region's most flood-prone. Some experts believe that the problems in Darby Borough have been exacerbated by upstream development. Darby Borough has suffered through numerous major floods, including a devastating one during a January 1994 rainstorm. The most recent disaster was Hurricane Floyd, after which 43 homes were demolished.



SOURCES: Federal Emergency Management Agency; ESRI

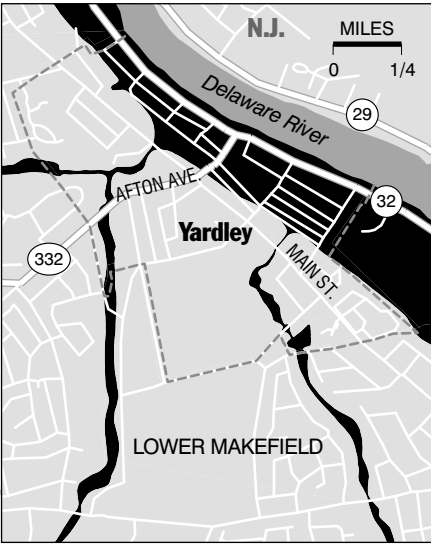


Key to all maps

- Flood-prone area
- Non-flood-prone area

Yardley

When ice jams broke loose in the upper Delaware River in January 1996, Yardley suffered severe flooding, and Bucks County was designated a federal disaster area. Since 1999, the Delaware Canal between New Hope and Yardley has been dredged, and officials there are counting on that to help protect the tiny borough from another hit this weekend, should heavy rains and a significant melt occur.



Rancocas Creek

When lakes in Pemberton Township fill up and water is released into the Rancocas, the Burlington County communities of Delran, Riverside and Willingboro are at high risk for flooding. To head off that possibility this weekend, floodgates are being opened at the dam in Mount Holly to lower the water level in the Rancocas, which empties into the Delaware River. Four half-gates were opened Wednesday and a full gate was expected to be opened by today.

