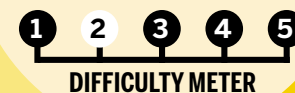


USE A COLOR WHEEL

To draw whatever you like in warm or cool colors



DIFFICULTY METER

Kids:
Steal these tips from a professional artist



Art Thief

What you need

Pencil, eraser, and markers or watercolors

by AMY RAUDENBUSH • art@phillynews.com



The Starry Night by Vincent van Gogh

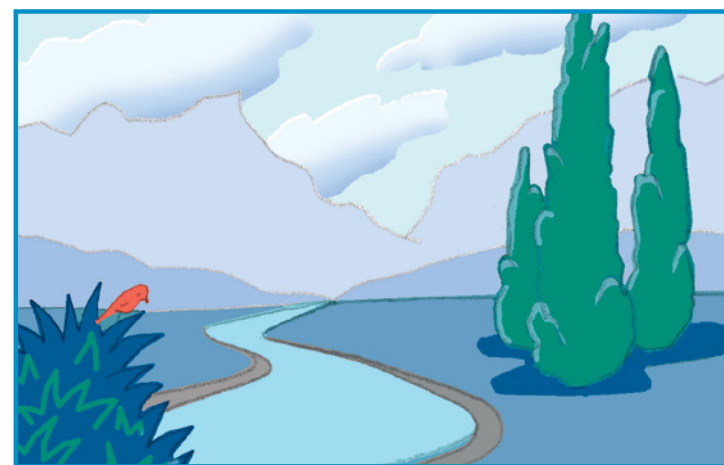


Flint Castle by William Turner

Creating mood with color

Look at the two landscapes above. Does *The Starry Night* by Vincent van Gogh make you feel warm or cool? Does *Flint Castle* by William Turner make you feel warm or cool?

These two famous paintings are alike in one way. Each has a distinct color temperature. *The Starry Night* is a very cool, blue painting with small accents of warm yellow. *Flint Castle* is a very warm, yellow painting with small accents of cool blue-violet.



Your assignment

1 Here are two landscapes that share the same composition. Can you say which has warm colors and which has cool colors? Have you noticed the little bird is warm in the cool picture and cool in the warm picture?

Your assignment is to draw anything you like in either warm or cool colors. You can draw from observation or your imagination,

or use the landscape shown here. When choosing your colors, don't strive for literal accuracy. Instead, try to make the colors give you a certain feeling. Maybe your trees are purple and your stream is green. It's up to you.

To finish, color a small object or area with a color from the opposite side of the color wheel.

Next week's heist: We study Michelangelo's "David" and learn about *contrapposto*.