

Kids:
Steal these
tips from a
professional
artist



Art Thief

Heist #1

DRAW THE ART THIEF

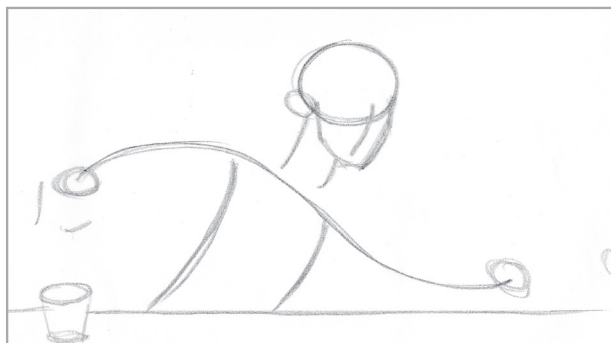
1 2 3 4 5
DIFFICULTY METER

by AMY RAUDENBUSH • art@phillynews.com

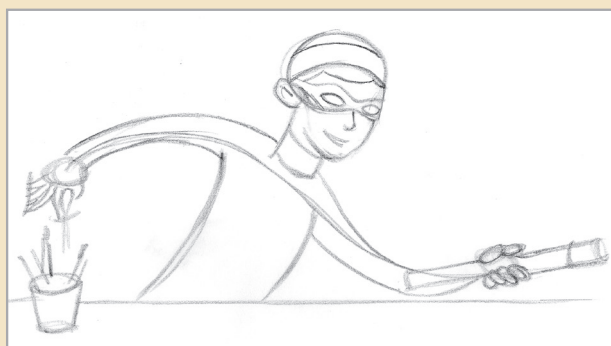
What you need

Pencil, eraser, felt-tip,
ruler or other straight edge.

1 In pencil, start with the curve that will become the arms. Add the torso lines and the circle that will become the head. Notice that the head is a bit forward (right) of the torso. Curved lines instead of straight bring action to your figure drawings. Finish roughing in the head, hand buds and table. Add a vertical guideline for the center of the face.



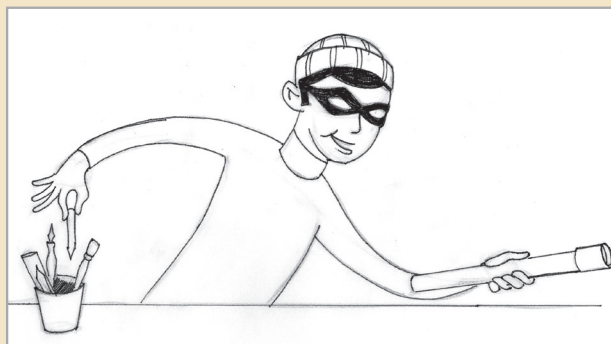
2 Begin fleshing out your thief. Use your center guideline when placing the eyes, nose and mouth. Notice the roundness of the turtleneck and cap. Add the flashlight through the hand bud. Now draw the thumb and fingers on the flashlight and put some art supplies in the pot.



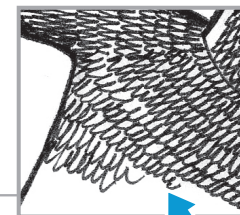
3 Continue to refine your drawing in pencil. Erase the guidelines that are no longer needed. Notice that the eye closest to the viewer is slightly larger than the other. Also notice that the bottom lip gets a second line.



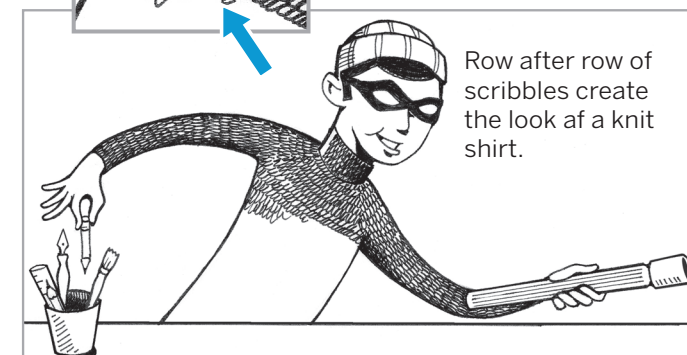
4 Partially erase your heaviest pencil lines. You are now ready to begin inking your drawing with a felt tip. Once you have blackened the hair and mask and outlined your figure, you must wait a minute for your ink to dry before erasing all of your pencil lines. Kneaded or gum erasers work best, but a pencil-top one will do.



5 For best results, don't stop inking after your basic outline. Add shadows under the nose, bottom lip and chin. Beef up your lines, especially areas where lines meet such as the corner of the mouth and between the fingers.



Row after row of scribbles create the look of a knit shirt.



The inside of the pot is in shadow.



You have completed the art thief!



Next week's heist:
Foreshortening. We draw an action figure.